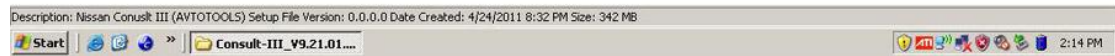
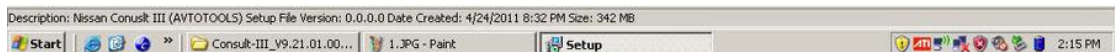
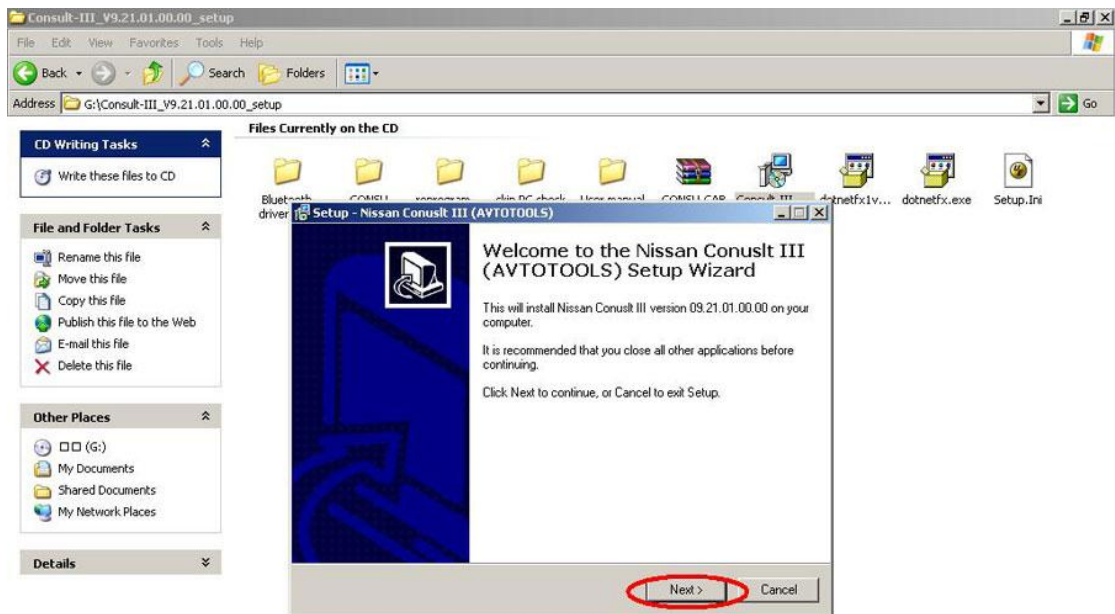


Nissan Consult 3 III Setup Instruction

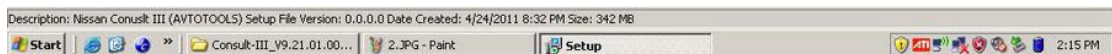
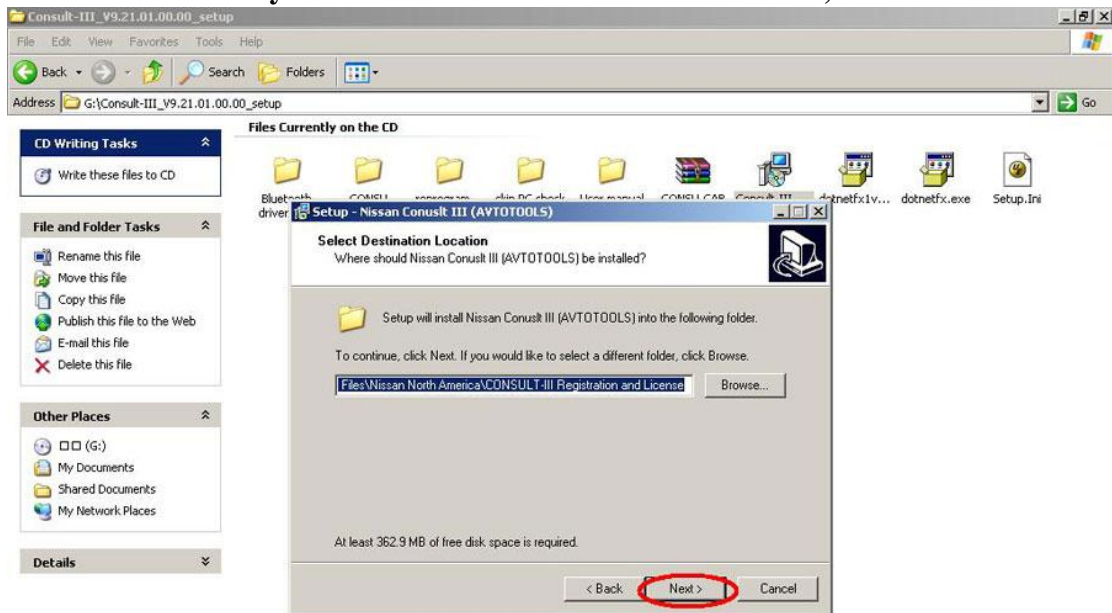
1) Open Consult III CD, click "consult iii setup.exe".



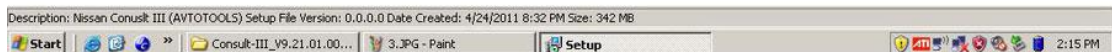
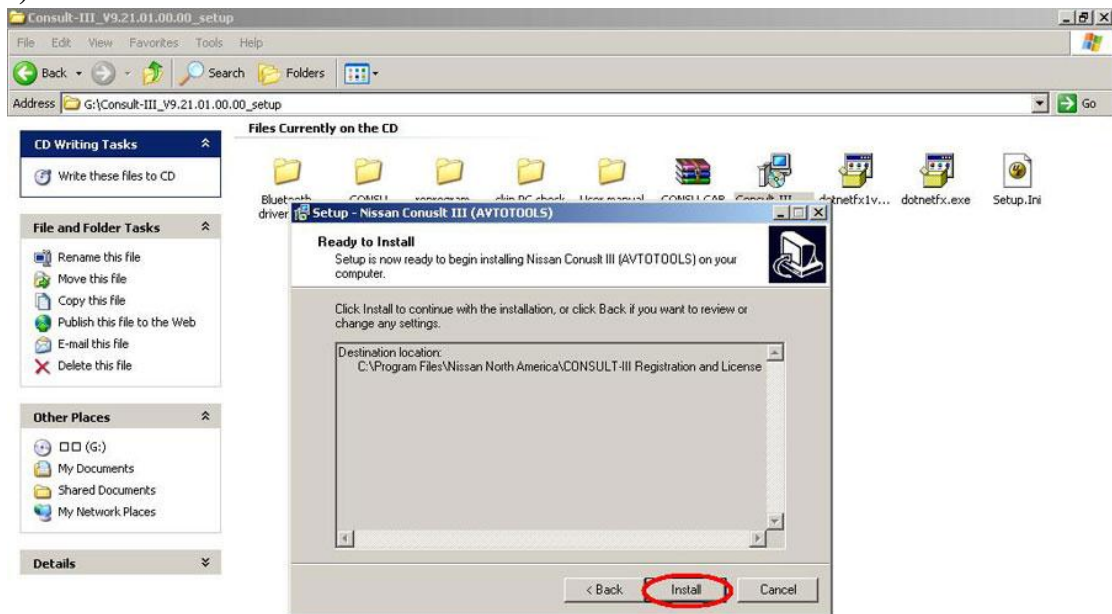
2) Click "Next".



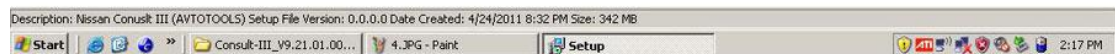
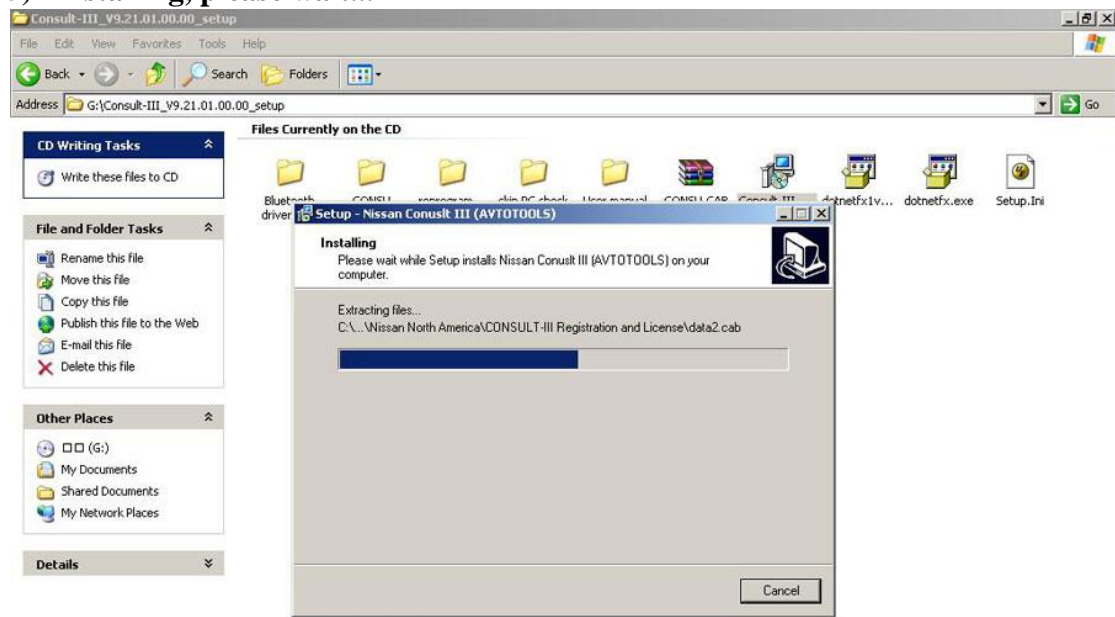
3) Setup will install Nissan Consult III into the following folder. To continue, click "Next". If you would like to select a different folder, click Browse.



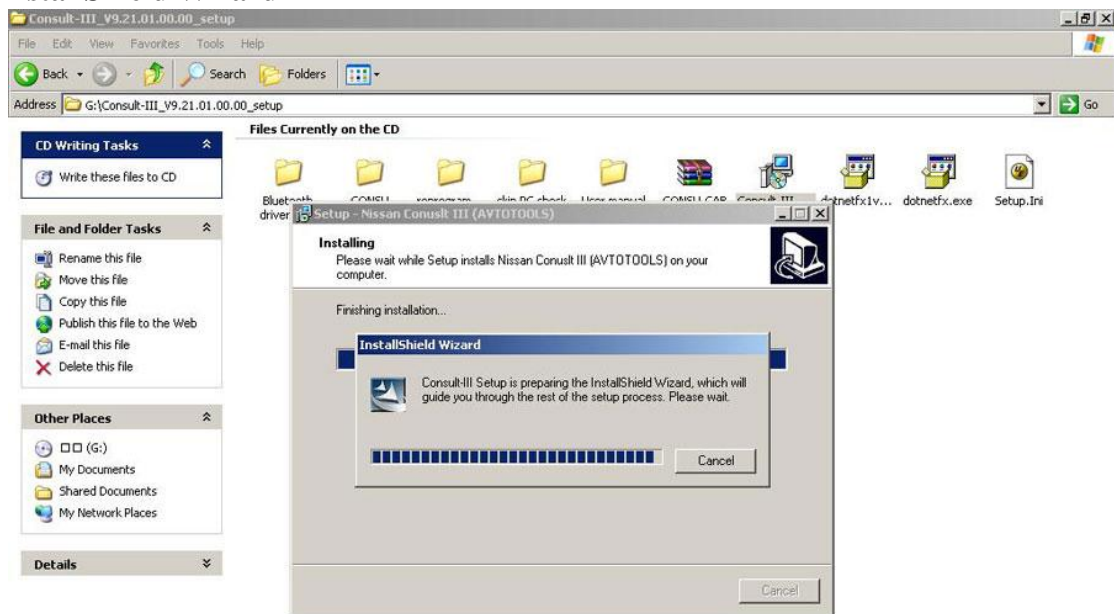
4) Click "Install".



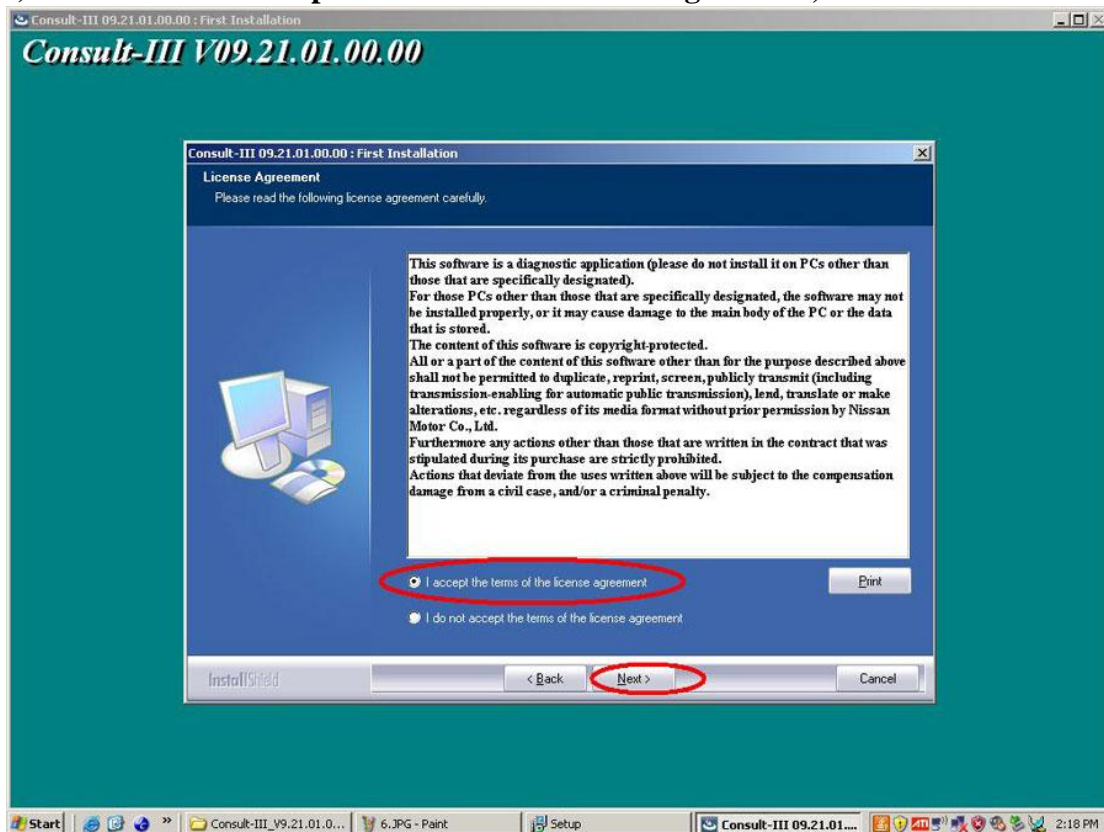
5) Installing, please wait...



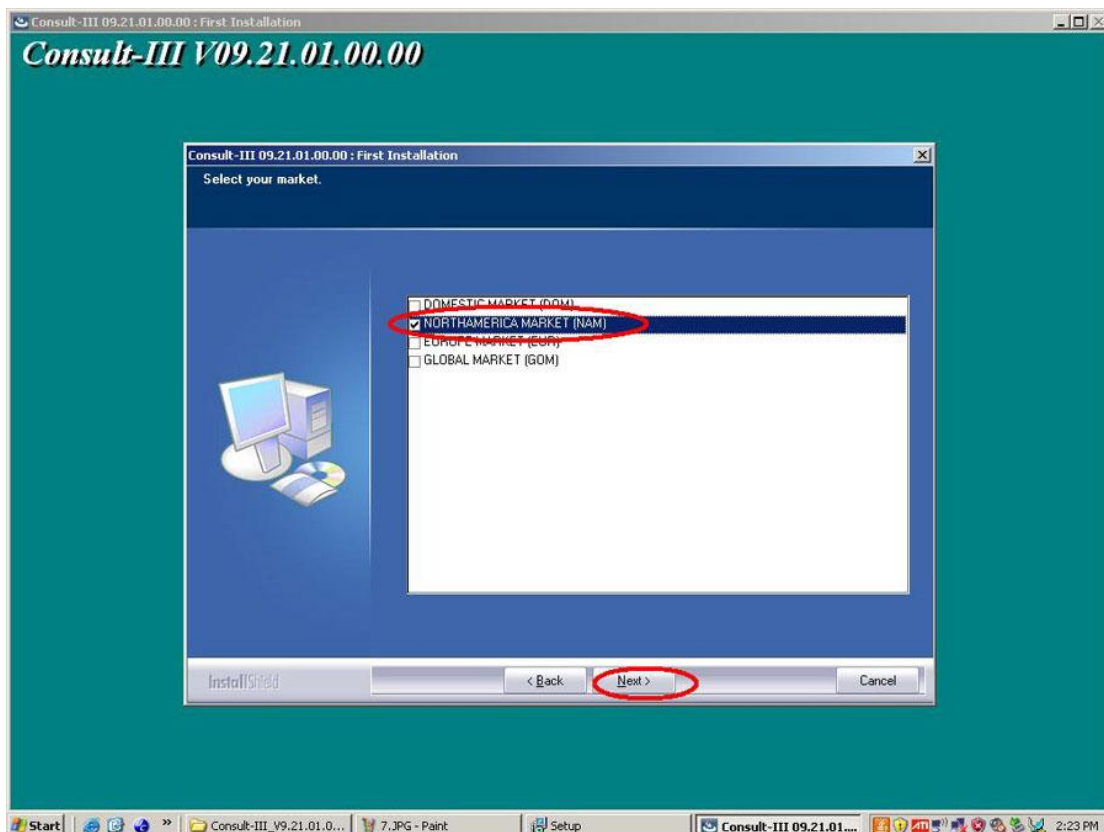
6) InstallShield Wizard



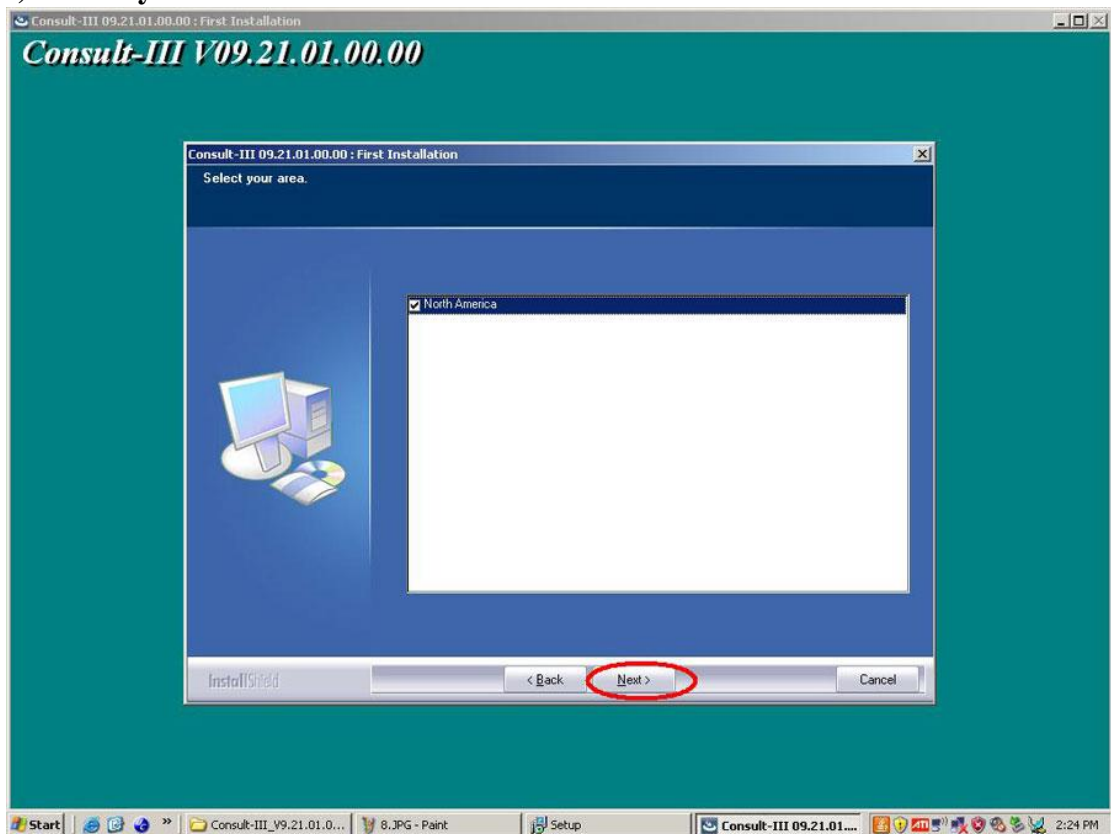
7) Tick before "I accept the terms of the license agreement, then click "Next".



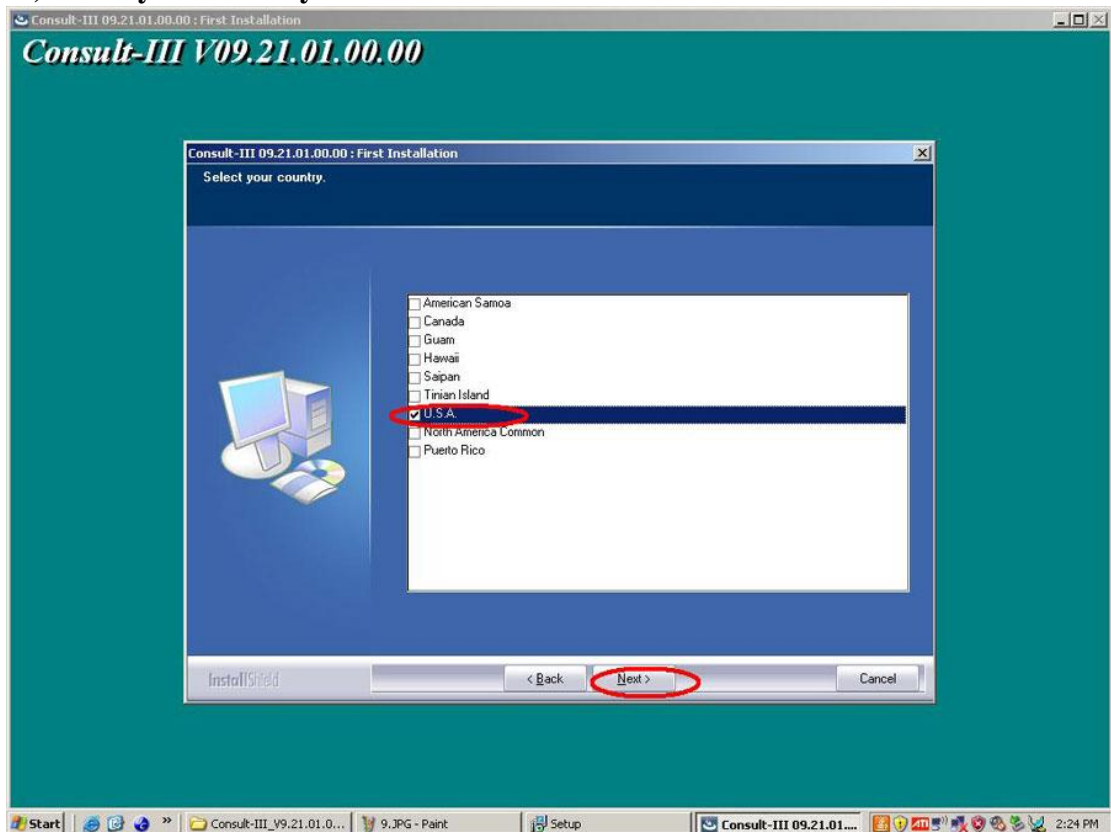
8) Select your market, it is available with Domestic market (DOM), North America Market (NAM), Europe Market (EUR) and Global Market(GOM), then click "Next".



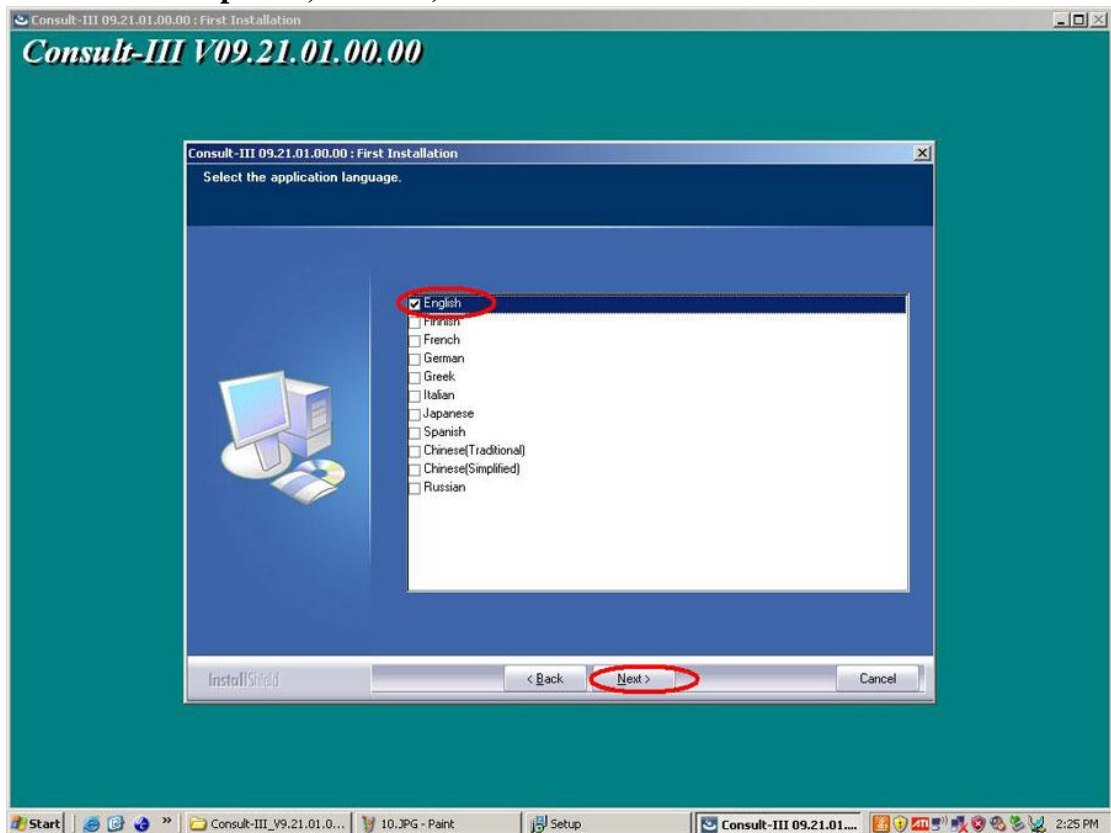
9) Select your area.



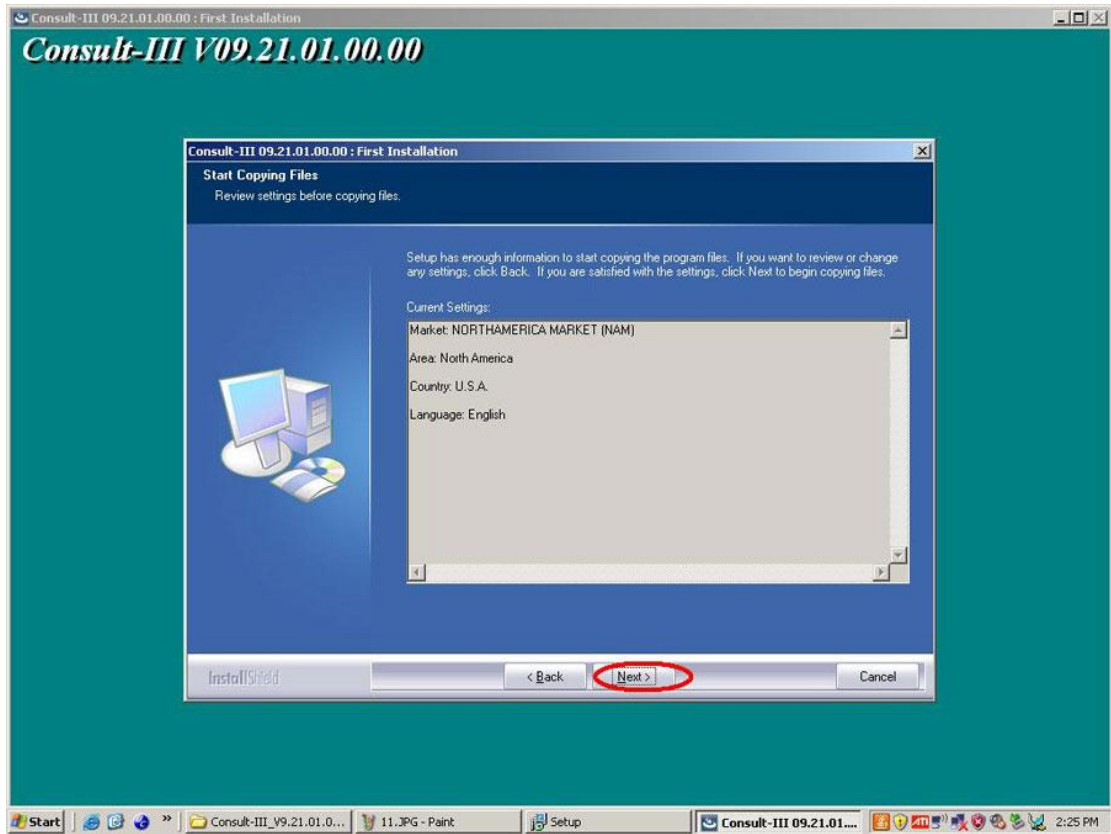
10) Select your country



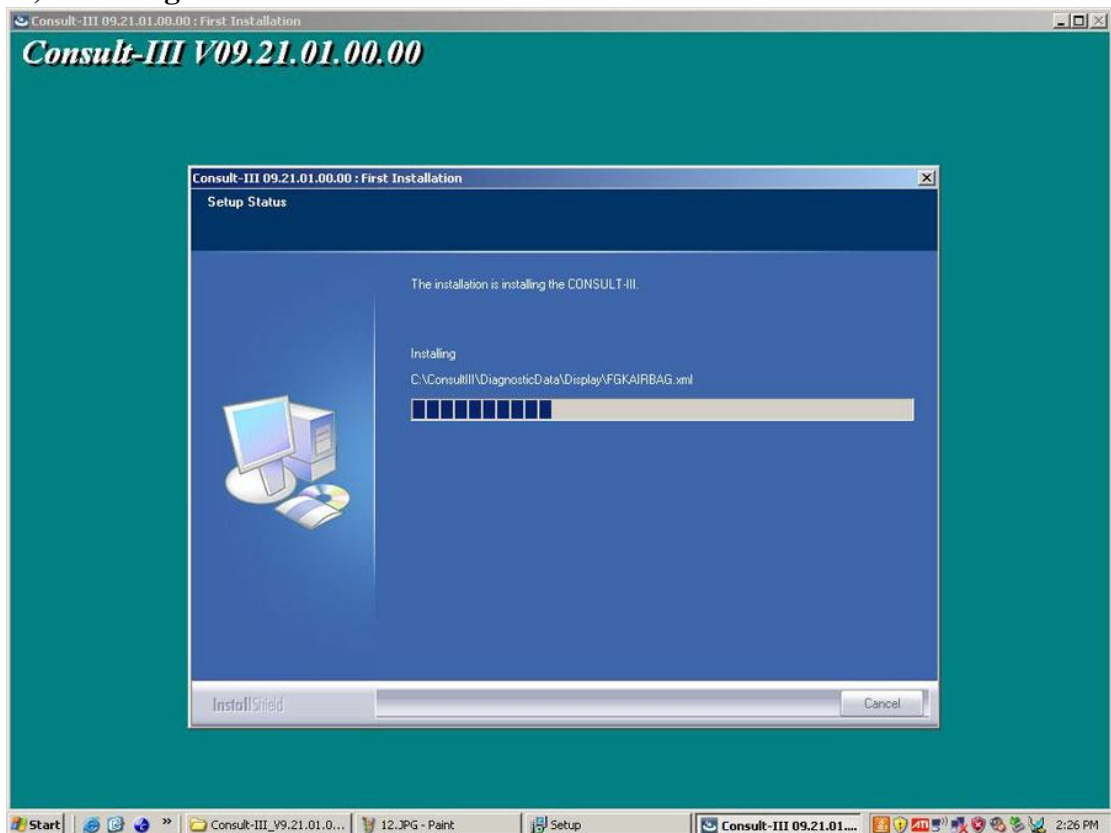
11) Select the application language (Language available with: English, Finnish, French, German, Greek, Italian, Japanese, Spanish, Chinese traditional, Chinese Simplified, Russian)



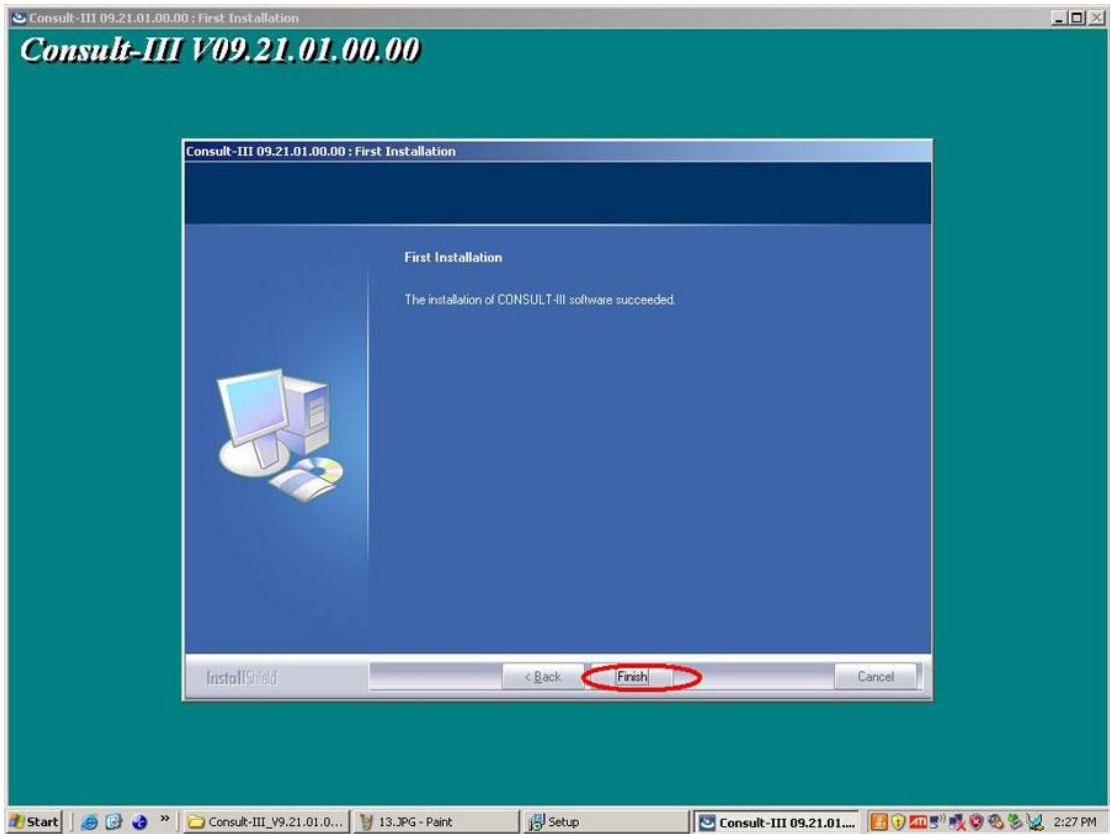
12) Click Next



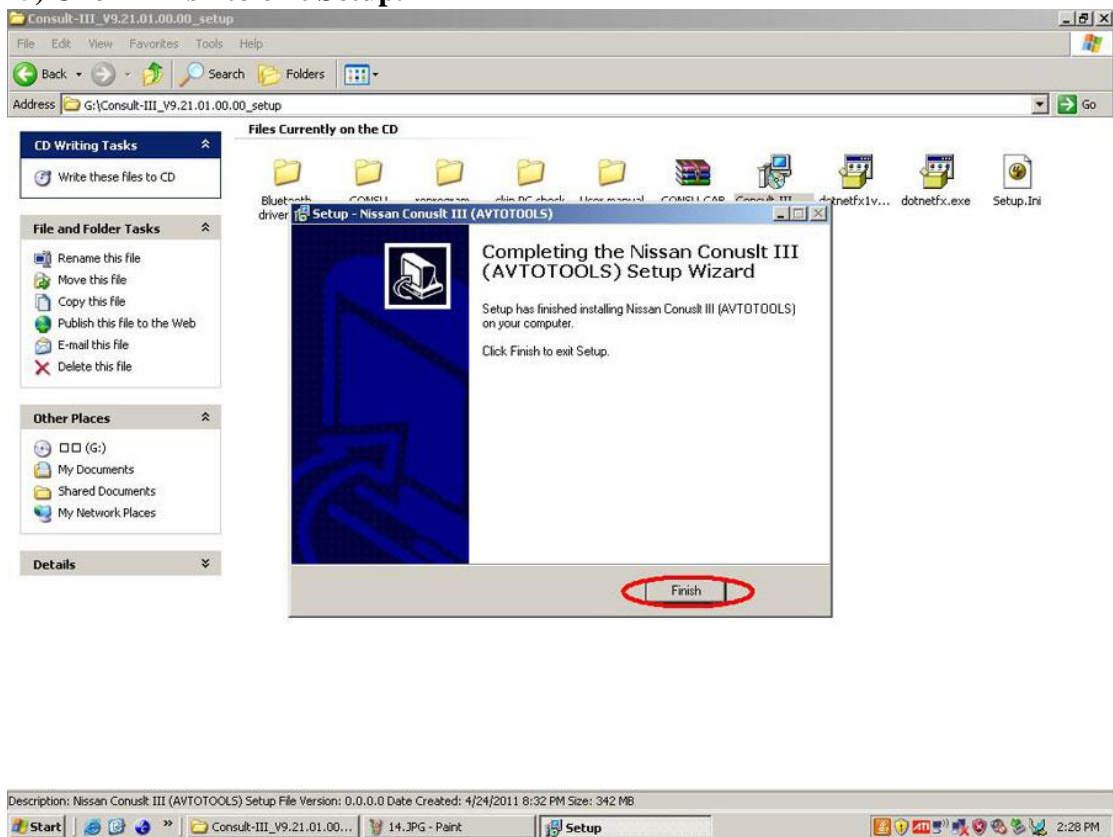
13) Installing



14) The installation of Consult-III software succeeded, click "Finish".

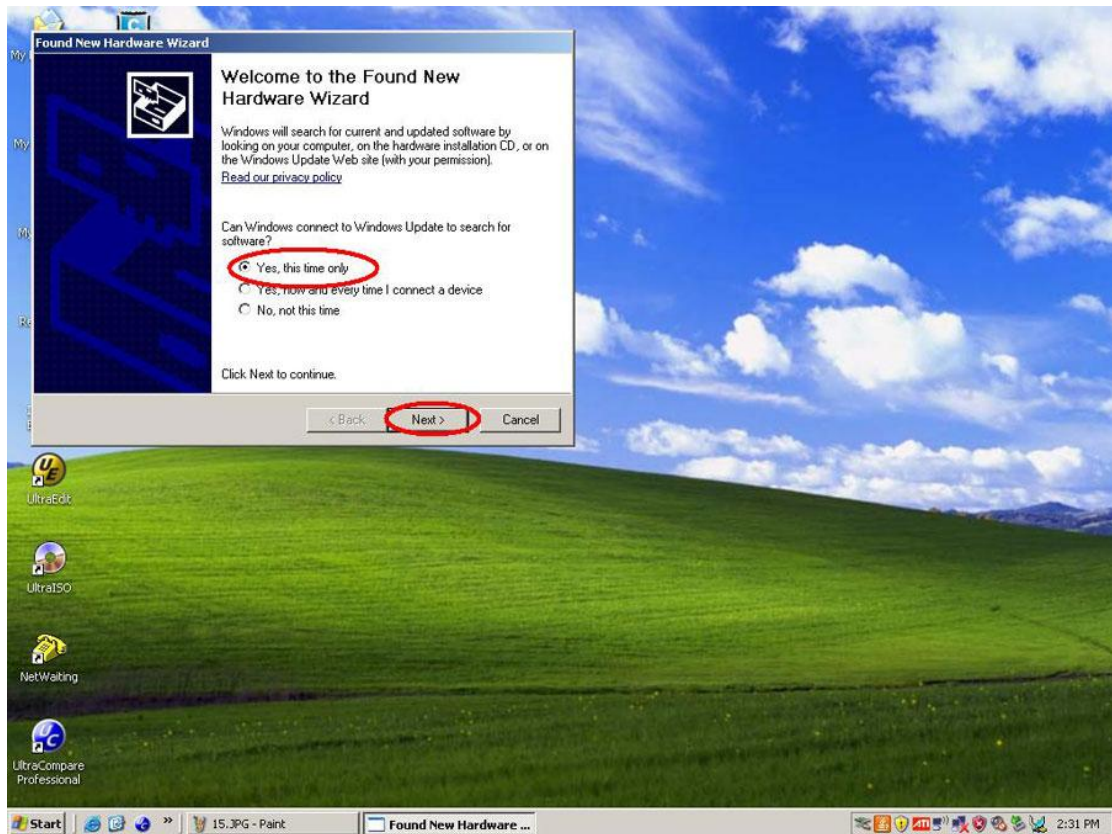


15) Click Finish to exit Setup.

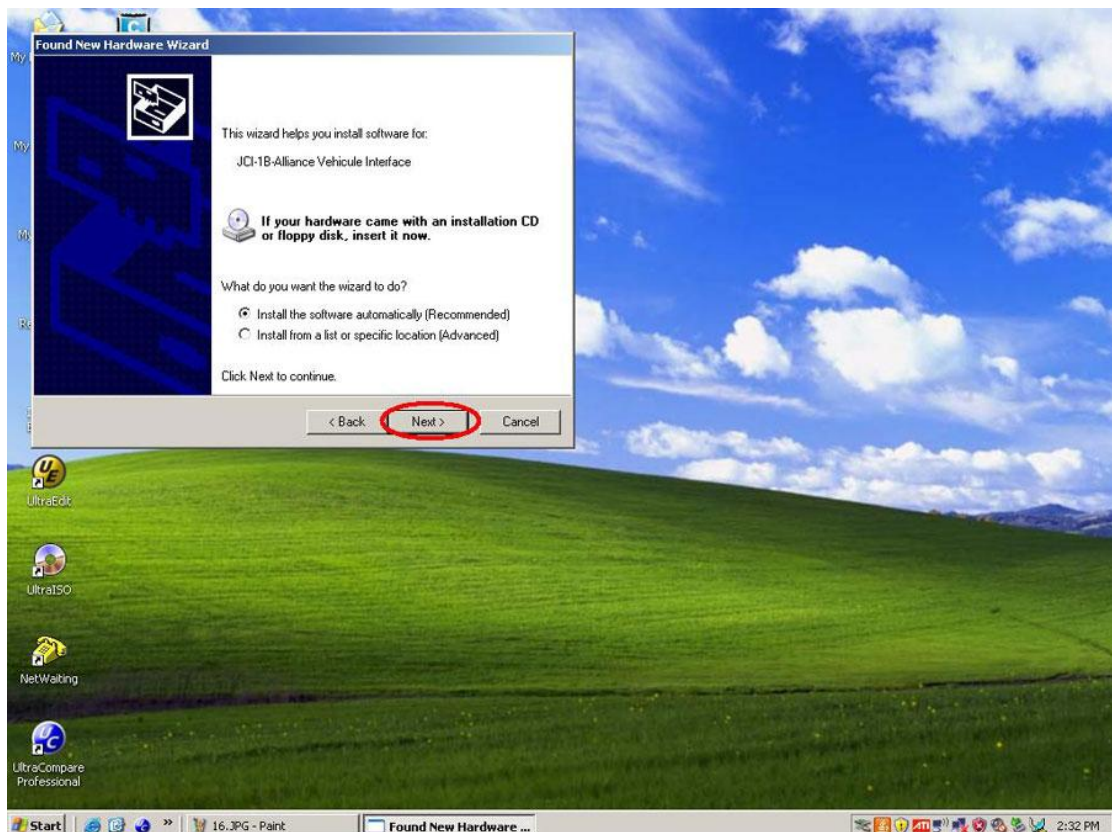


16) Found New Hardware Wizard, tick before "Yes, this time only" and then

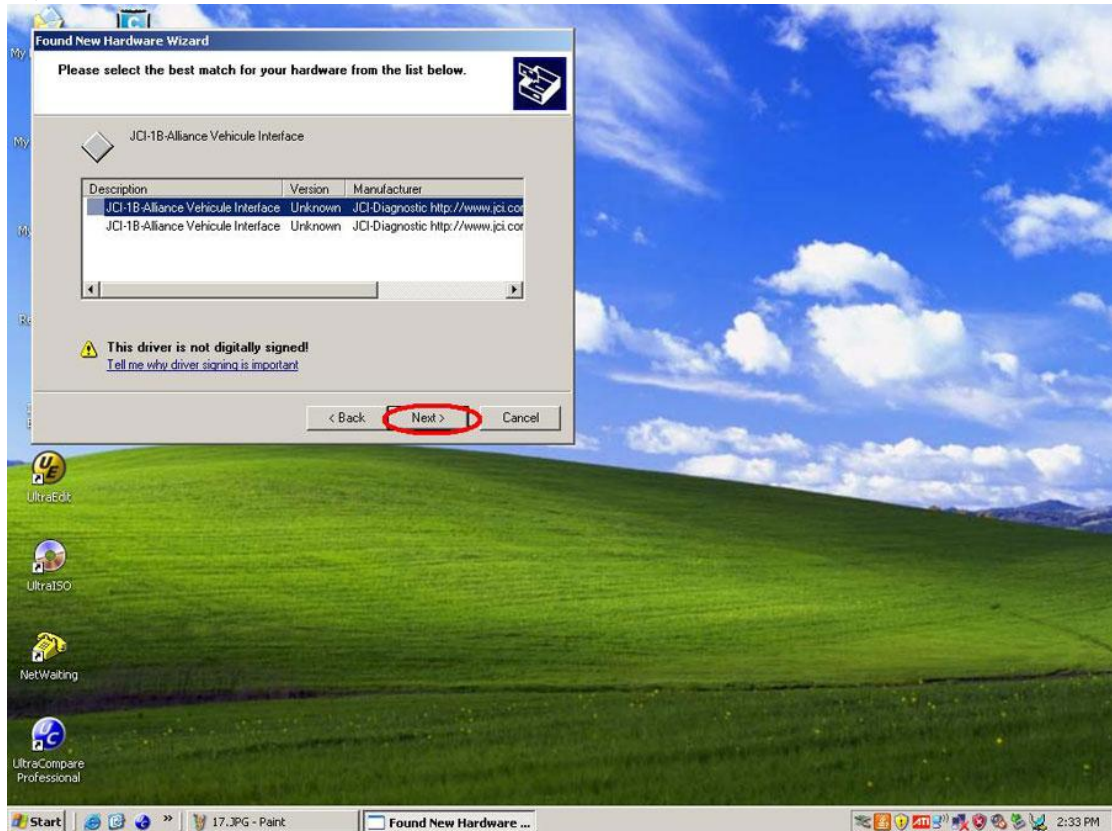
click "Next".



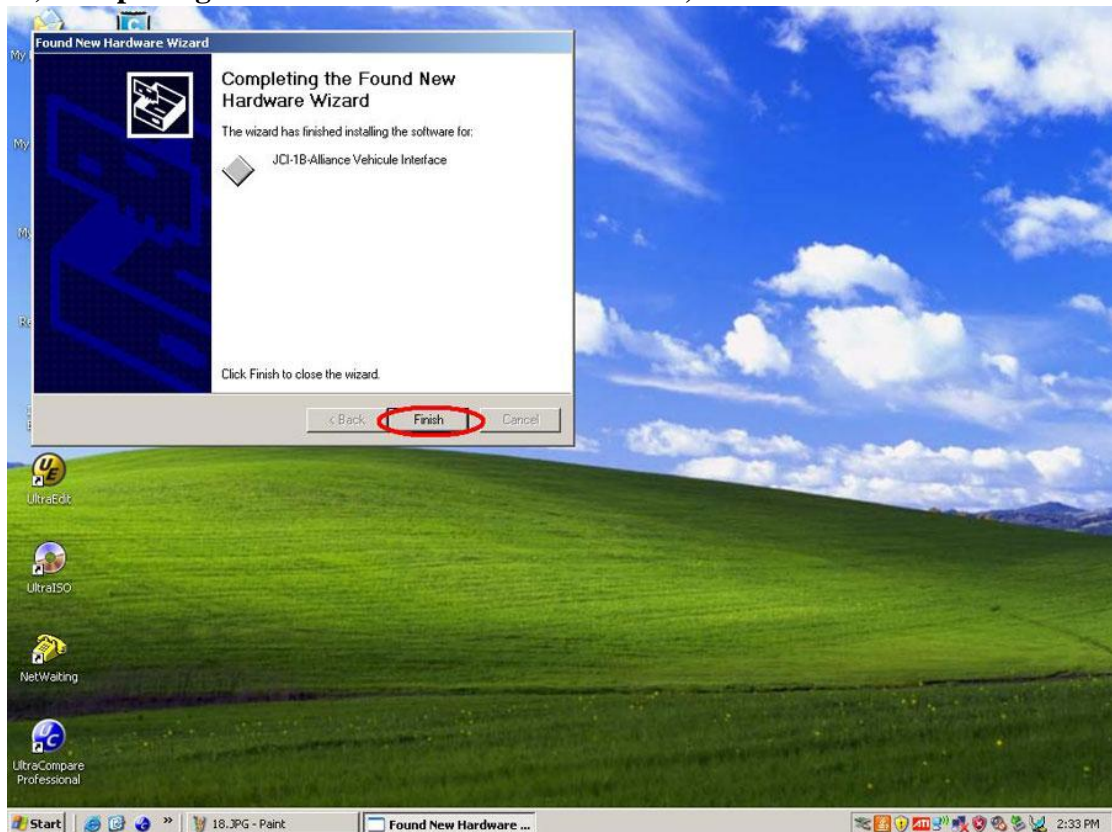
17) Tick before "Install the software automatically (Recommended)" and then Click "Next"



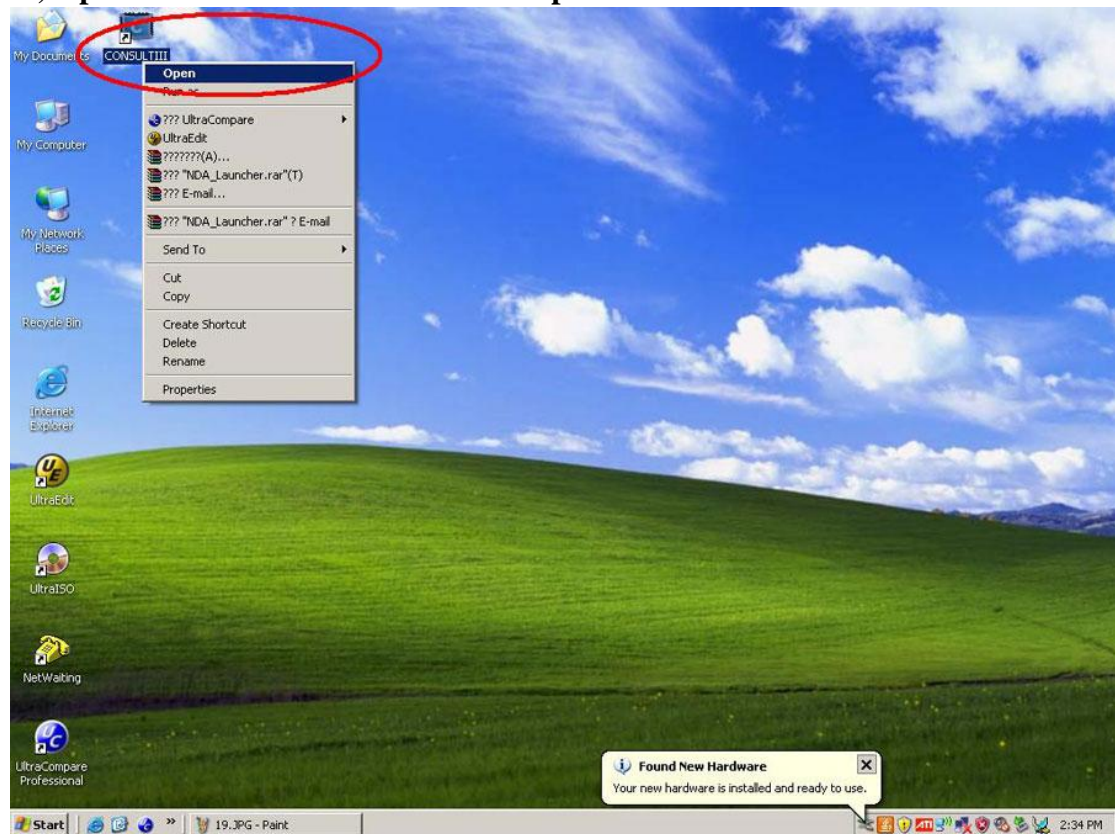
18) Select "JCI-1B-Aliance Vehicle Interface and then click "Next".



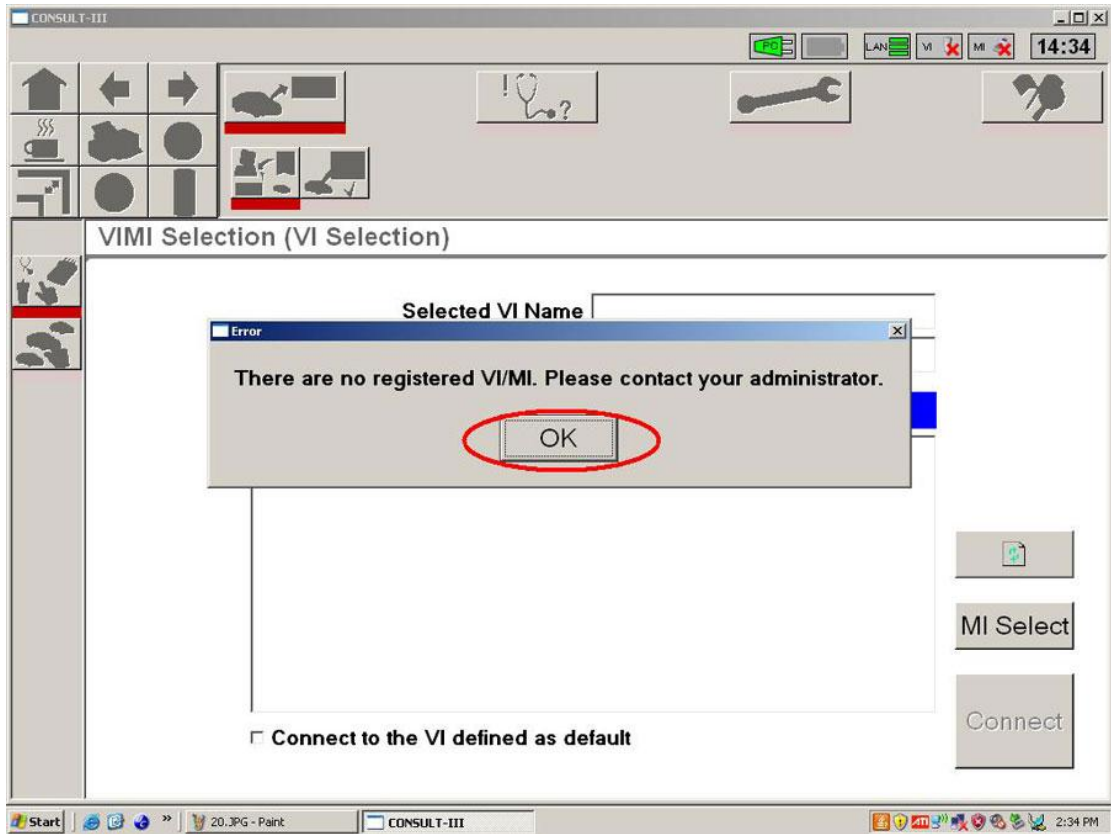
19) Completing the Found New Hardware Wizard, click "Finish".



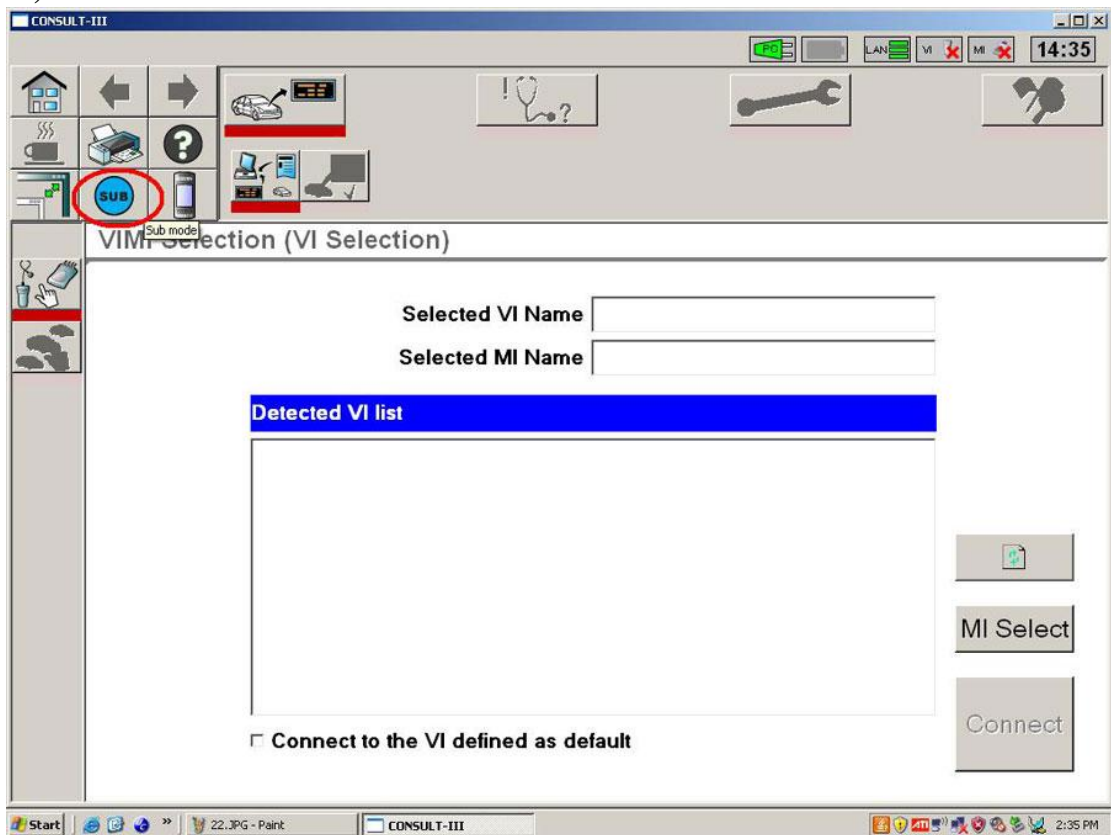
20) Open "CONSULTIII" on the desktop.



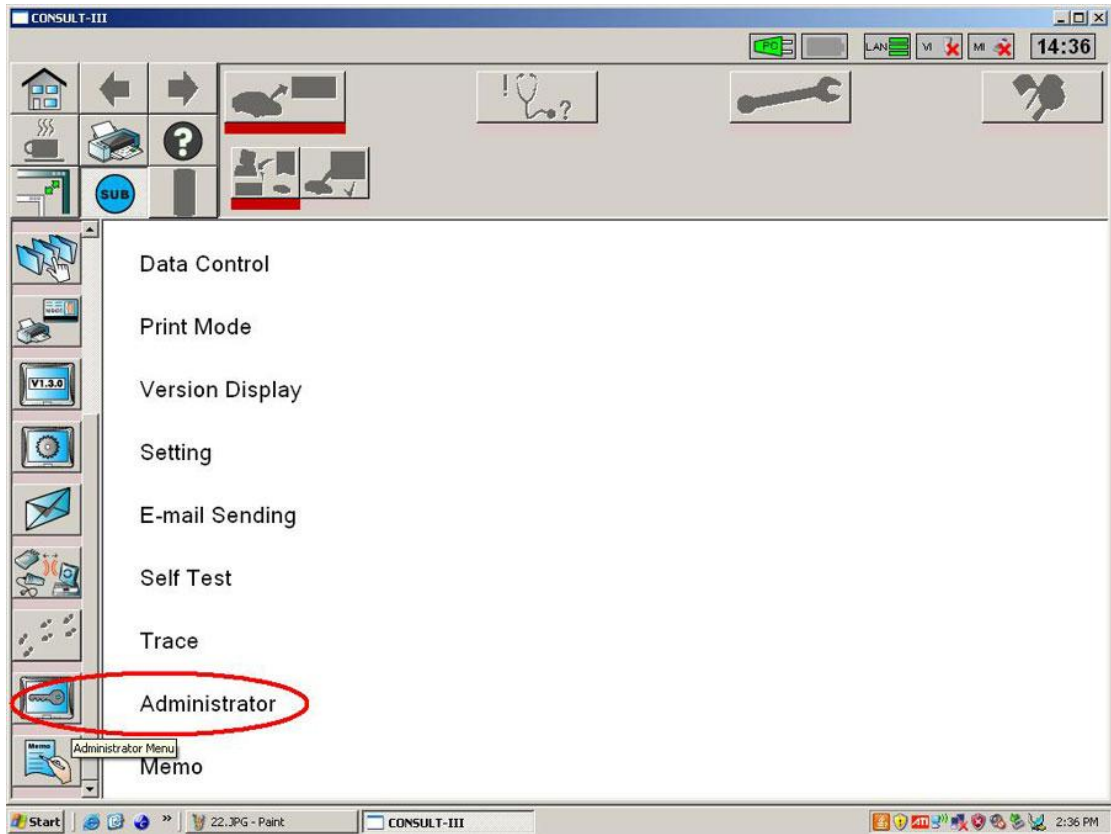
21) A window pops up reading "There is no registered VI/MI. Please contact your administrator." Click "OK".



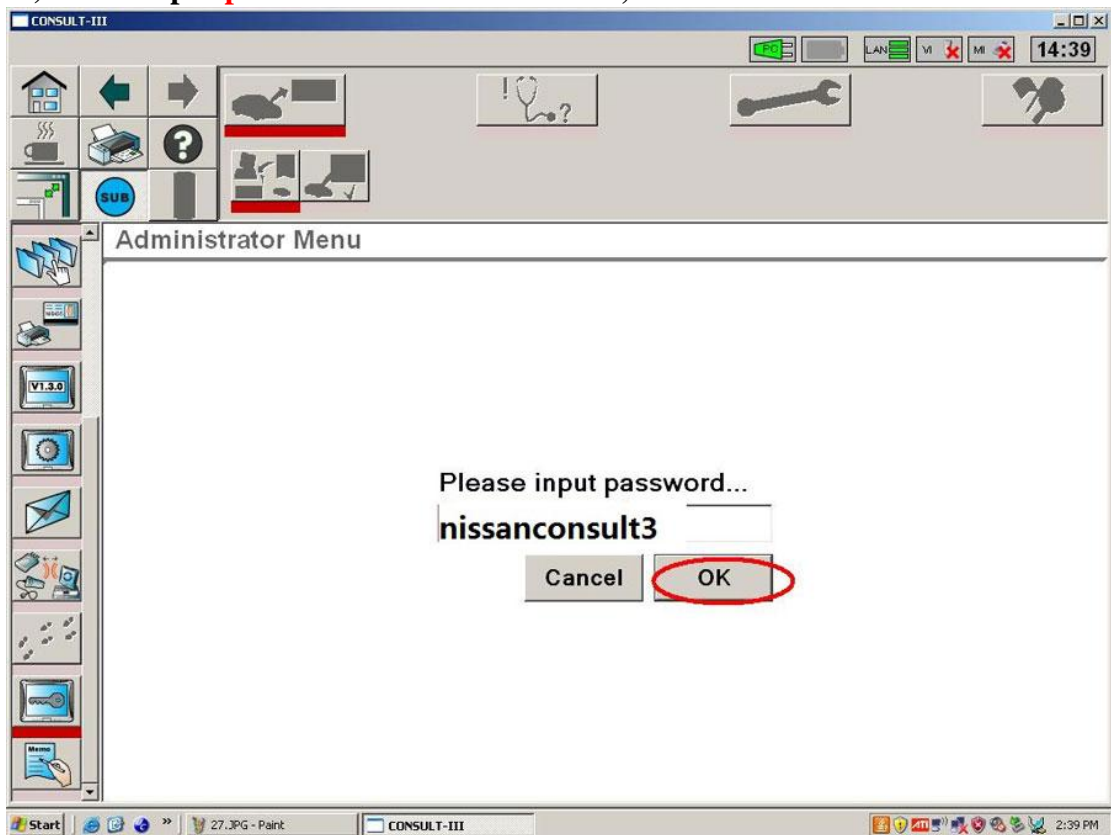
22) Click "Sub mode"



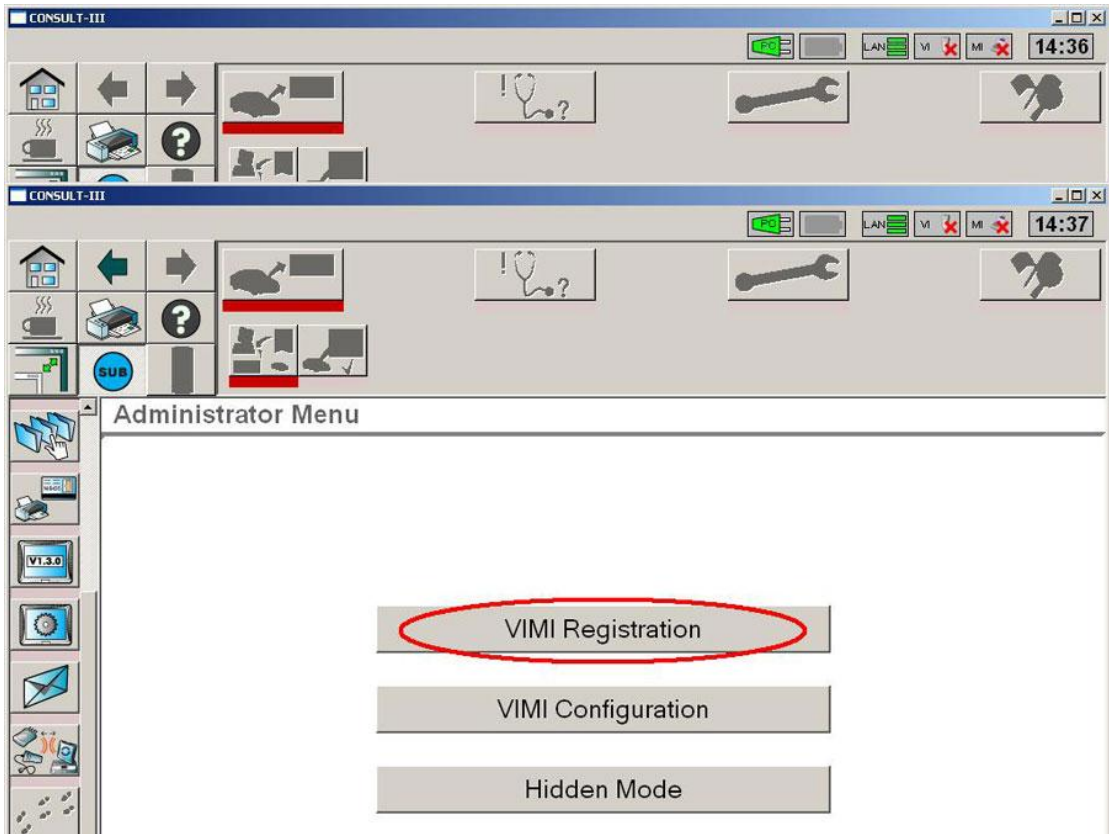
23) Click "Administrator Menu" on the left menu list.



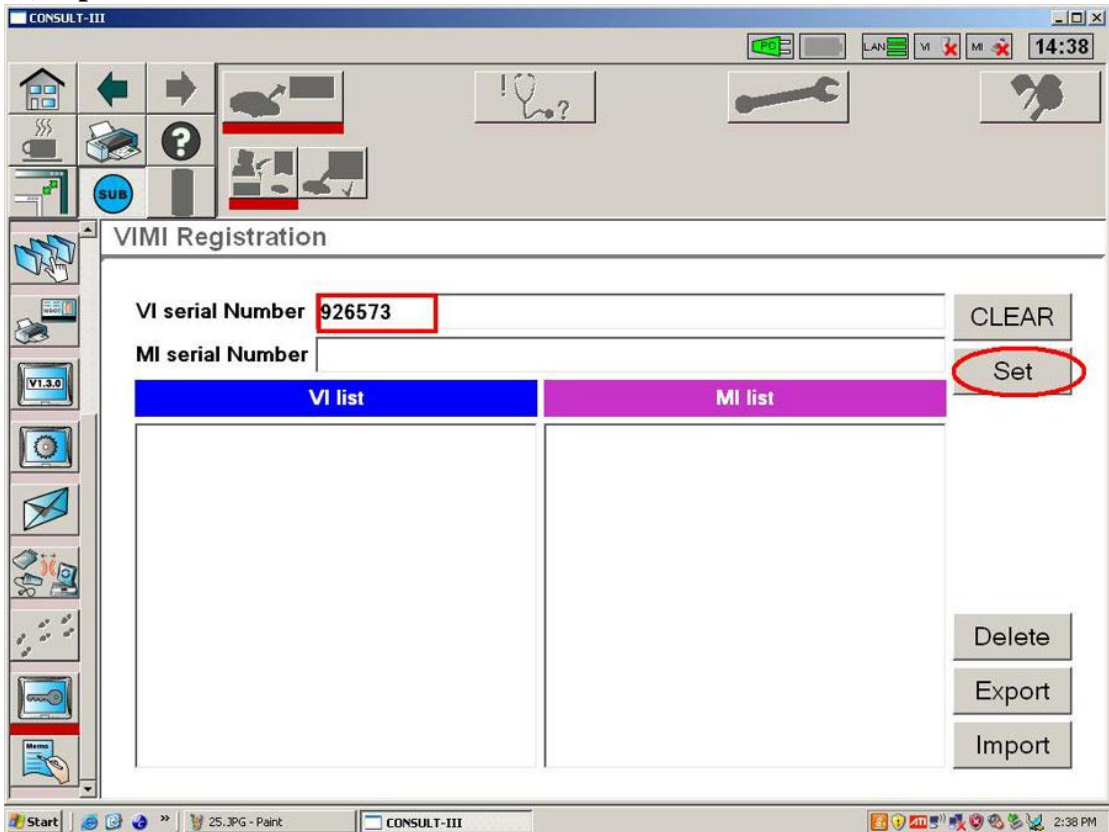
24) Please input **password...** "**nissanconsult3**", then click "**OK**".



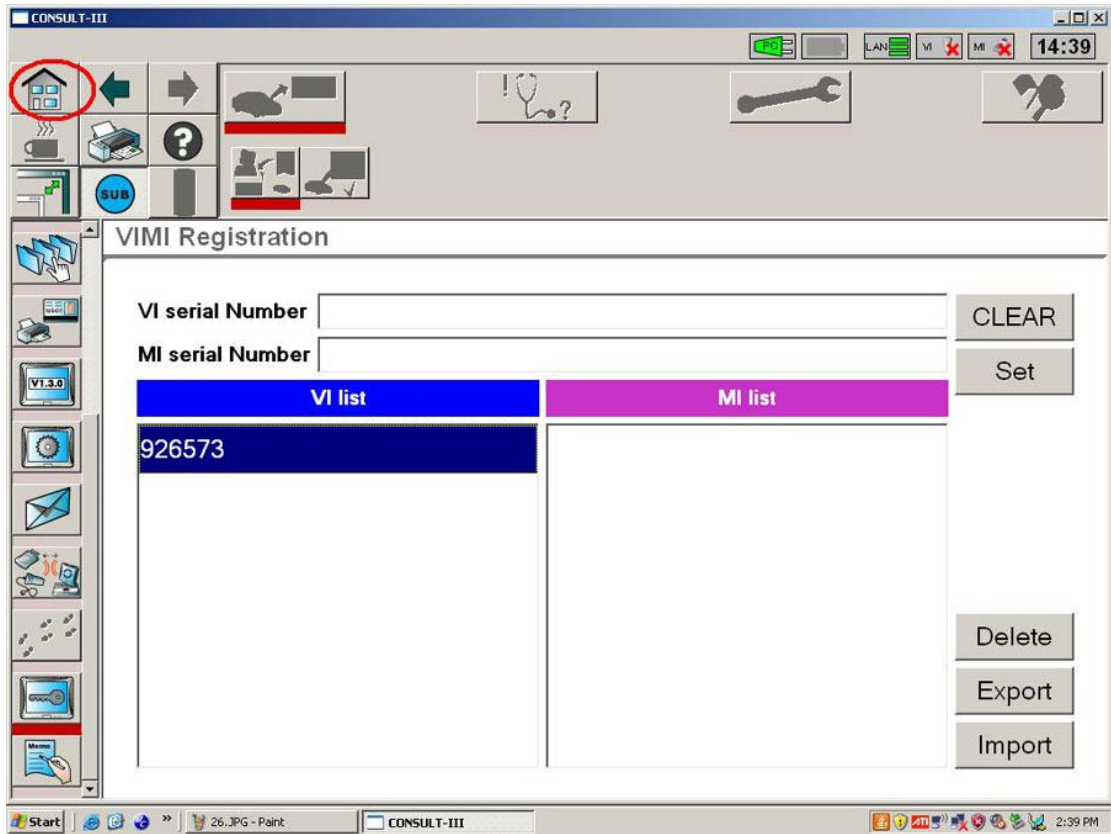
25) Click "**VIMI Registration**"



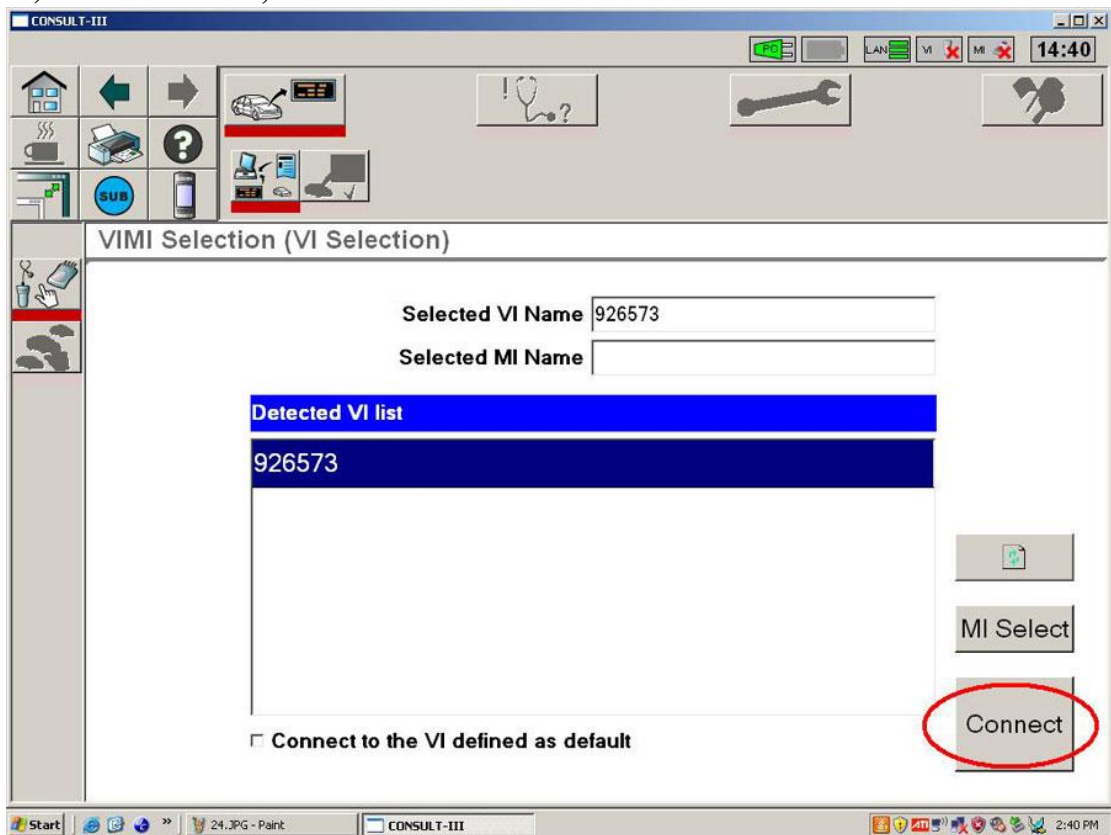
26) Input "VI serial Number" and then click "Set".



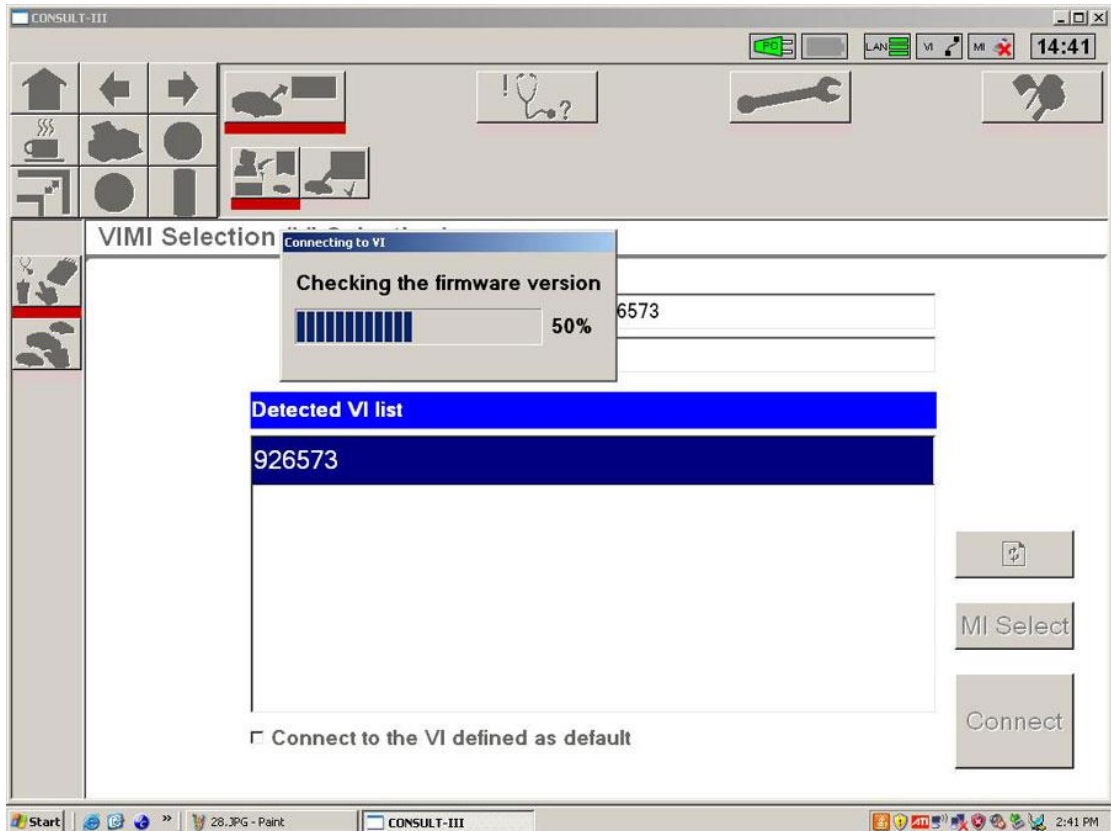
27) You can see the VI serial number under "VI list"



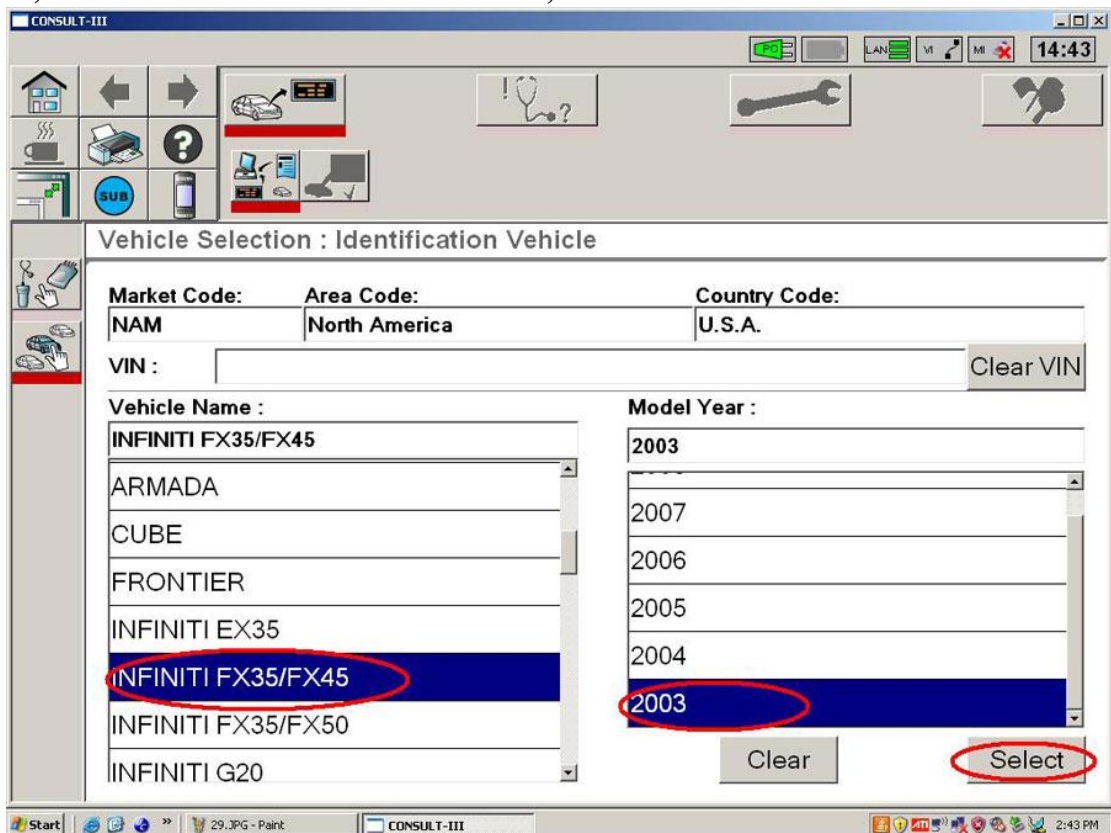
28) Detected VI list, click "Connect".



29) Checking the firmware version.



30) Select Vehicle Name and Model Year, then click "Select".



31) Click "Confirm" to confirm the information: Market Code, Area Code,

Country Code, Vehicle Name and Model Year.

CONSULT-III

14:43

Vehicle Selection : Confirmation Vehicle

Market Code: NAM Area Code: North America Country Code: U.S.A.

VIN :
Vehicle Name: INFINITI FX35/FX45
Model Year : 2003

Change Confirm

Start 30.JPG - Paint CONSULT-III 2:43 PM

32) Select System.

CONSULT-III

14:44

System Scope

Select System Shortcut System

ENGINE
ABS
METER/M&A
BCM
AIR BAG
ICC/ADAS
HVAC

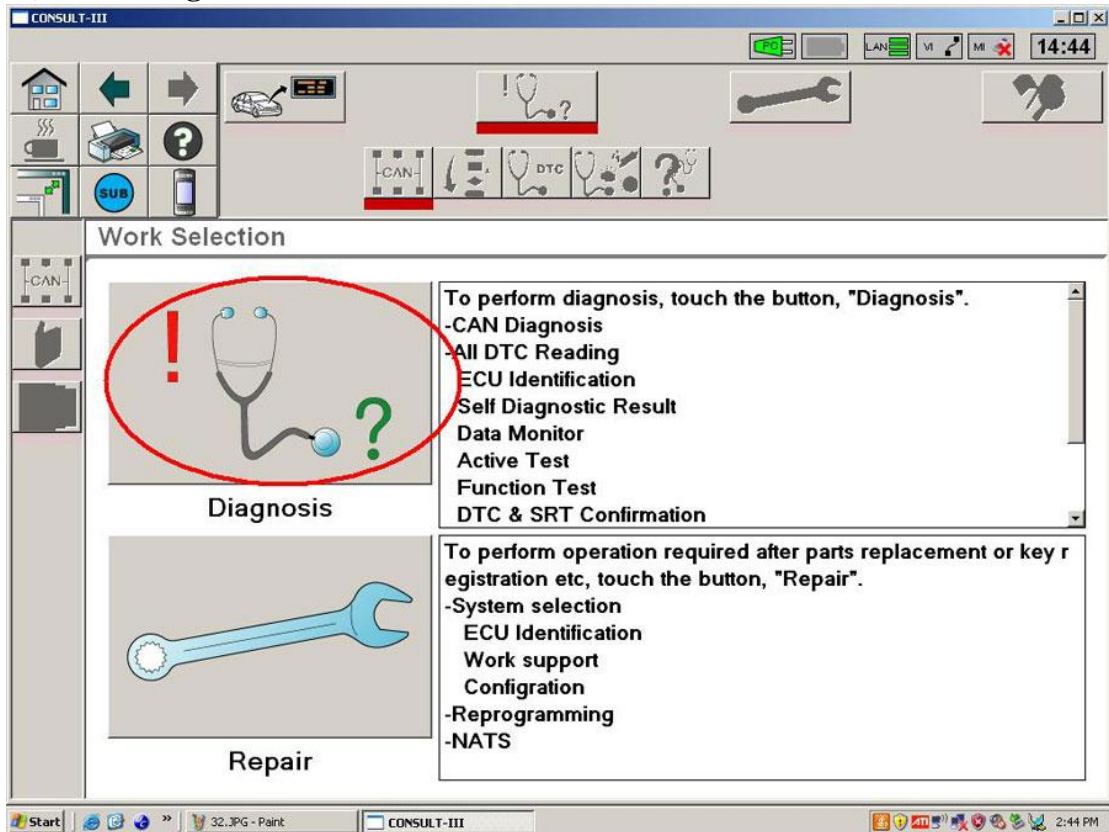
ENGINE

Start

System Call 81% Renew

Start 31.JPG - Paint CONSULT-III 2:44 PM

33) Select Diagnosis



34) Read out trouble codes.

