

ABRITES Diagnostics for Bike, Snowmobiles and Water scooters



ABRITES Diagnostics for Bike, Snowmobiles and Water scooters is a software intended for standard diagnostics and for some models - key programming

Standard diagnostic functions:

- For all electronic control units reading identification data
- For all electronic control units read/clear fault codes (DTCs)
- Device scan
- Data Display / Measured values

Special functions:

- Key programming

The key programming function currently works for BMW bikes.

The Bike, Snowmobiles and Water scooter diagnostics software support following models for diagnostics:

- Aprilia - Arrecife 500, Atlantic 500, Atlantic Sprint 400, Atlantic Sprint 500, Scarabeo 400, Scarabeo 500
- Bmw - R1200GS HP2 MegaMoto (2007+), R1200GS HP2 Enduro (2006-2008), R1200GS Adventure (2006+), R1200GS (2004+), R1200R (2006+), R1200RT (2005+), R1200S HP2 (2007+), R1200S (2006+), R1200ST (2005+), R1200C (1998-2006), R1200CL (2002-2006), R1150GS Adventure 2 spark (2003-2006), R1150GS Adventure (2002-2003), R1150GS 2 spark (2003-2006), R1150GS (2000-2003), R1150R 2 spark (2003-2007), R1150R (2001-2003), R1150RT 2 spark (2003-2008), R1150RT (2001-2003),

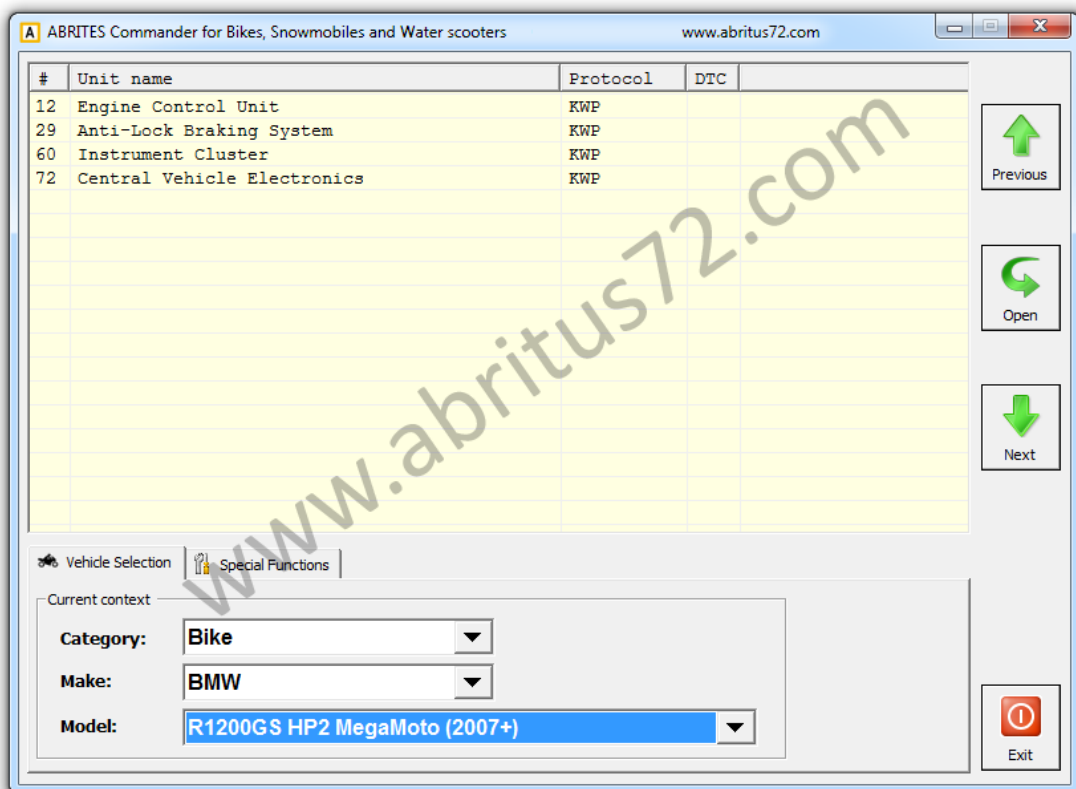
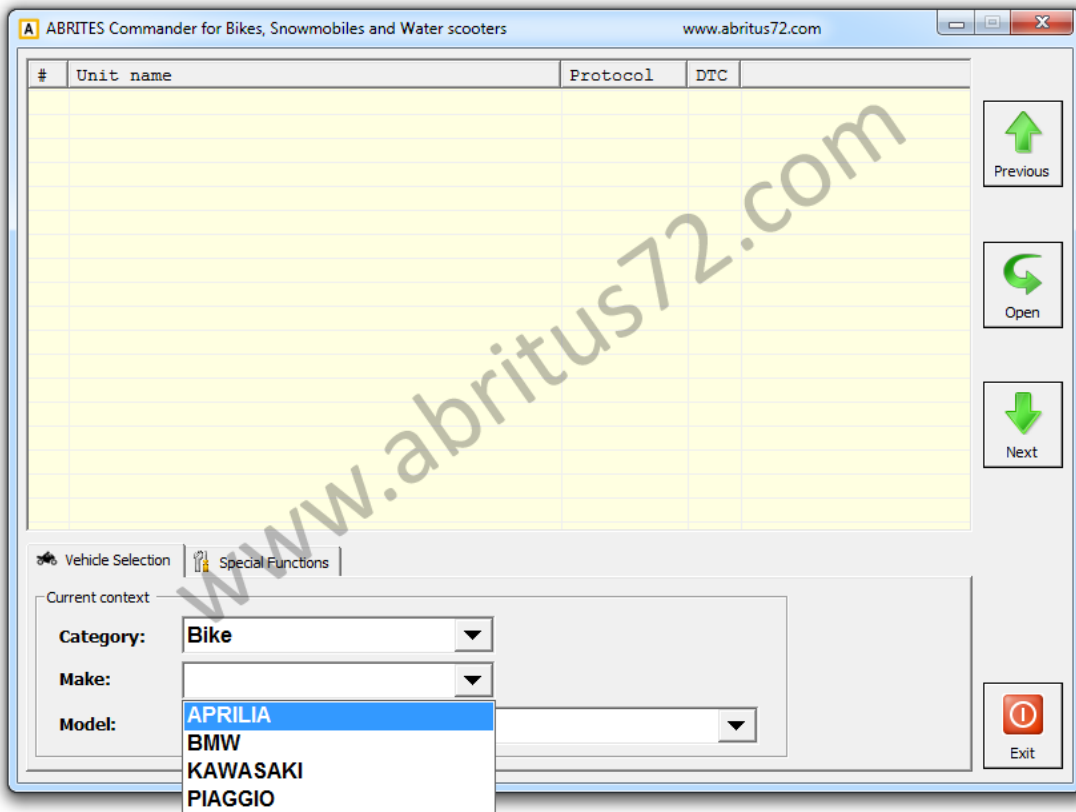
- R1150RS 2 spark (2003-2006), R1150RS (2001-2003),
R1100S 2 spark (2003-2006), R1100S (1998-2003), R850R 2
spark (2003-2008),
R850R (2002-2003), R850RT 2 spark (2003-2008), R850RT
(2001-2008), R850C (1999-2004), F800GS (2007+), F800R
(2007+), F800ST (2006+), F800S (2006+), F650GS 800cc
(2007+), F650GS Dakar 2 spark (2004-2008), F650GS Dakar
(2000-2004), F650GS 2 spark (2004-2008), F650GS
(2000-2004), F650CS 2 spark (2004-2006), F650CS (2000-
2004), K1300GT (2008+), K1300R (2008+), K1300S (2008+),
K1200GT (2006+), K1200GT (non-CAN)(2003-2005),
K1200LT (1999-2008), K1200R Sport (2006+), K1200R
(2005+), K1200RS (1997-2008), K1200S (2004+), G650GS
(2008+), G650 Xchallenge (2007+), G650 Xmoto (2007+),
G650 Xcountry (2007+), G450X (2008+), C1-200 (2001-
2006), C1-125 (2000-2006), S1000RR (2010+)
- Kawasaki - BJ250 Estrella, Concours, ER-6f '06, ER-6f '08, ER-
6n '06, ER-6n '08, Epsilon 250, GTR 1400, KSF450-B, KX 450
F, LX250, Ninja, ZX-10R '04, Ninja ZX-10R '06, Ninja ZX-10R
'08, Ninja ZX-12R '00, Ninja ZX-12R '04, Ninja ZX-14R '06,
Ninja ZX-14R '08, Ninja ZX-6R '03, Ninja ZX-6R '05, Ninja
ZX-6R '08, Ninja ZX-6R '09, Ninja ZX-6RR '03, Ninja ZX-6RR
'05, VN 1500 Mean Streak, VN 1500 Vulcan, VN 1600 Classic.
VN 1600 Mean Streak, VN 2000, VN 900 Classic '06, VN 900
Classic '08, Versys, Z1000 '03, Z1000 '07, Z750 '04, Z750
'08, Z750S '04, ZZR 1400 '06, ZZR 1400 '07
 - Piaggio - Beverly 400, Beverly 500, X8 400, X9 500

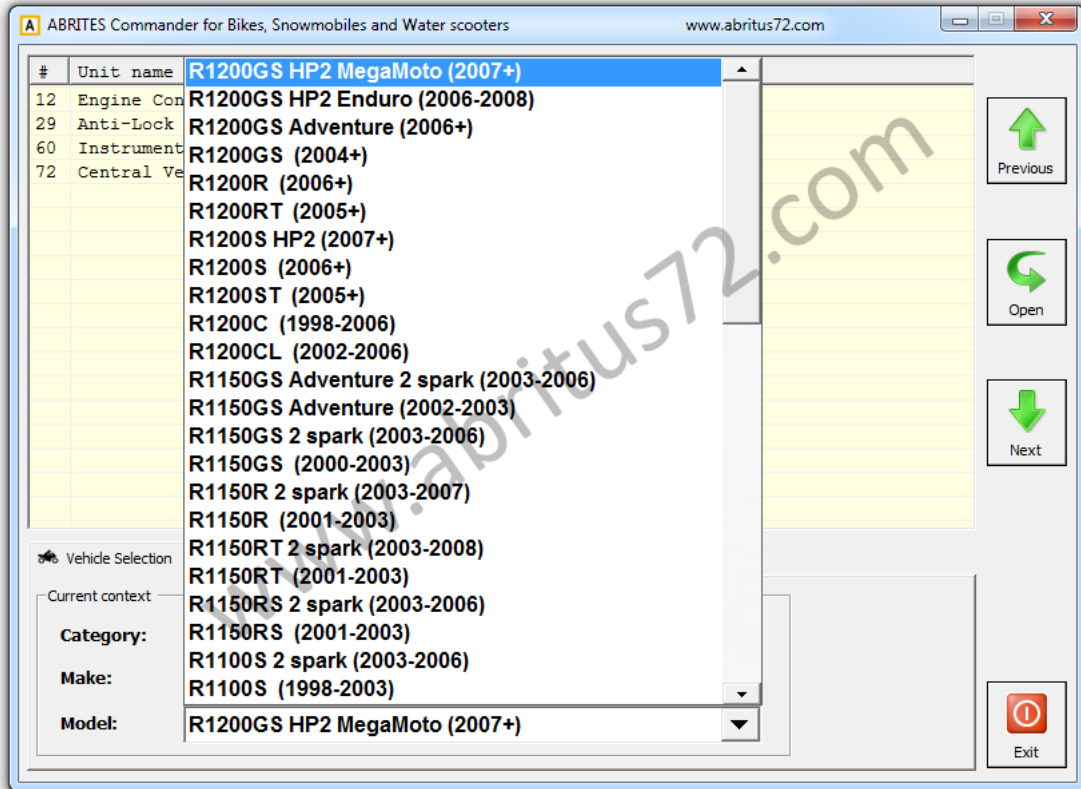
AVDI DIAGNOSTICS PRICES

Updated special functions - prices

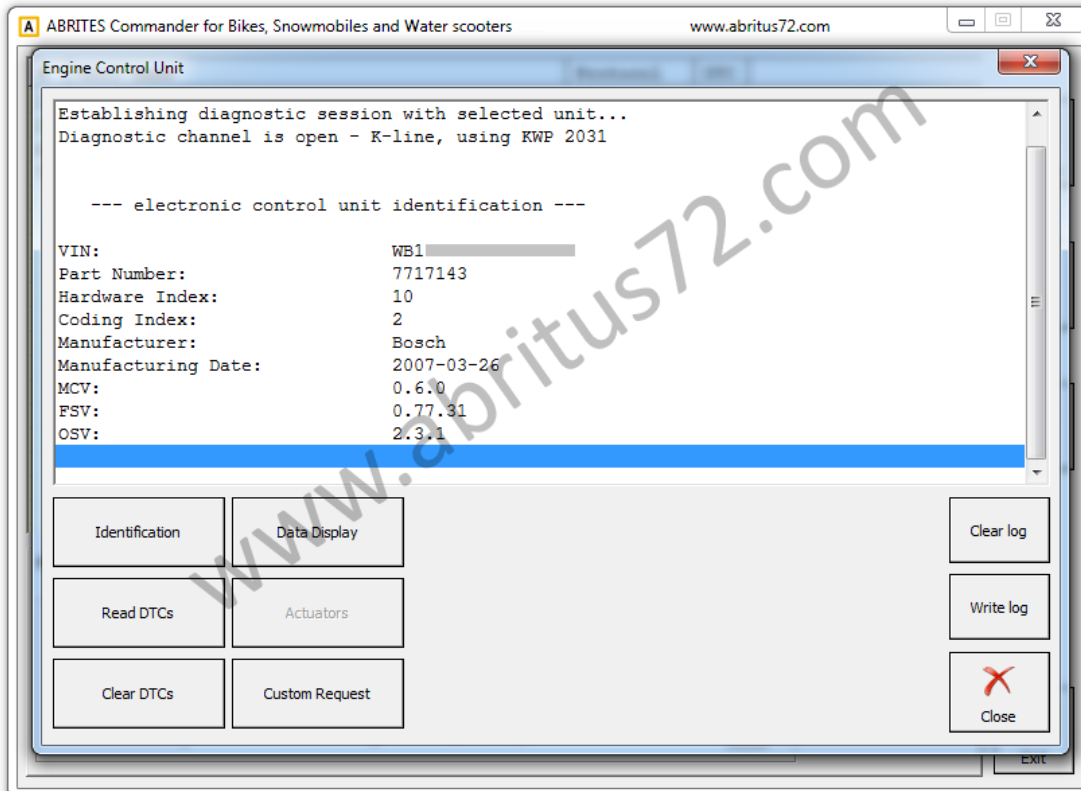
Note: [Ordering of special functions is possible only if you have our diagnostic interface AVDI](#)

MAIN SCREEN

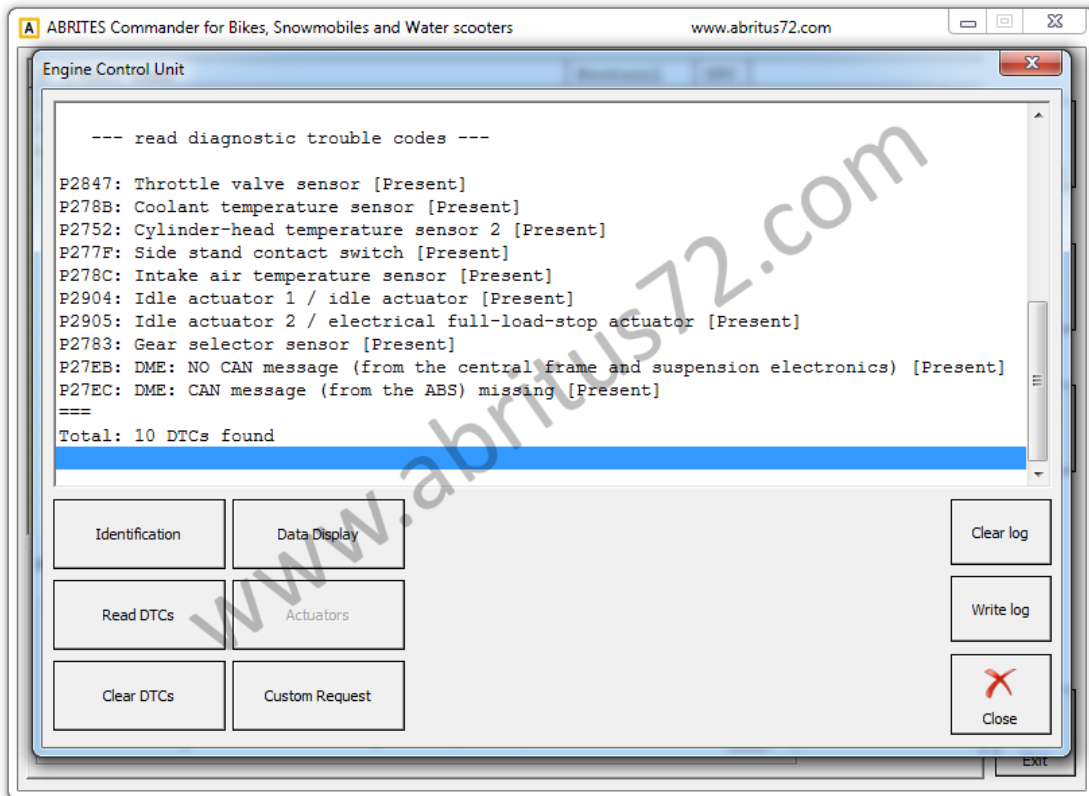




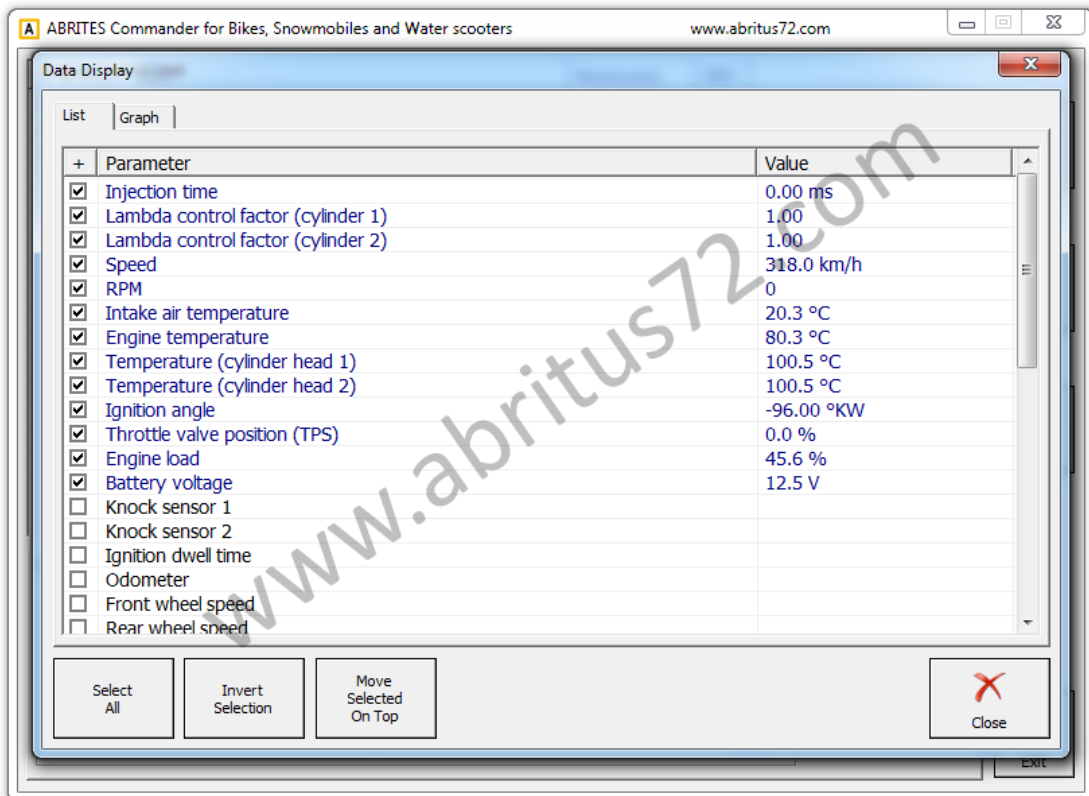
Diagnostic



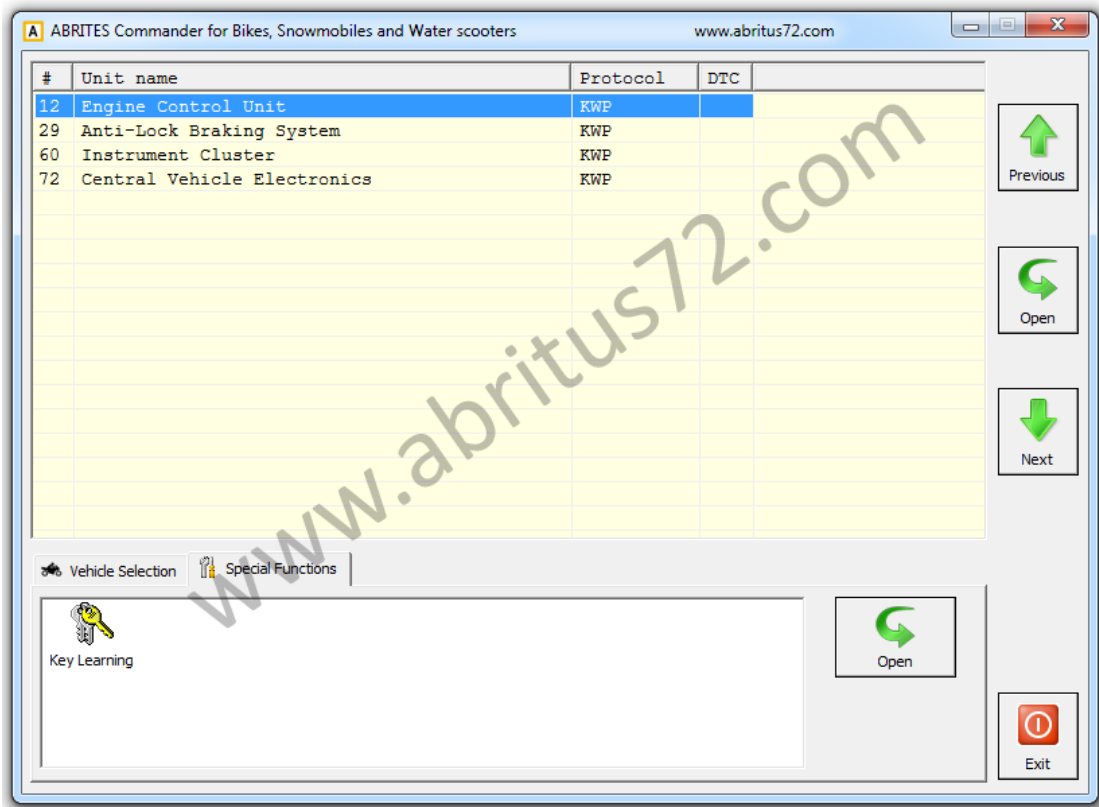
Read/Clear DTCs



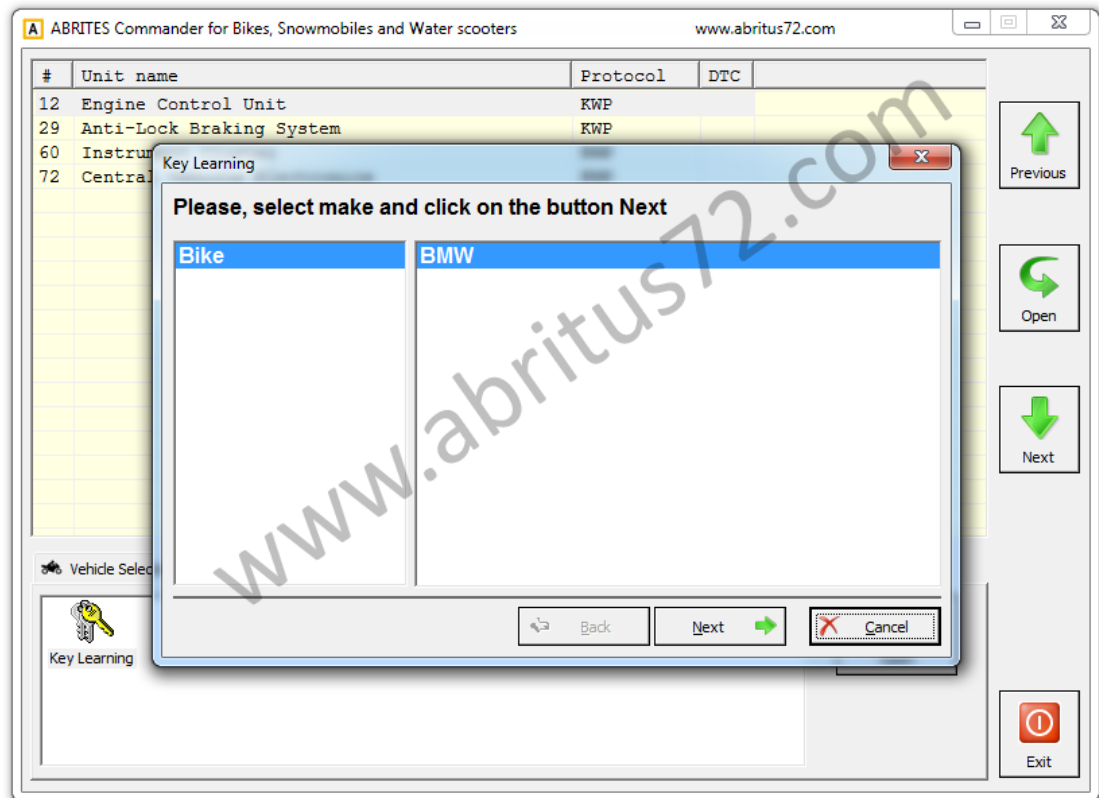
Data Display

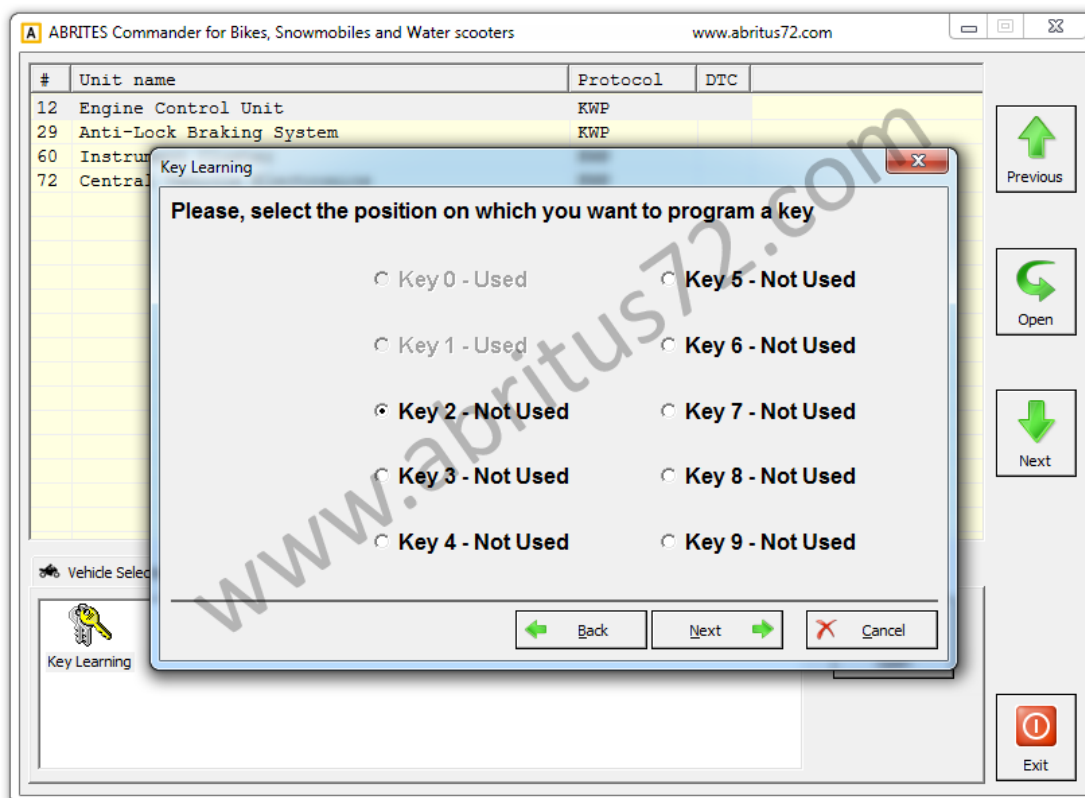


Key programming



BMW bike key programming





Remarks:

- 1, BMW: 宝马
- 2, Aprilia: 阿普利亚
- 3, Kawasaki: 川崎
- 4, Piaggio: 比亚乔集团