

# ABRITES Commander for Ford

ABRITES Commander for FORD is a software for diagnostic of FORD vehicles over CAN bus. It provide abilities for IN code calculations, key programming and mileage recalibration.

## Standard diagnostic functions:

- For all electronic control units reading identification data
- For all electronic control units read error (DTCs)
- For all electronic control units clear error (DTCs)
- Device scan
- Data Display / Measured values
- Fuel Injector Correction Factors
- Speed Limiter - Modify dealer set speed on Ford Transit MK6(2000-2006) and MK7(2006+)
- Set RPM Controller mode and associated engine speed - Ford Transit MK6(2000-2006) and MK7(2006+)
- Programmable Module Installation - With PMI you can safety to replace original ECU with used or new one. PMI transfers internal data from original ECU to replacement one. If original ECU is not available, you can obtain data from Ford Global database.
- Ford/Mazda PCM Read/Write flash memory:
  - EDC16C3 - 1.4/1.6 TDCI
  - EDC16C34 - 1.4/1.6 TDCI
  - SID804 - 1.8/2.0 TDCI
  - SID206 - 1.8/2.0 TDCI
  - Denso 1MB - Mazda 5/6 - 2.0D
- Fuel Injection Pump (FIP) Initialization - Bosch VP44 Diesel pump :
  - Focus I 1.8 TDDi - 1999 - 2001
  - Connect 1.8 TDDi - 1999 - 2001
  - Tourneo connect 1.8 TDDi 2003-2004
  - Transit 2.0 TDDi - 1999-2002
  - Mondeo 2.0 TDDi - 2000-2003
  - Mondeo 2.2 TDDi - 2000-2003
  - Fiesta IV 1.8 TD - 2000-2002
  - Fiesta Courier IV 1.8 TD - 2000-2002
- Service functions:
  - Reset The Powertrain COntrol module ( PCM ) Learned values
  - Reset The Exhaust Gas Temperature value
  - Initialize the Exhaust Gas Related component
  - Reset Keep Alive Memory ( KAM )

Reset the Diesel Particulate Filter ( DPF ) Learned Values  
Reset the Water in Fuel ( WIF ) Warning Indicator  
Reset the Knock Sensor Learned Values  
Reset the Fuel Metering Valve Learned Values  
Reset the Intake Air Throttle Valve Learned Values  
Reset the Exhaust Gas Recirculation ( EGR ) Valve Learned Values  
Reset the Differential Pressure Sensor Learned Values  
Fuel Injector Correction Factors  
Relearn Vehicle Data  
Reset the Mass Air Flow ( MAF ) Sensor Learned Values  
Reset the Fuel Pressure Relief Valve Open Count Learned Value  
Reset the Fuel Pressure Relief Valve Open Duration Learned Value

### **Special functions:**

#### **INCODE calculator for FORD, MAZDA, JAGUAR, LAND ROVER, MERCURY, LINCOLN**

- Ford Focus; C-MAX; S-MAX; Fusion; Mondeo; Kuga; Galaxy; Transit; Tourneo Conect; Ka; Fiesta; Taurus; Crown Victoria; Thunderbird; ZX2; Mustang; GT; Edge; Escape; Explorer; Expedition; Ranger; Super Duty; Freestar
- Mazda 2/Demio; Mazda3/Axela; Mazda5/Premacy; Mazda6/Atenza; Mazda8/MPV; CX-7; CX-9; Biante; Carol; AZ-Wagon; AZ-Offroad; Spiano/Scrum Vagon; Verisa; MX-5; Biante; Tribute
- Mercury Grand Marquis; Mariner; Sable; Milan; Mountaineer; Marauder; Montego; Monterey
- Lincoln Zephyr/MKZ; LS; Town Car; MKS; Aviator; Mark LT; MKT; Navigator; MKX; Blackwood
- Land Rover Discovery; Range Rover Defender; Freelander; Range Rover Sport
- Jaguar X-Type; XK/XKR; S-Type; XF/XFR; XJ8/XJR

#### **KEY LEARNING BY OBDII WITHOUT NEED FROM A IN/OUT CODES**

- Focus II 2004
- Transit Connect 2007+
- Transit 2006+
- Tourneo Connect

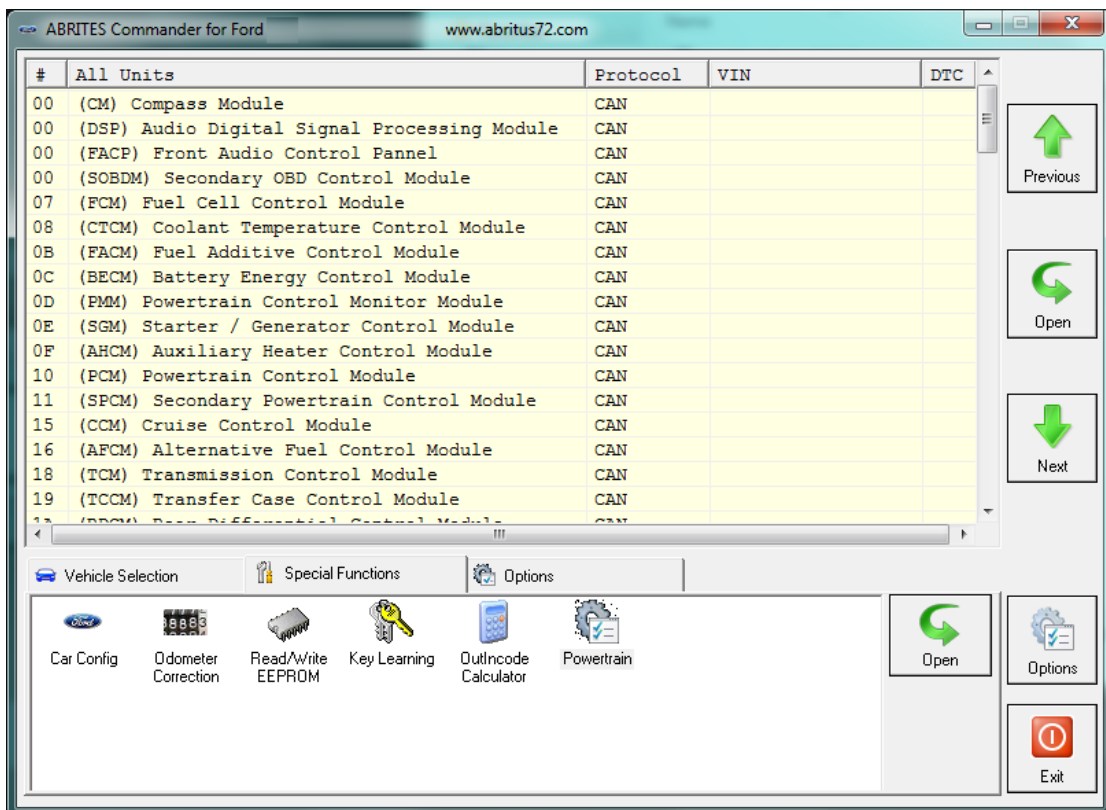
- Mondeo IV 2007+
- Fiesta V (CAN)
- Fiesta VI 2008+
- KA 2002-2008 (CAN)
- Galaxy III 2006+
- C-MAX
- Fusion
- S-MAX
- Kuga
- Mazda 2 2006+
- Mazda 3 2006+
- Mazda 6 2006+
- Explorer, Expedition, Ranger, Mariner, Mountaineer, F150, Fx50, Ex50 - 2005-2009
- Escape 2006-2011
- Edge, Flex 2006-2010
- Lincoln - MKS, MKX, MKT, MKZ 2006-2010

### **Mileage recalibration by OBDII**

- Ford Focus II 2004+
- Transit Connect 2007+
- Tourneo Connect
- Mondeo IV High Line 2007+
- Fiesta (CAN)
- Galaxy III 2006+
- C-MAX
- Fusion
- S-MAX
- Kuga
- Crown Victoria 2006+
- Escape 2006+
- Flex 2006+
- E150-E350 2006+
- F150-F350 2006+
- Freestar 2006+
- Freestyle 2006+
- Mustang 2006+
- Edge
- Focus USA 2005+
- Fiesta USA 2010+
- Explorer 2004+
- Expedition 2004+
- Ranger 2004+

- Grand Marquis 2006+
- Town Car 2005+
- F150 2005+
- Fx50 2005+
- Ex50 2005+
- Flex 2007+
- Edge 2007+
- Fusion USA 2006+

## MAIN SCREEN



(IPC) Instrument Panel Cluster Control Module

5 CMDTCs found!


U1900 "CAN Communication Bus Fault - Receive Error"	Status: 60
No Additional Fault Symptom Available for this DTC	
DTC Present at Time of Request	
MIL Off for this DTC	
Test Complete	
C1750 "Accelerator Position Sensor Out of Range"	Status: 60
No Additional Fault Symptom Available for this DTC	
DTC Present at Time of Request	
MIL Off for this DTC	
Test Complete	
B1202 "Fuel Sender Circuit Open"	Status: 60
No Additional Fault Symptom Available for this DTC	
DTC Present at Time of Request	
MIL Off for this DTC	
Test Complete	
B1681 "PATS Transceiver Module Signal Is Not Received"	Status: 60
No Additional Fault Symptom Available for this DTC	

Key Learning

IPC Identification.  
Delay 15 sec.....

PATS Number of Ignition Keys	: 0
Number of Keys	: 2
Unlimited Keys Mode	: Disable
Spare Key Programming	: Disable
Service Module	: Yes
Security Access	: Coded
Minutes	: 8
PATS Status	: 0400
Unlimited Transponder Security Key ID	: 00000001
PATS Security Access	: In Progress

PATS outcode request.

 PATS Reading in Progress. Please wait...

Read / Write EEPROM

ECU (IPC) Instrument Panel Cluster

```

00000000 2 F2 F2 F2 BF FF FF 29 05 01 0A 68 FF FF 5D A7 .....h..].
00000010 19 06 68 FF 00 FF FF FF 01 FF FF FF 07 FF FF FF ..h.....
00000020 11 FF FF FF 00 00 00 70 00 00 00 9A 00 0A 00 B2 .....p.....
00000030 00 3A 02 BF 00 3A 02 BF 00 5F 04 86 00 6E 05 46 .....n.F
00000040 00 70 05 5E 03 FF FF FF 03 FF FF FF 00 00 17 70 .p.^.....p
00000050 00 00 00 4F 0B B8 06 21 17 70 0B F8 FF FF FF FF ...O...!p.....
00000060 FF FF FF FF FF FF FF FF FF FF FF FF FF 01 FF FF FF .....
00000070 01 FF FF FF 10 FF FF FF 01 F4 FF FF 03 E8 FF FF .....
00000080 00 00 C8 00 00 00 00 A0 10 00 00 BF 6C 00 02 FB .....l...
00000090 BE 00 05 6A C8 00 05 89 FF FF FF FF FF FF FF FF ...j.....
000000A0 03 FF FF FF 03 FF FF FF 00 00 5D C0 00 00 00 5A .....]....Z
000000B0 0F A0 02 7B 1F 40 04 70 46 50 09 81 5D C0 0C 8D ...{.pFP..}...
000000C0 FF FF FF FF FF FF FF FF 01 FF FF FF 03 FF FF FF .....
000000D0 02 FF FF FF F7 FF FF FF 06 2A FF FF 06 2A FF FF .....*...*..
000000E0 02 FA FF FF 02 FA FF FF 19 FF FF FF C0 C0 11 42 .....B
000000F0 10 1B 04 07 04 00 00 E9 04 00 00 00 23 FB 80 00 .....#...
00000100 00 0E 28 28 28 09 66 01 00 FF FF 08 DA 00 9C C0 ..((.f.....
00000110 07 00 DA 00 07 00 FF 00 08 00 C8 00 10 00 C8 00 .....
00000120 11 00 BE 00 19 00 AC 00 23 00 9A 00 2F 00 83 00 .....#.../...
00000130 3E 00 6C 00 4F 00 55 00 66 00 3E 00 87 00 27 00 >.l.O.U.f.>...'
00000140 9E 00 1B 00 B9 00 10 00 C3 00 00 00 DA 00 00 00 .....
00000150 11 08 04 02 01 08 08 0B 11 01 01 01 01 01 01 .....
00000160 01 01 00 30 00 30 00 30 00 30 00 30 0E 28 00 30 00 30 ...0.0.0.0.(.0.0
00000170 00 30 00 78 11 08 04 02 01 08 08 0B 11 01 01 01 .0.x.....
00000180 01 01 01 01 01 01 00 30 00 30 00 30 00 30 0E 28 .....0.0.0.0.(
00000190 00 30 00 30 00 30 00 78 11 08 04 02 01 08 08 0B .0.0.0.x.....

```

EEPROM Read 2048 Bytes

Read EEPROM

Write EEPROM

Load from File...

Save to File...

Close