

---

# VPECKER USER MANUAL

---

<b>1. Running environment</b> .....	<b>3</b>
<b>2. Software installation</b> .....	<b>3</b>
2.1 Client downloading .....	3
2.2 Client setup .....	3
<b>3. Software activation and downloads</b> .....	<b>7</b>
3.1 Software activation .....	7
3.2 Software downloads .....	12
3.3 Software management .....	15
<b>4. Software introduction</b> .....	<b>17</b>
4.1 Online store .....	18
4.2 Diagnosis service system .....	20
4.2.1 Features .....	20
4.2.2 Vehicle coverage .....	23
4.2.3 System coverage .....	24
4.2.4 Function coverage .....	25
4.3 Expert service system .....	25
4.4 Maintenance service .....	26
4.5 Settings .....	26
4.5.1 Language .....	26
4.5.2 Run mode .....	27
4.5.3 Unit selection .....	28
4.5.4 Display mode .....	29
4.5.5 Logging .....	29
4.5.6 Update .....	30
4.5.7 About me .....	31
4.5.8 Skin Setting .....	32
4.6 DTC query .....	32
4.7 Dictionary .....	34
4.8 Example .....	34
4.8.1 Communication .....	34

---

4.8.2 Read ECU information.....	38
4.8.3 Read DTCs .....	39
4.8.4 Erase DTCs .....	39
4.8.5 Data List .....	40
4.8.6 Inspection .....	44
4.8.7 TP Position Reset .....	47
4.9 Screenshot.....	49
4.10 Print.....	50
4.11 Manual .....	52
4.12 Diagnose function list .....	53
4.13 Feedback .....	55
4.14 Data Management .....	55
4.14.1 Image management .....	55
4.14.2 APP management .....	57
4.15 User Management .....	58
<b>5. Products website.....</b>	<b>59</b>
<b>6. Warranty.....</b>	<b>59</b>

## 1. Running environment

- Hardware environment:
  - Windows laptop, PC or PAD
  - CPU speed: more than 1.0G Hz
  - Memory: more than 1GB
  - Disk: more than 32 GB
  - Communication port: Wi-Fi or Bluetooth
- Software environment:
  - Windows XP, Windows 7, Windows 8, Windows 10

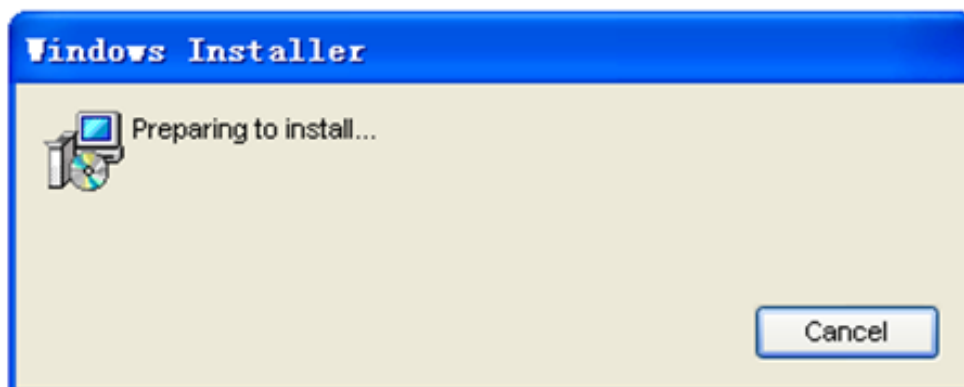
## 2. Software installation

### 2.1 Client downloading

Access the website: <http://www.vpecker.com/vpecker-software-download/>, and download “Vpecker Setup Vx.xx”

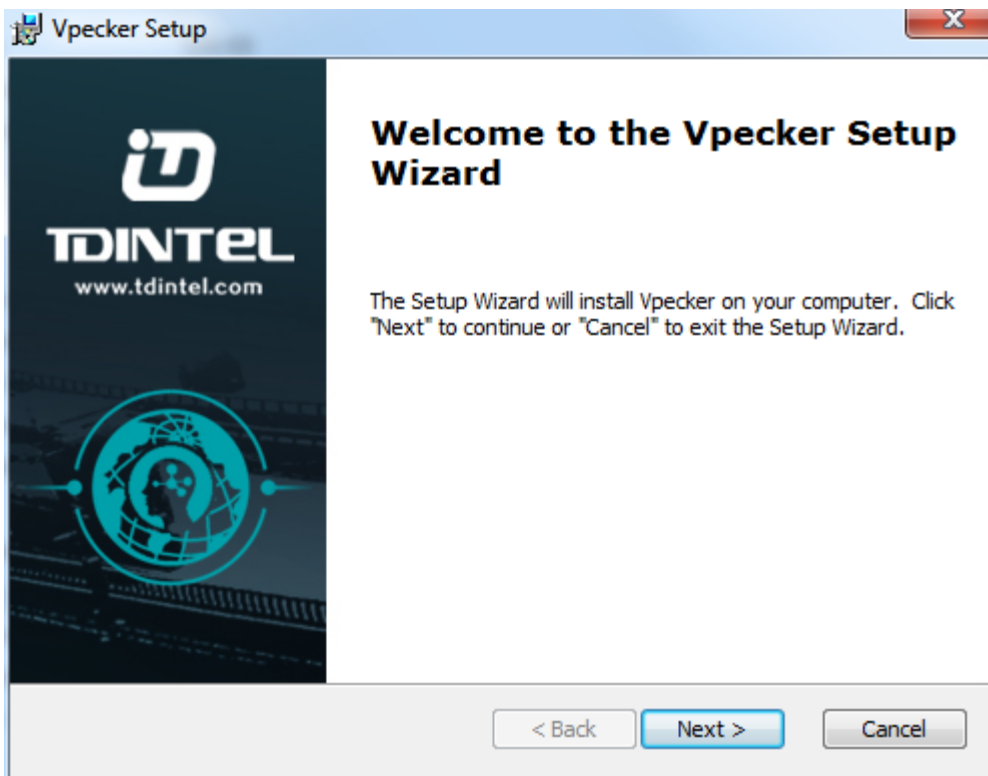
### 2.2 Client setup

Unzip Vpecker Setup Vx.xx and run Vpecker setup.exe:

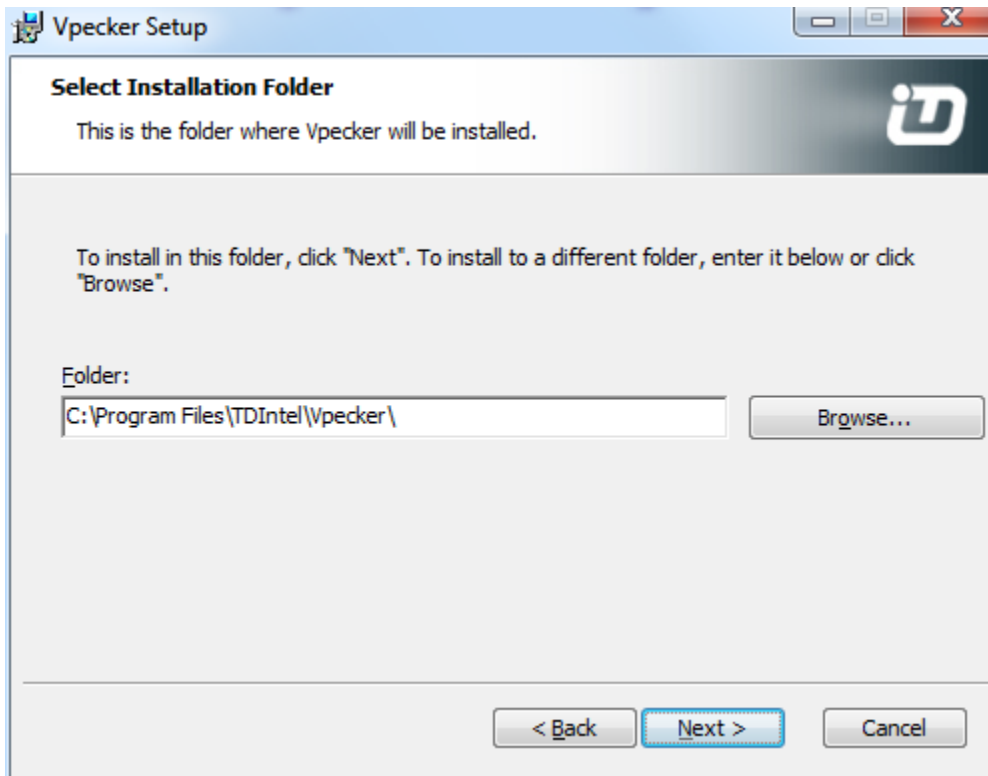




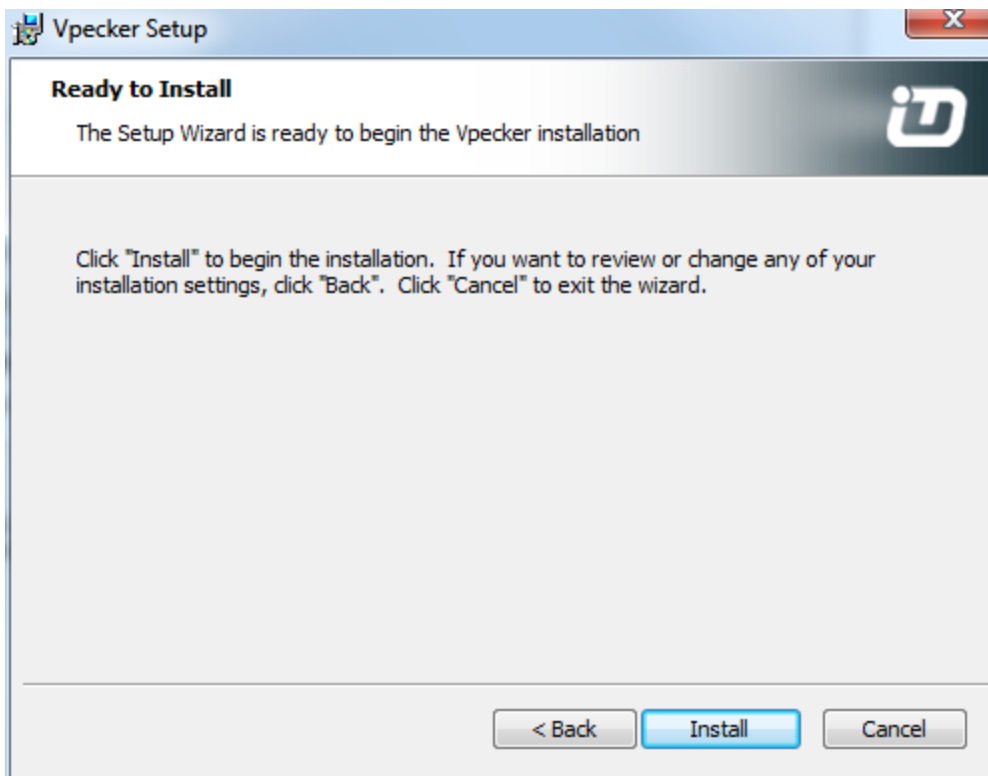
Please click “Next”.



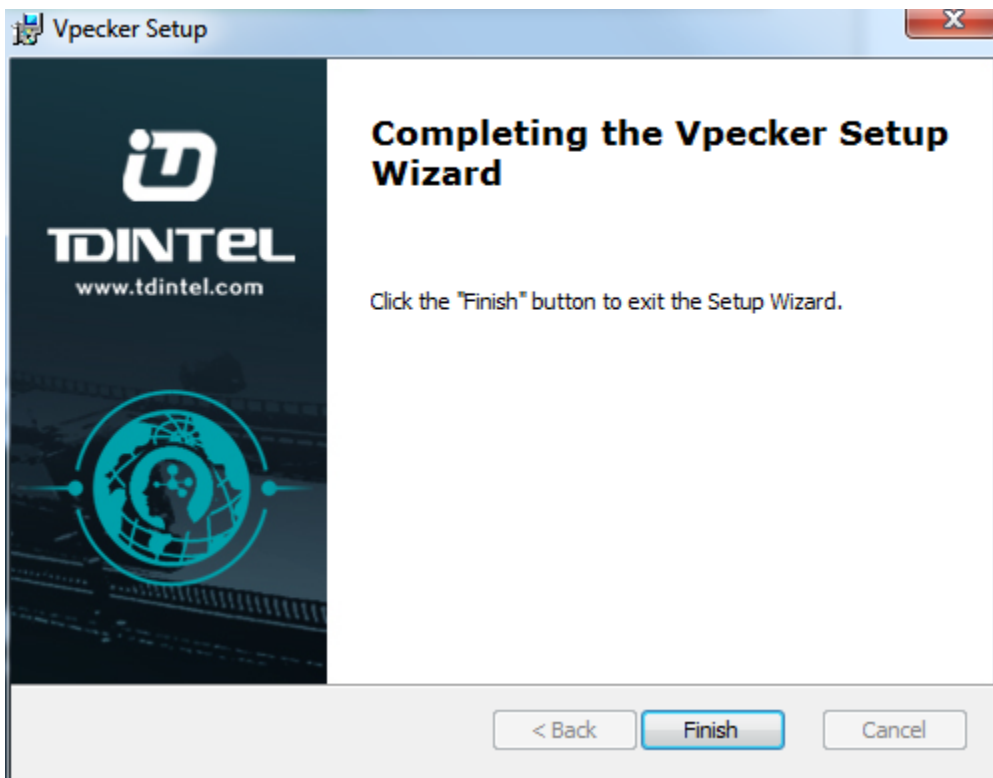
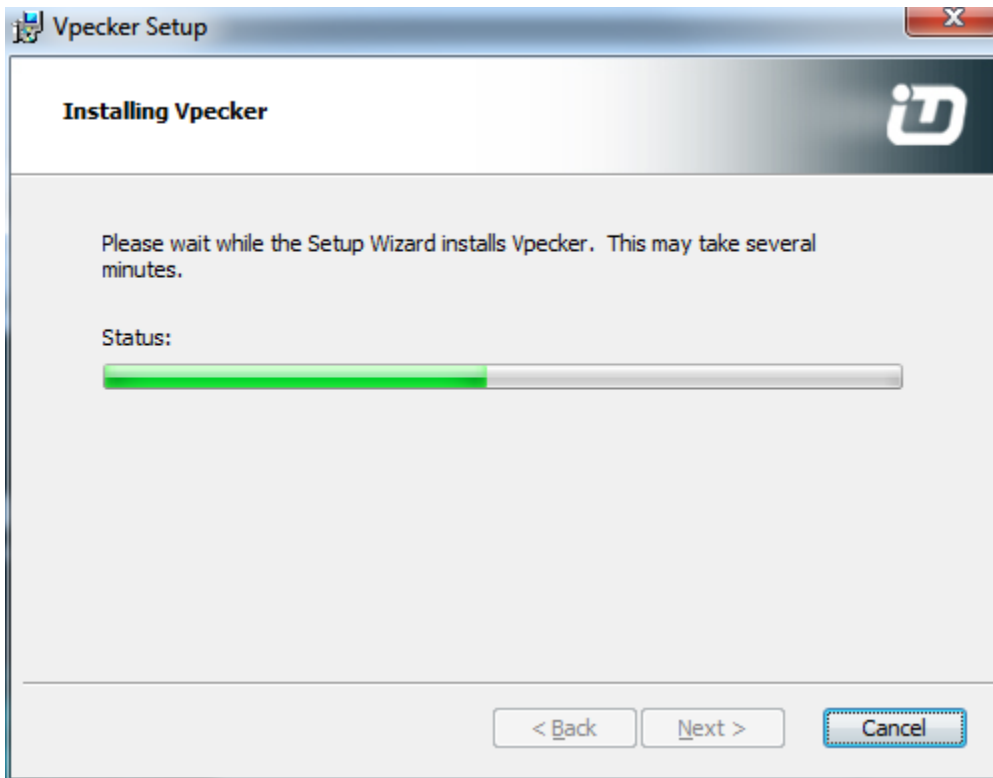
Please click “Next”.



You can change the path to install the software, then, please click “Next”.



Please click “Install”.



VPECKER wireless diagnostic service system installs successfully.

## 3. Software activation and downloads

### 3.1 Software activation

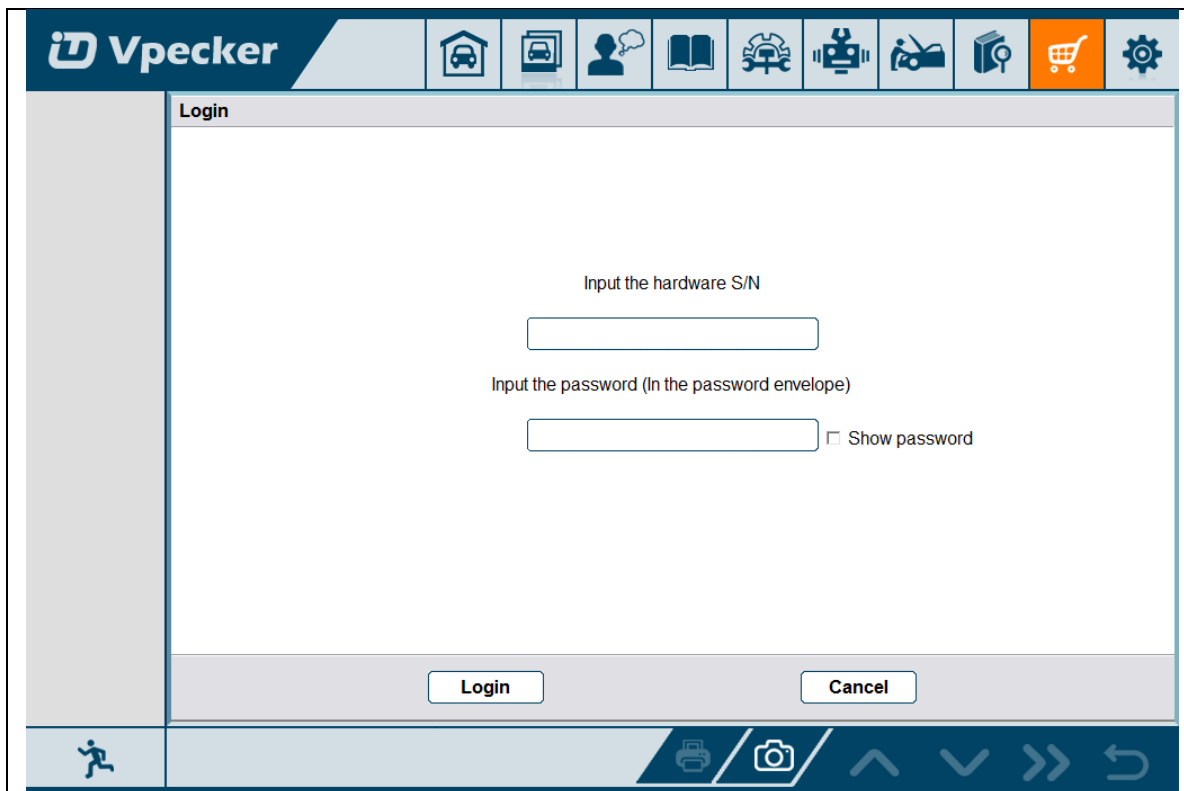
At first, please keep network working. Run VPECKER APP, then click “Online store” to get applications.



Please wait...

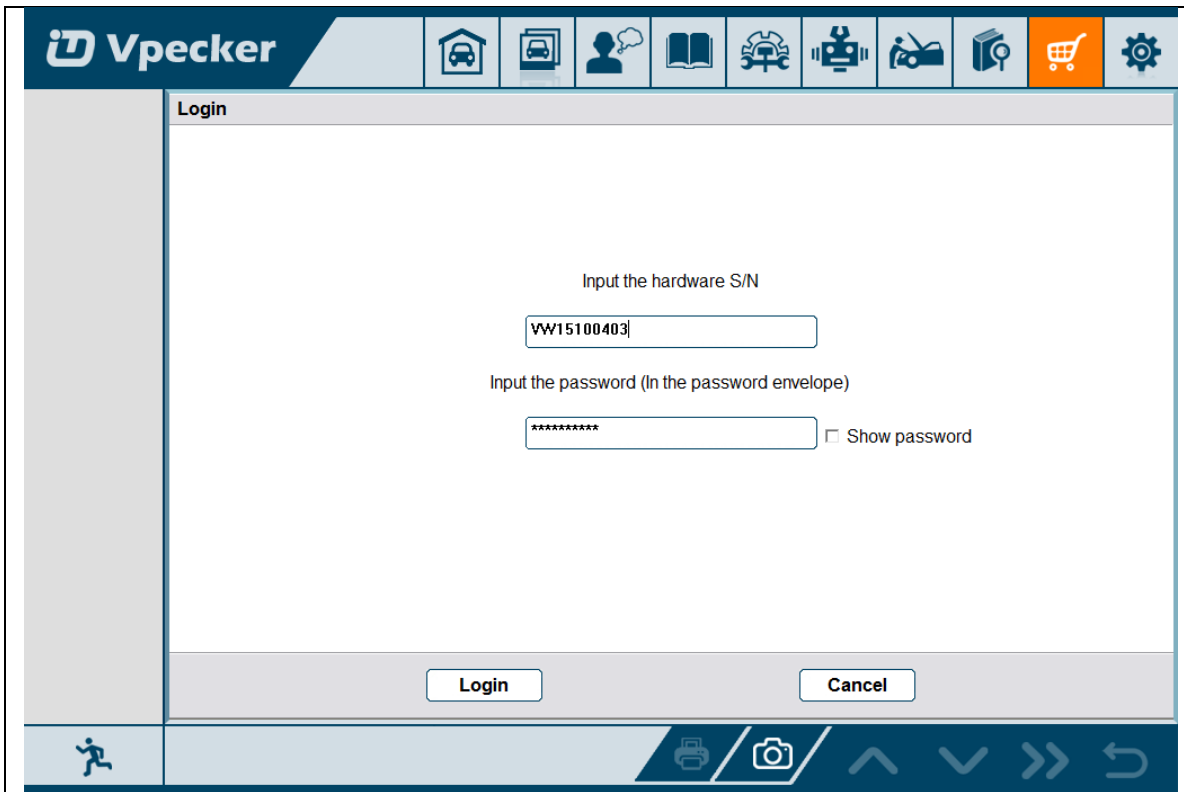
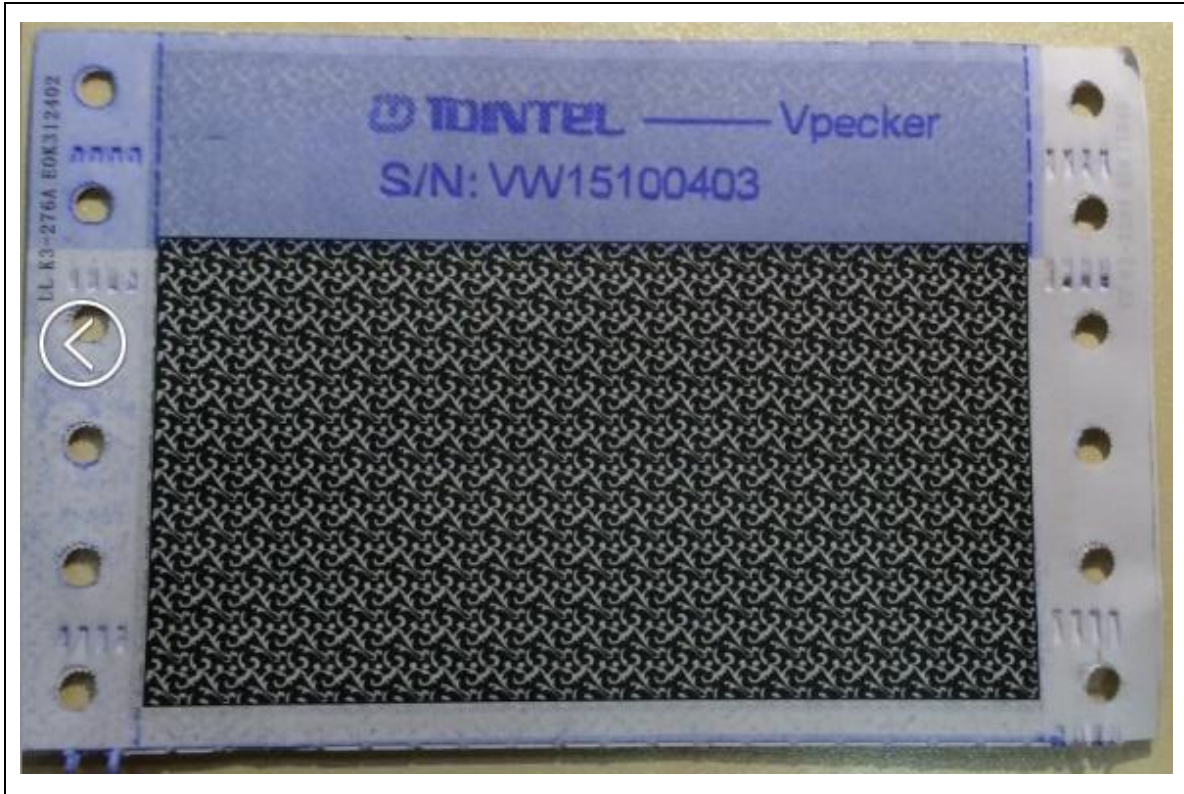


Please click “Online store”.

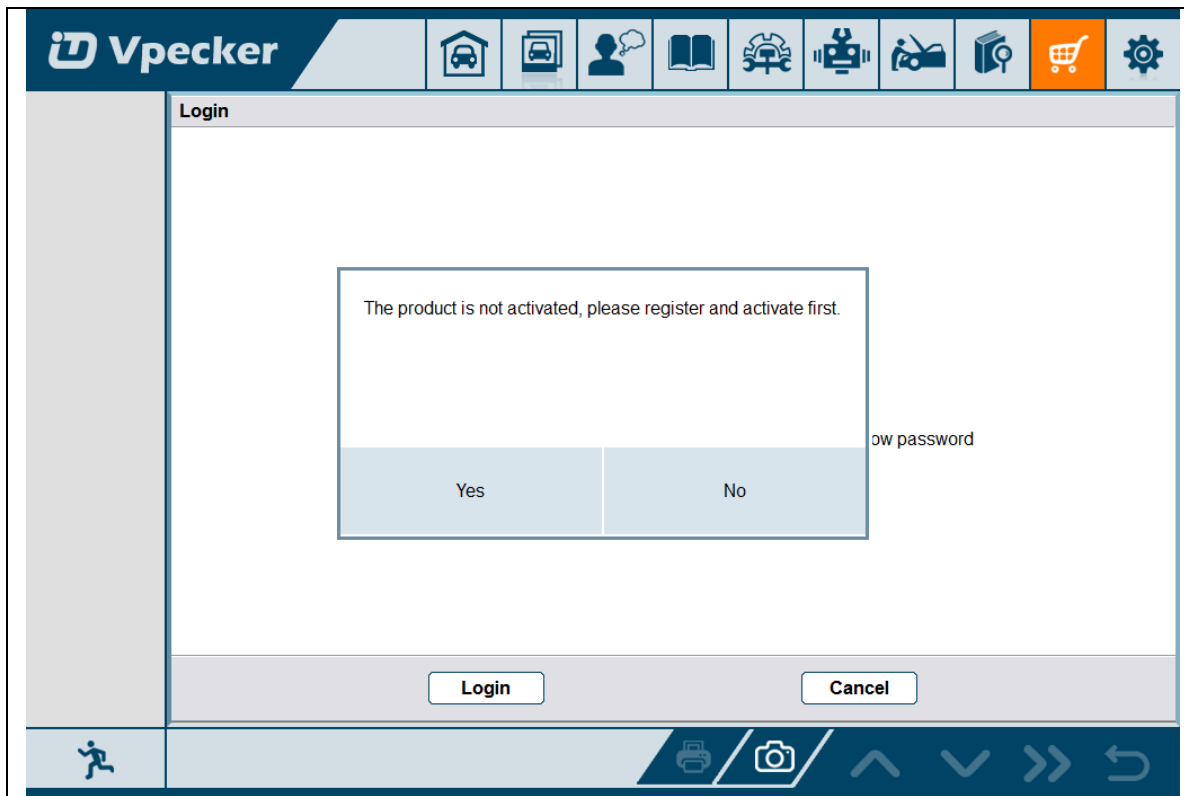


Please enter the S/N number and password get from the envelope, and then click “Login”.

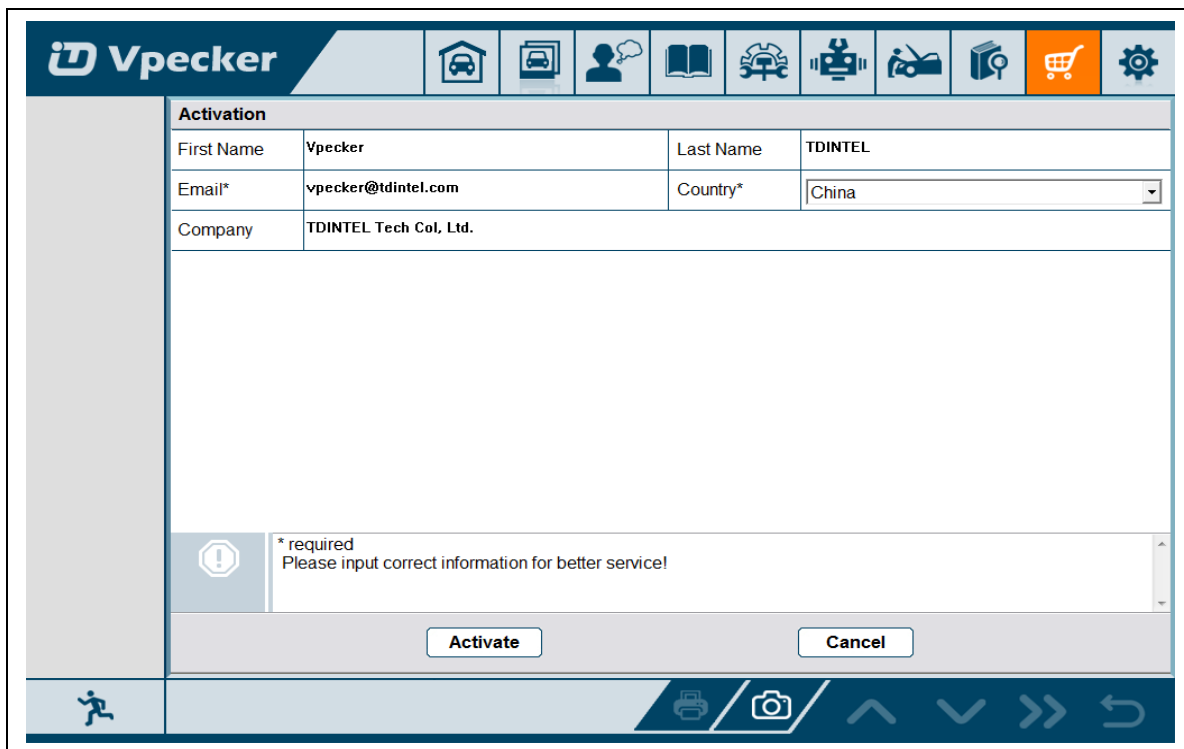




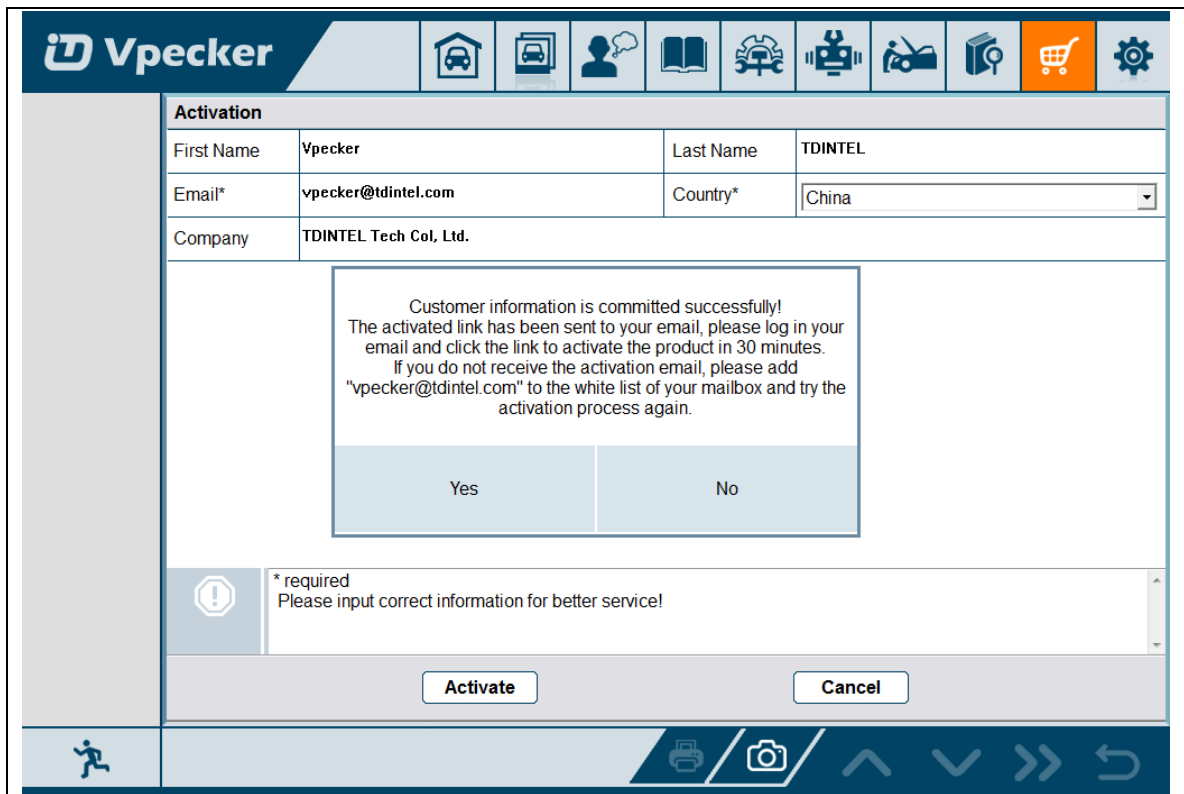
Please click “Login”.



If the product is not activated, please click “Yes”.



Please input your information, the Email address and country are required, and then click “Activate”.



Activation			
First Name	Vpecker	Last Name	TDINTEL
Email*	vpecker@tdintel.com	Country*	China
Company	TDINTEL Tech Co, Ltd.		

Customer information is committed successfully!  
 The activated link has been sent to your email, please log in your email and click the link to activate the product in 30 minutes.  
 If you do not receive the activation email, please add "vpecker@tdintel.com" to the white list of your mailbox and try the activation process again.

\* required  
Please input correct information for better service!

Note:

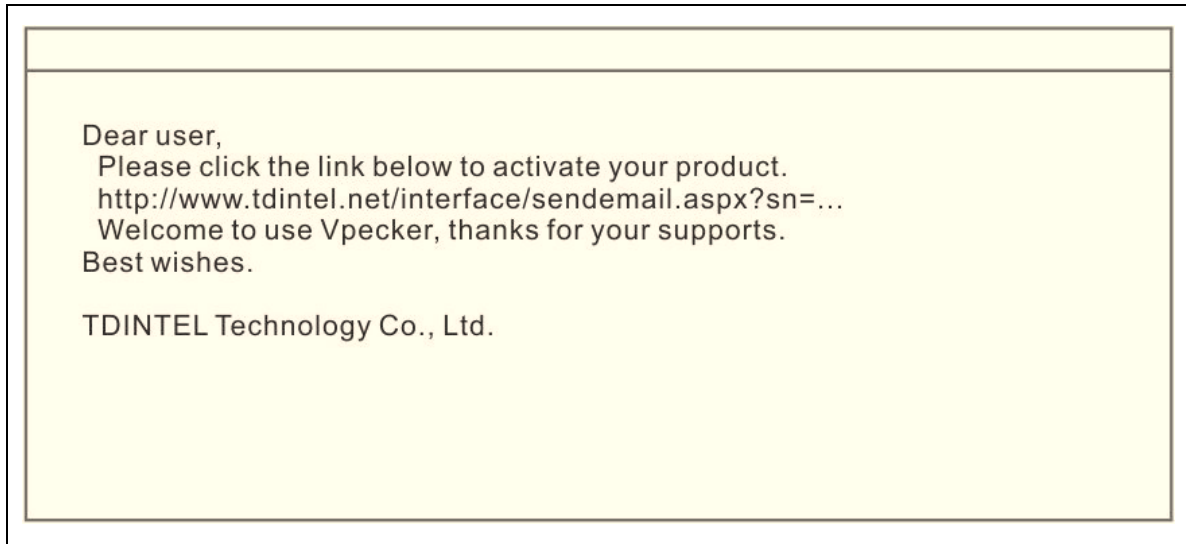
Your email address must be real in order to get the activated link and the further better service from the manufacturer. The software update reminder and the new product release information will be sent to your email.

**If you do not receive the activation email, please add "vpecker@tdintel.com" to the white list of your mailbox and try the activation process again.**

Company name: company name must be filled in and the length is within 250 characters.

Country: please choice your country in the list.

Press "Yes" to confirm your information:



Please click the link to get the confirmation from the manufacturer.



### 3.2 Software downloads

After the activation, please login the online store again, and get the APPs upgrade.

**Vpecker**

Home, Car, User, Book, Gear, Printer, Tractor, Search, Shopping, Settings

**Login**

Input the hardware S/N

Input the password (In the password envelope)

Show password

Navigation: Home, Print, Camera, Up, Down, Right, Left

Please, click “Login” to download the software.

**Vpecker** Shopping Cart Car

<b>DSS</b>	<input type="checkbox"/>		ABARTH V12.0	<b>FREE</b>	<input type="button" value="↓"/>	<input type="checkbox"/>		ACURA V13.0	<b>FREE</b>	<input type="button" value="↓"/>
<b>ESS</b>	<input type="checkbox"/>		ALFA ROMEO V13.1	<b>FREE</b>	<input type="button" value="↓"/>	<input type="checkbox"/>		ASIAGM V13.0	<b>FREE</b>	<input type="button" value="↓"/>
<b>MSS</b>	<input type="checkbox"/>		ASTON MARTIN V12.0	<b>FREE</b>	<input type="button" value="↓"/>	<input type="checkbox"/>		AUDI V12.0	<b>FREE</b>	<input type="button" value="↓"/>
	<input type="checkbox"/>		BENTLEY V12.0	<b>FREE</b>	<input type="button" value="↓"/>	<input type="checkbox"/>		BENZ V12.1	<b>FREE</b>	<input type="button" value="↓"/>
	<input type="checkbox"/>		BMW V12.2	<b>FREE</b>	<input type="button" value="↓"/>	<input type="checkbox"/>		BUGATTI V12.0	<b>FREE</b>	<input type="button" value="↓"/>

Navigation: Home, Up, Down, Right, Left

Vpecker			
DSS	<input checked="" type="checkbox"/> <b>ABARTH</b> V12.0 Update successful	<input checked="" type="checkbox"/> <b>ACURA</b> V13.0	
ESS	<input checked="" type="checkbox"/> <b>ALFA ROMEO</b> V13.1 Waiting for download	<input checked="" type="checkbox"/> <b>ASIAGM</b> V13.0 Waiting for download	
MSS	<input checked="" type="checkbox"/> <b>ASTON MARTIN</b> V12.0 Waiting for download	<input checked="" type="checkbox"/> <b>AUDI</b> V12.0 Waiting for download	
	<input checked="" type="checkbox"/> <b>BENTLEY</b> V12.0 Waiting for download	<input checked="" type="checkbox"/> <b>BENZ</b> V12.1 Waiting for download	
	<input checked="" type="checkbox"/> <b>BMW</b> V12.2 Waiting for download	<input checked="" type="checkbox"/> <b>BUGATTI</b> V12.0 Waiting for download	
<input type="checkbox"/>			

Vpecker			
DSS	<input type="checkbox"/> <b>ACURA PRO</b> V13.0	<input type="checkbox"/> <b>CHERY PRO</b> V18.0	
ESS	<input type="checkbox"/> <b>EMGRAND PRO</b> V18.0	<input type="checkbox"/> <b>ENGLON PRO</b> V18.0	
MSS	<input type="checkbox"/> <b>GEELY PRO</b> V18.0	<input type="checkbox"/> <b>GLEAGLE PRO</b> V18.0	
	<input type="checkbox"/> <b>HONDA PRO</b> V13.0	<input type="checkbox"/> <b>LEXUS PRO</b> V12.1	
	<input type="checkbox"/> <b>LIFAN PRO</b> V18.0	<input type="checkbox"/> <b>MITSUBISHI PRO</b> V18.0	
<input type="checkbox"/>			



There are three modes for downloading, one by one and one-click. It may take a long time to download all the software, due to customers' network speed reason.

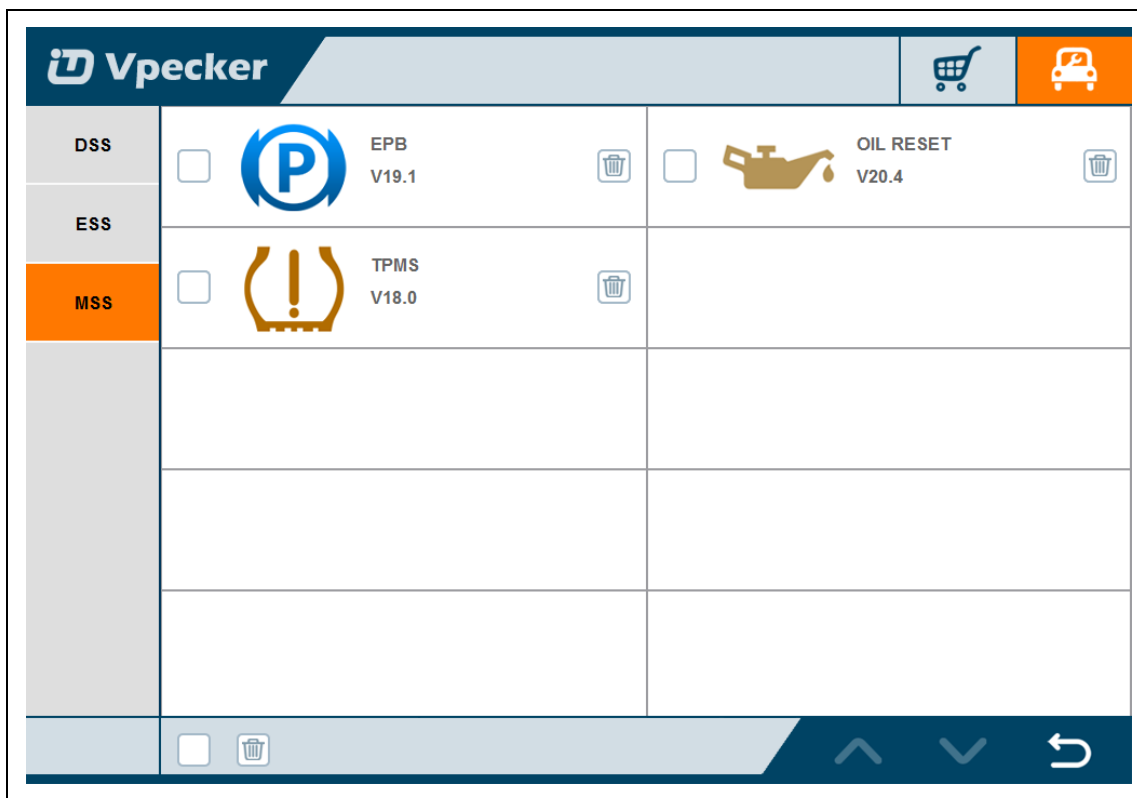
### 3.3 Software management

Users can delete vehicle software here. You can delete one by one or all-selected delete.

Vpecker			
DSS	<input type="checkbox"/> CHRYSLER V13.0	<input type="checkbox"/> FORD(AMERICA) V13.0	
ESS	<input type="checkbox"/> GM V12.0	<input type="checkbox"/> JEEP V13.0	
MSS	<input type="checkbox"/> SCION V12.1	<input type="checkbox"/> ACURA V13.0	
	<input type="checkbox"/> ASIAGM V13.0	<input type="checkbox"/> DAEWOO V12.0	
	<input type="checkbox"/> DAIHATSU V12.0	<input type="checkbox"/> FUSO V12.0	
	<input type="checkbox"/>		

Vpecker			
DSS	<input type="checkbox"/> ACURA PRO V13.0	<input type="checkbox"/> CHERY PRO V18.0	
ESS	<input type="checkbox"/> EMGRAND PRO V18.0	<input type="checkbox"/> ENGLON PRO V18.0	
MSS	<input type="checkbox"/> GEELY PRO V18.0	<input type="checkbox"/> GLEAGLE PRO V18.0	
	<input type="checkbox"/> HONDA PRO V13.0	<input type="checkbox"/> LEXUS PRO V12.1	
	<input type="checkbox"/> LIFAN PRO V18.0	<input type="checkbox"/> MITSUBISHI PRO V18.0	
	<input type="checkbox"/>		





## 4. Software introduction

Run VPECKER, The screen will show:

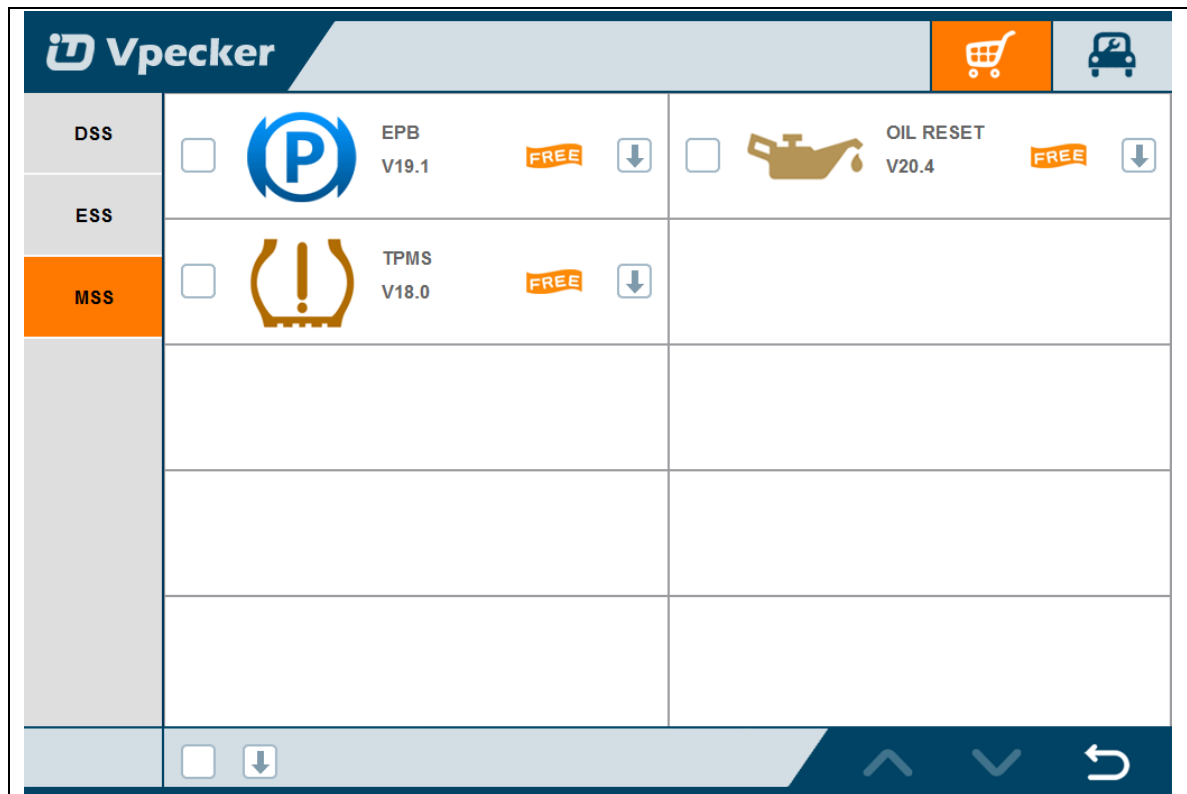


## 4.1 Online store

### Features

- Automatic Wi-Fi updates available in new software releases by smart upgrade mode.
- Wi-Fi internet capability allows for wireless access throughout the workshop.
- Extremely easy-to-use with touch-screen operation and intuitive operation in the windows.

Vpecker			
DSS	<input type="checkbox"/> ABARTH V12.0 <b>FREE</b>	<input type="checkbox"/> ACURA V13.0 <b>FREE</b>	
ESS	<input type="checkbox"/> ALFA ROMEO V13.1 <b>FREE</b>	<input type="checkbox"/> ASIAGM V13.0 <b>FREE</b>	
MSS	<input type="checkbox"/> ASTON MARTIN V12.0 <b>FREE</b>	<input type="checkbox"/> AUDI V12.0 <b>FREE</b>	
	<input type="checkbox"/> BENTLEY V12.0 <b>FREE</b>	<input type="checkbox"/> BENZ V12.1 <b>FREE</b>	
	<input type="checkbox"/> BMW V12.2 <b>FREE</b>	<input type="checkbox"/> BUGATTI V12.0 <b>FREE</b>	
		<input type="checkbox"/>	
Vpecker			
DSS	<input type="checkbox"/> ACURA PRO V13.0 <b>FREE</b>	<input type="checkbox"/> CHERY PRO V18.0 <b>FREE</b>	
ESS	<input type="checkbox"/> EMGRAND PRO V18.0 <b>FREE</b>	<input type="checkbox"/> ENGLON PRO V18.0 <b>FREE</b>	
MSS	<input type="checkbox"/> GEELY PRO V18.0 <b>FREE</b>	<input type="checkbox"/> GLEAGLE PRO V18.0 <b>FREE</b>	
	<input type="checkbox"/> HONDA PRO V13.0 <b>FREE</b>	<input type="checkbox"/> LEXUS PRO V12.1 <b>FREE</b>	
	<input type="checkbox"/> LIFAN PRO V18.0 <b>FREE</b>	<input type="checkbox"/> MITSUBISHI PRO V18.0 <b>FREE</b>	
		<input type="checkbox"/>	



## 4.2 Diagnosis service system (DSS)

### 4.2.1 Features

- Extensive vehicle coverage for more than 75 US domestic, European, Asian, Australian and Chinese vehicles makes.
- Complete function capability including live data, ECU programming and so many others.
- Unparalleled OBDII functionalities-support ALL 5 OBDII protocols and ALL 10 test modes.
- Can check out the year and model of the vehicles automatically and quickly.
- The genuine Windows 8 and Windows 10 operating systems allows for more stable performances, better compatibility and expandability

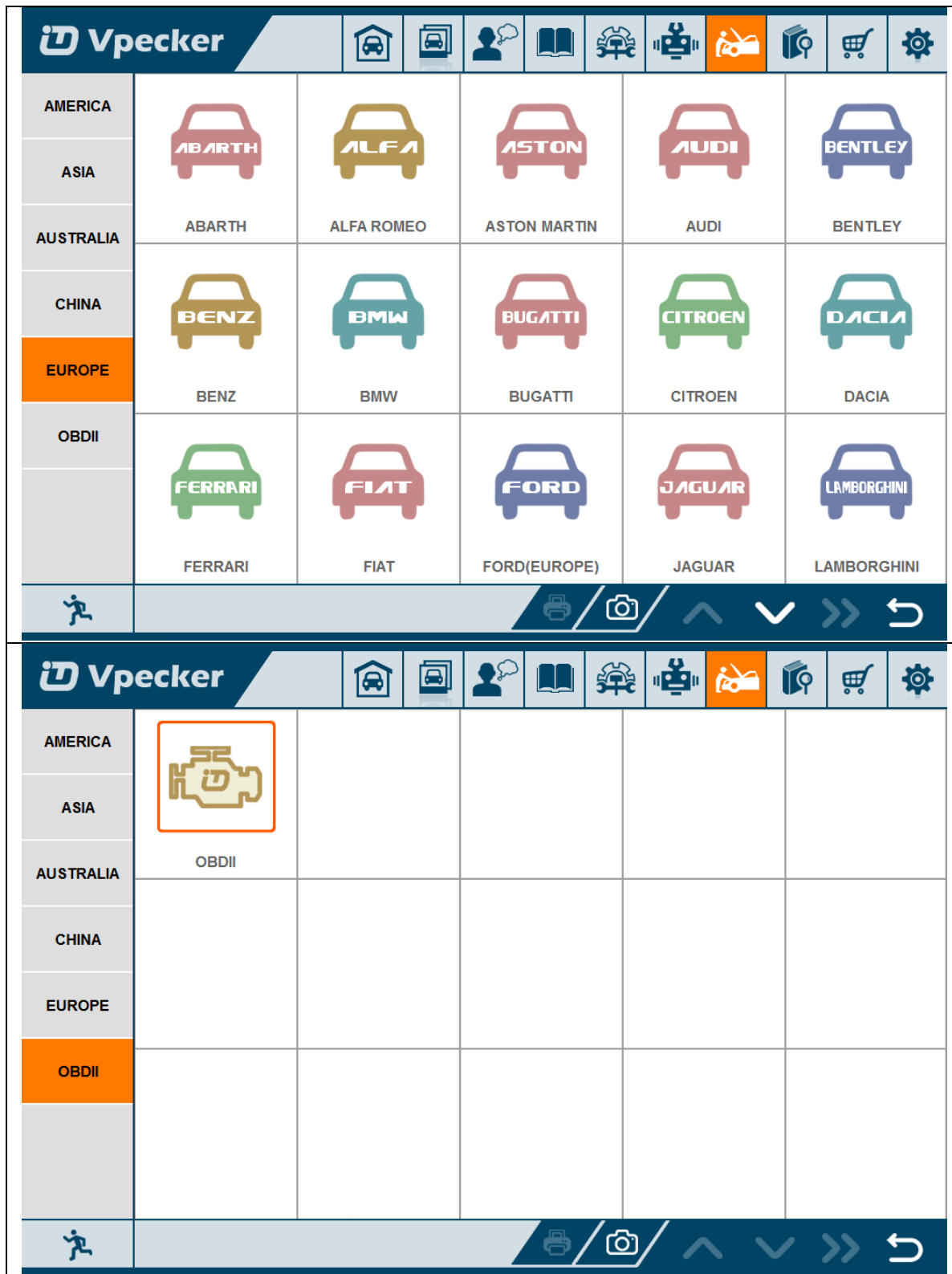
Vpecker

AMERICA					
ASIA	CHRYSLER	FORD(AMERICA)	GM	JEEP	SCION
AUSTRALIA					
CHINA					
EUROPE					
OBDII					

Vpecker

AMERICA					
ASIA	ACURA	ASIAGM	DAEWOO	DAIHATSU	FUSO
AUSTRALIA					
CHINA					
EUROPE	HONDA	HYUNDAI	INFINITI	ISUZU	KIA
OBDII					
	LEXUS	MAZDA	MITSUBISHI	NISSAN	PERODUA

AMERICA					
ASIA					
<b>AUSTRALIA</b>	FORD(AUSTRALIA)	HOLDEN			
CHINA					
EUROPE					
OBDII					
AMERICA					
ASIA					
AUSTRALIA	BYD	CHANGAN	CHANGHE	CHERY	EMGRAND
<b>CHINA</b>					
EUROPE	ENGLON	FOTON	GEELY	GLEAGLE	GWM
OBDII					
	HBSH	HUACHEN	LIFAN	WULING	YUAN



#### 4.2.2 Vehicle coverage

US domestic: CHRYSLER, FORD, GM, JEEP, SCION, etc.

European: ABARTH, ALFA, ASTON, AUDI, BENTLEY, BENZ, BMW, BUGATTI, CITROEN, DACIA, FERRARI, FIAT, FORDEU, JAGUAR, LAMBORGHINI, LANCIA, LANDROVER, MASERTI, MINI, OPEL, PEUGEOT, PORSCHE, RENAULT, SAAB, SEAT, SKODA, SMART, VAUXHALL, VOLVO, VW, etc.

Asian: ACURA, ASIAGM, DAEWOO, DAIHATSU, HONDA, HYUNDAI, INFINITI, ISUZU, KIA, LEXUS, MAZDA, MITSUBISHI, NISSAN, PERODUA, PROTON, SSANGYONG, SUBARU, SUZUKI, TOYOTA, etc.

Australian: HOLDEN and FORD(AUSTRALIA).

China: BYD, CHANGAN, CHANGHE, CHERY, EMGRAND, ENGLON, FOTON, GEELY, GLEAGLE, GWM, HBSH, HUACHEN, LIFAN, WULING, YUAN, etc.

OBDII vehicle: CHRYSLER, FORD, GM, TOYOTA, LEXUS, HONDA, HYUNDAI, KIA, MAZDA, MITSUBISHI, NISSAN, SUBARU, SUZUKI, ABARTH, ASTON MARTIN, BUGATTI, FERRARI, LAMBORGHINI, MASERTI, BENZ, BMW, VW, AUDI, SEAT, SKODA, PORSCHE, JAGUAR, LANDROVER, VOLVO, SAAB, ALFA, etc.

### **4.2.3 System coverage**

ME-Motor electronics, CDI-Common Rail Diesel Injection, ETC-Electronic transmission control, ESM-Electronic selector module, SBC- Sensotronic Brake Control, ESP-Electronic stability program, BAS-Brake assist, Suspension, TPC-Tire pressure monitor, Airbag, CGW-Central gateway, EIS-Electronic ignition switch, OCP-Overhead control panel, UCP-Upper control panel, XALWA-Xenon headlamp, HRA-Headlamp range control, ATA-Anti-theft alarm system, IC-Instrument cluster, ASSYST-Active Service System, SCM-Steering column module, EPS-Electrical power steering, PTS- Parktronic system, EPB-Electric parking brake, COMAND/AUDIO, CD/DVD, TV tuner, CTEL-Cellular telephone, DCM-Door control module, ESA driver-Electric seat adjustment driver, ESA passenger-Electric



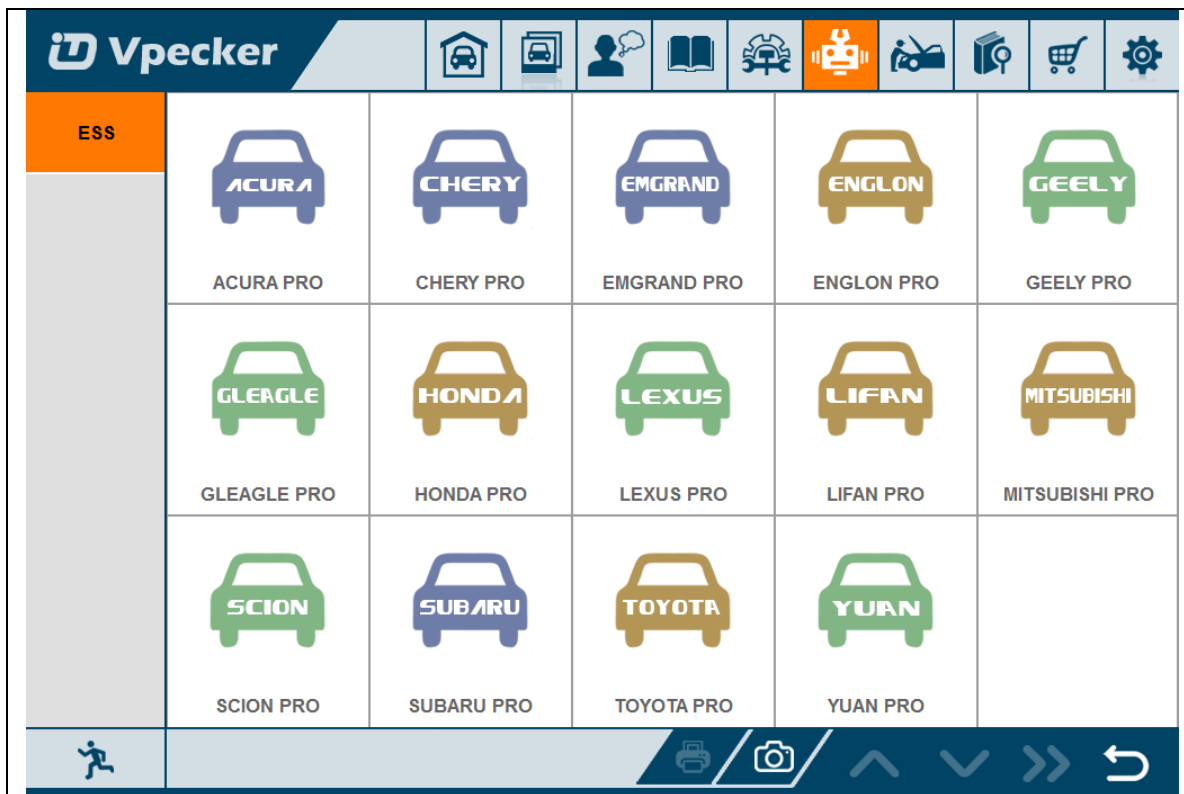
seat adjustment passenger, AAC-Air conditioning, WSS-Weight sensor system, SVMCM-Special vehicle multifunction control module, etc.

#### 4.2.4 Function coverage

Quick Test, Read ECU Info., Read DTCs, Erase DTCs, Clear learning value, Data Stream, Actuators, Read freeze frame data, Read/Write VIN, Basic Reset, Control unit adaptations, Throttle adaptations, Air bleeding, Level calibration, Theft alarm Reset, Key programming, Oil change, Idle speed learning, Idle speed Adjustment, Ignition timing adjustment, Camshaft timing control learning, Maintenance functions, ECU Initial startup, ECU initialization, etc.

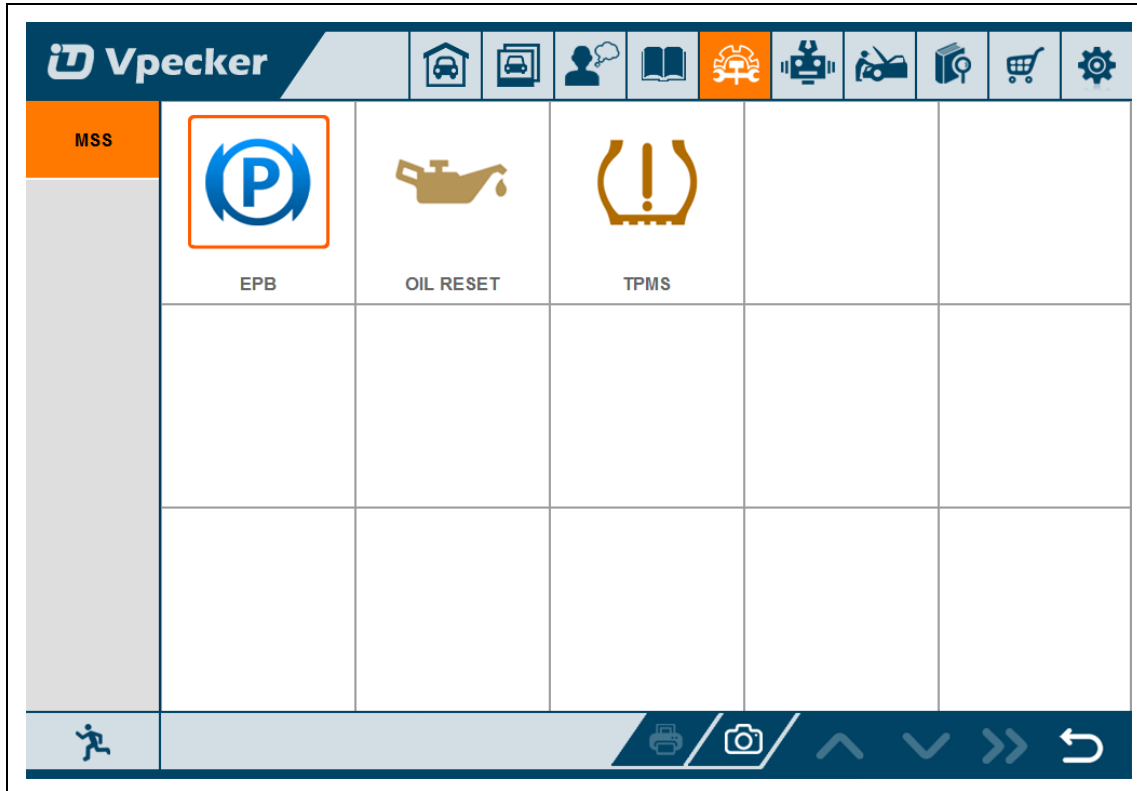
#### 4.3 Expert service system (ESS)

Expert service system, according to customers' requirement list, focus on special functions such as Oil change, Idle speed learning, Idle speed Adjustment, Air bleeding, Level calibration, Throttle adaptations, Steering Angle Sensor Calibration, EPB Reset, DPF Reset, ECU Initial startup, ECU initialization, etc.



## 4.4 Maintenance service system (MSS)

Maintenance service focus on daily maintenance special functions, such as Oil reset, EPB, TPMS, ABS BLEEDING, DPF, ETS, BATTERY, INJECTOR.



## 4.5 Settings

### 4.5.1 Language

Choose the language you need, as the picture shows:

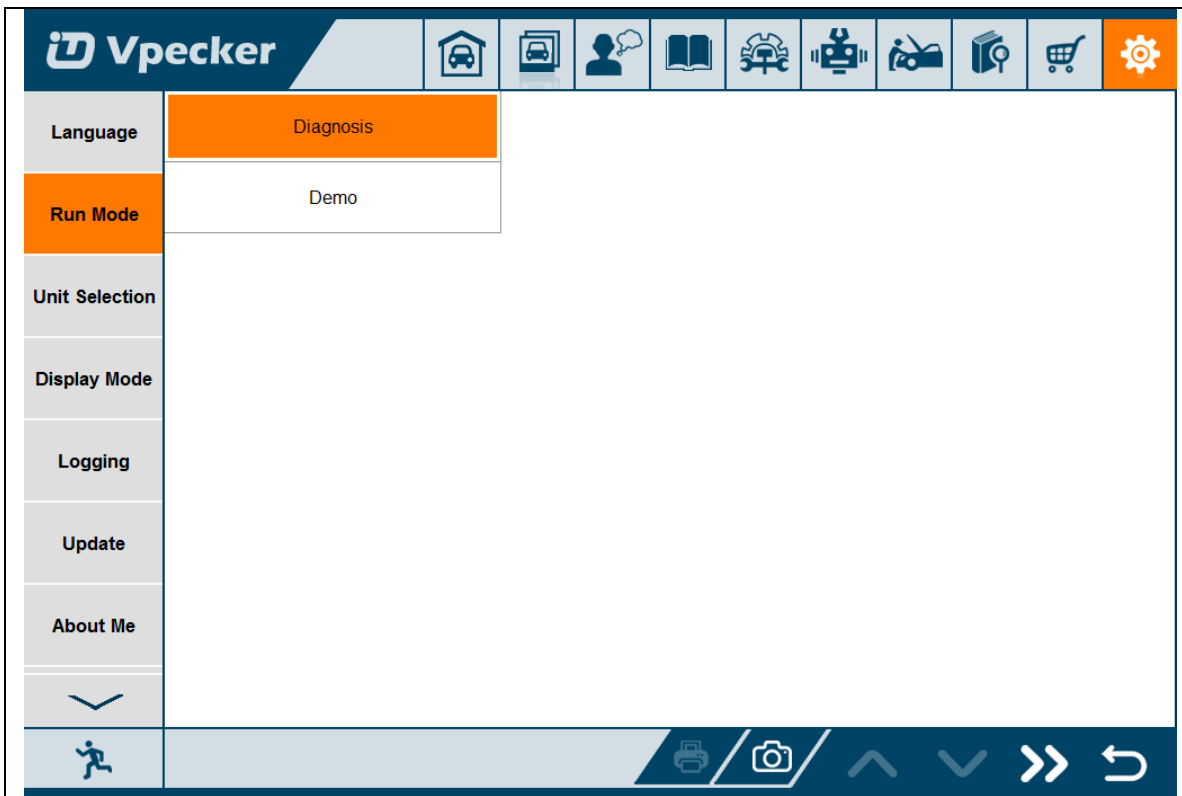
Category	Language 1	Language 2	Language 3
Language	Arabic(العربية)	Italian(italiano)	Bosnian(بوسني)
Run Mode	Czech(Česká)	Japanese(日本語)	Thai(ไทย)
Unit Selection	German(Deutsche)	Korean(한국어)	Turkish(Türk)
	Dutch(Nederlandse)	Polish(polski)	Chinese Traditional(繁体字中国語)
Display Mode	English	Portuguese(Português)	Vietnamese(Việt nam)
Logging	Finnish(Suomen)	Romanian(Romana)	
Update	French(français)	Russian(Россия)	
About Me	Hungarian(magyar)	Swedish(Svenska)	
	Indonesian(Indonesia)	Spanish(Español)	

Language coverage: Supporting more 25 languages, including Chinese (Simplified), English, Chinese (Traditional), Japanese, German, Russian, French, Italian, Spanish, Portuguese, Polish, Turkish, Dutch, Hungarian, Korean, Czech, Arabic, Indonesian, Persian, Thai, Vietnamese, Finnish, Swedish, Romanian, Bosnian, etc.

Note: It will take English by default.

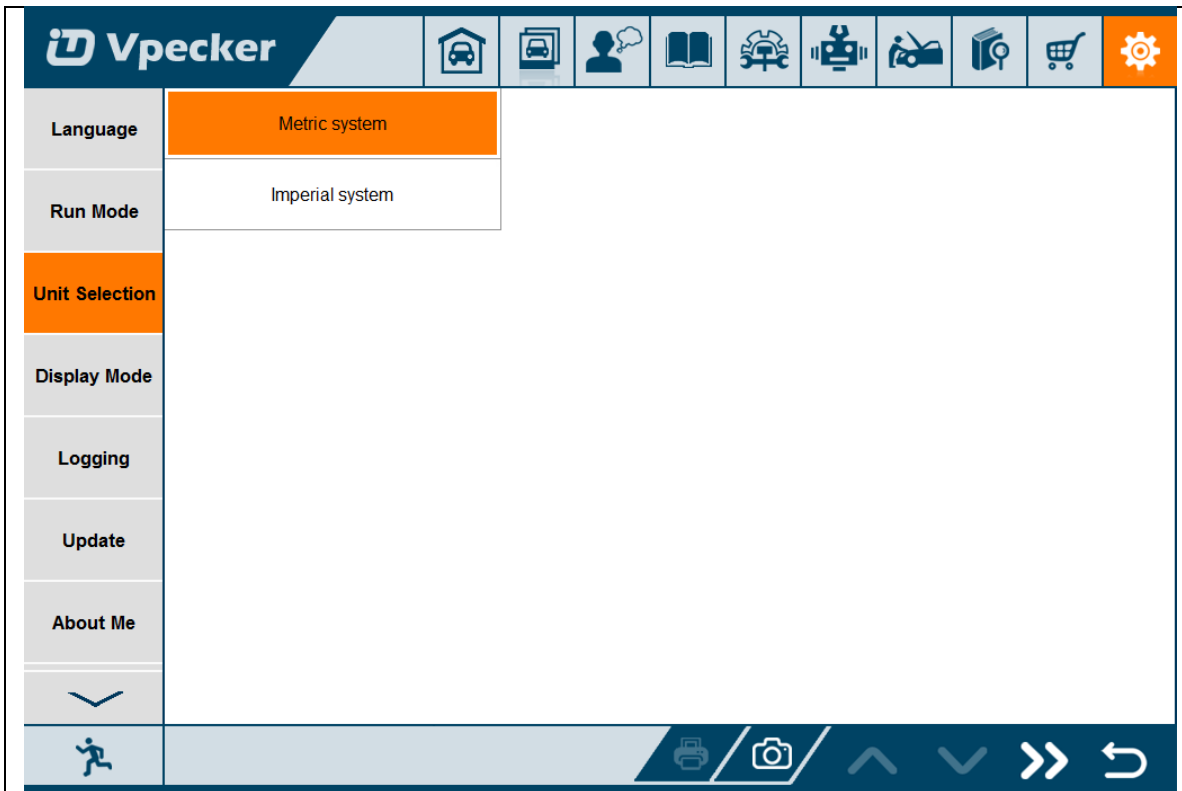
#### 4.5.2 Run mode

It has Demo, so even VPECKER is not connected, it can simulate how VPECKER works. As the picture shows:



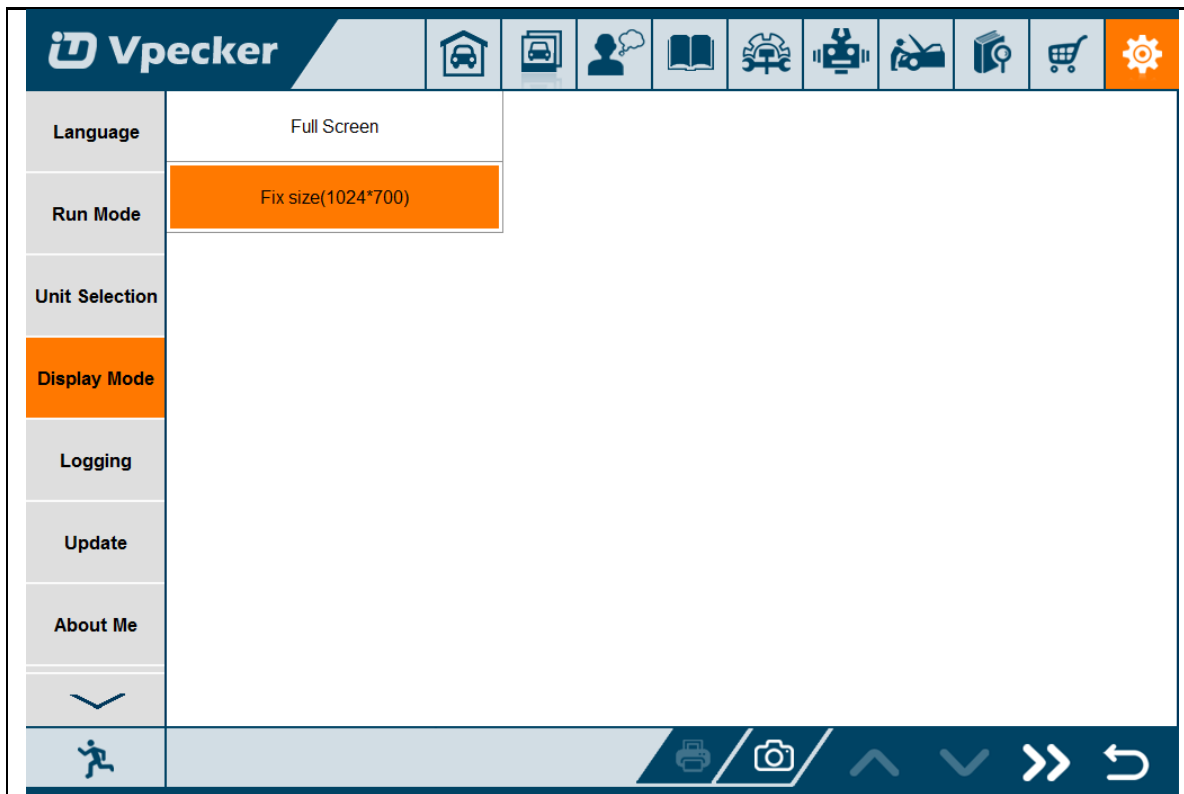
### 4.5.3 Unit selection

Unit switch between Metric and Imperial system:



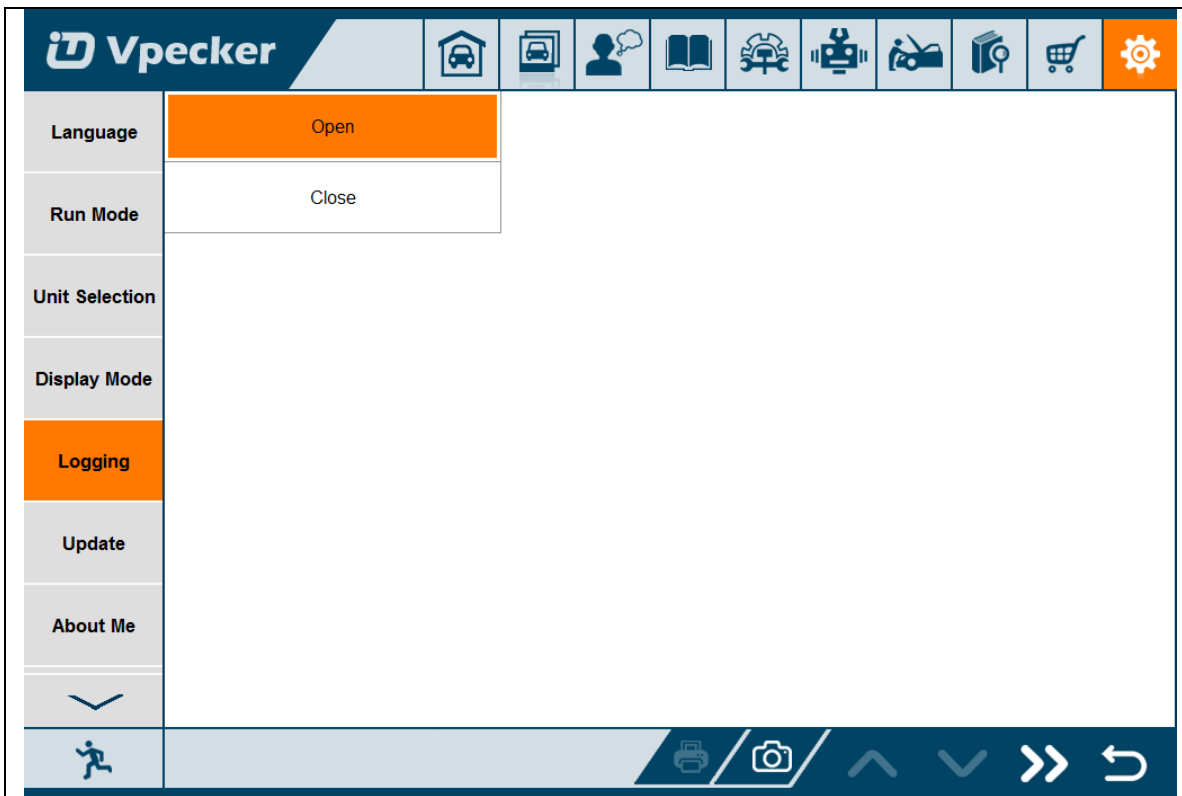
#### 4.5.4 Display mode

Display modes between Full Screen and Fixed Size(1024 x 700):



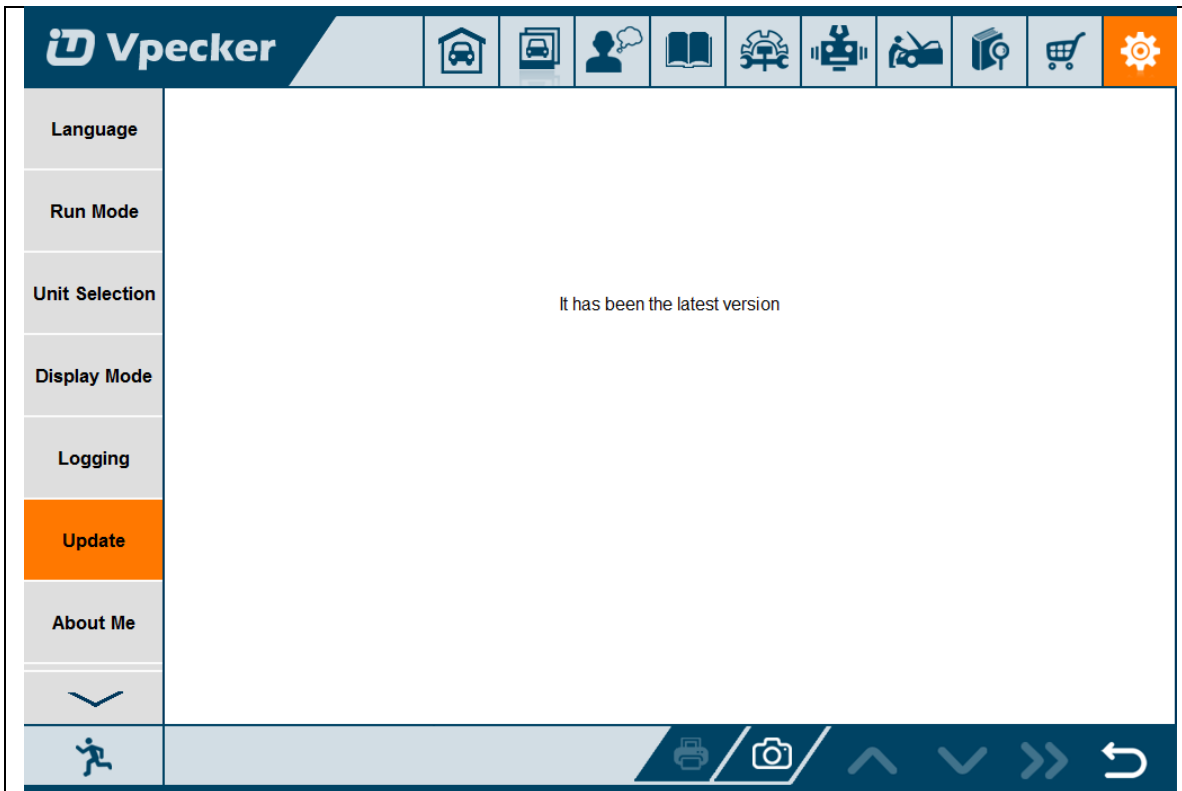
#### 4.4.5 Logging

Logging function is available; it can log the data of vehicle communication.



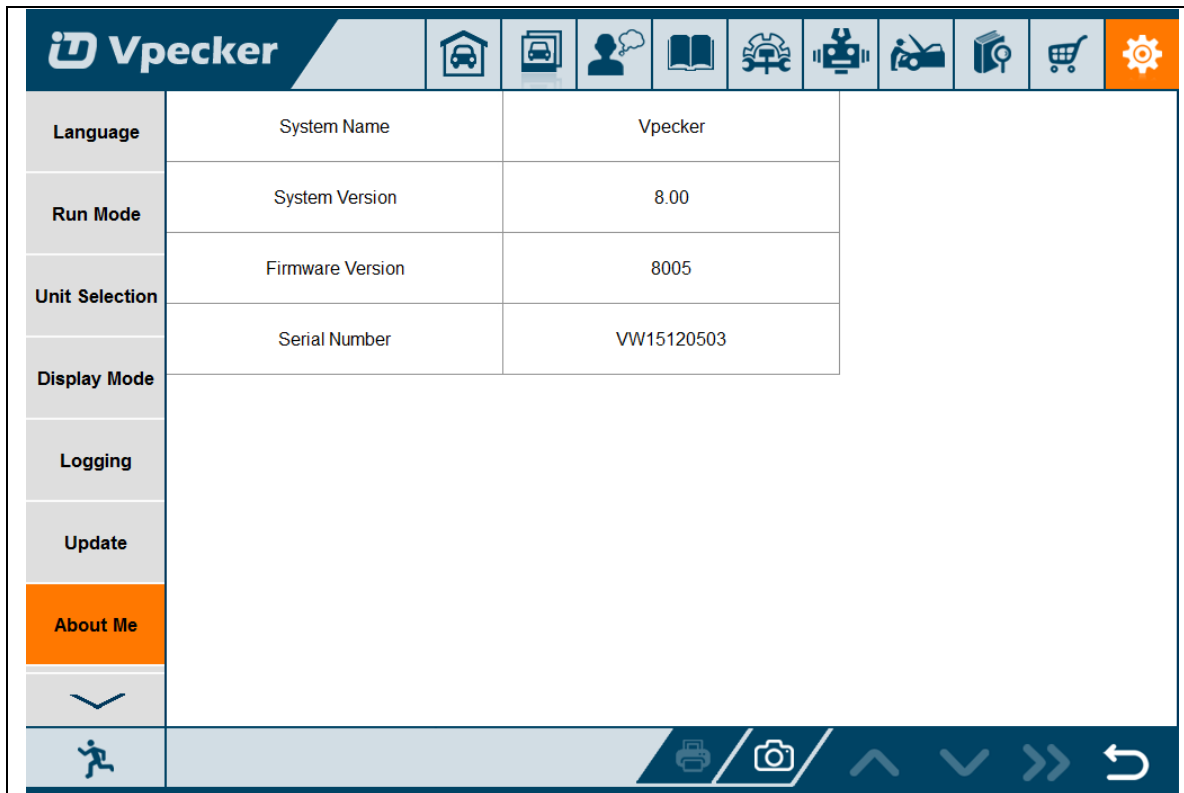
#### 4.5.6 Update

If there is a new version, it can automatically prompt to update.



#### 4.5.7 About me

Automatically identify VPECKER and VPECKER version information, when connection has problem (Wi-Fi or Bluetooth), and it can't read VPECKER Hardware version, usually, it shows as "Unknown" or "--"; If the connection is OK, it shows hardware version. As the picture shows:



#### 4.5.8 Skin Setting



Here you can change the background color.

#### 4.6 DTC query

DTC query function is a DIY function, users can query, modify and create OBD DTCs by themselves requirement in local DTCs, and users can synchronize to TDINTEL company cloud server thought the internet too.



**AUTO DTC QUERY SYSTEM**

Please input a DTC code and click the search button

## P0123

**Systems**  
P=Powertrain  
C=Chassis  
B=Body  
U=Network

**Code Type Generic(SAE):**  
P0, P2, P34-39  
B0, B3  
C0, C3  
U0, U3  
**Manufacturer Specific:**  
P1, P30-P33  
B1, B2  
C1, C2  
U1, U2

**Sub-systems:**  
1=Fuel and Air Metering  
2=Fuel and Air Metering  
3=Ignition System or Engine Misfire  
4=Auxiliary Emission Controls  
5=Vehicle Speed Control and Idle Controls  
6=Computer Output Circuits  
7=Transmission Controls  
8=Transmission Controls

Identifying specific malfunctioning section of the systems

🏃 ⬆ ⬇ 👤

**AUTO DTC QUERY SYSTEM**

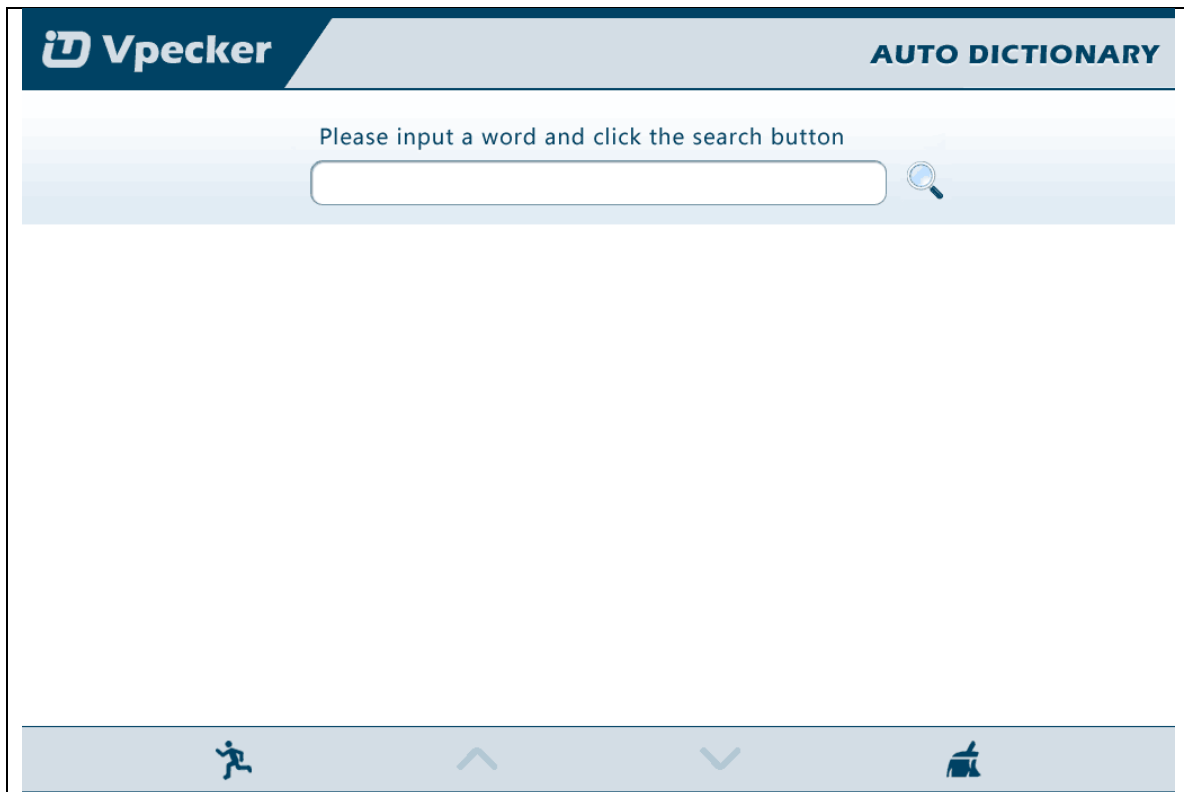
Please input a DTC code and click the search button

DTC	Vehicle	Description
P1111	GM_HOLDEN	Intake air temperature sensor signal high
P1111	FORD	Code unallocated
P1111	JAGUAR	Code unallocated
P1111	BMW	Radiator outlet coolant temperature sensor signal low
P1111	VOLVO	Ambient air temperature sensor signal error
P1111	ISUZU	Intake air temperature sensor signal high
P1111	SUBARU	MAP/Barometric pressure sensor signal high
P1111	MAZDA	Code unallocated
P1111	HONDA	Intake air temperature sensor signal high
P1111	TOYOTA	Converter clutch override sensor signal shorted
P1111	NISSAN	Intake variable cam timing solenoid circuit malfunction

🏃 ⬆ ⬇ 👤

## 4.7 Dictionary

Dictionary function is a DIY function, users can query, modify and create AUTO terms by themselves requirement in local terms, and users can synchronize to TDINTEL company cloud server through the internet too.



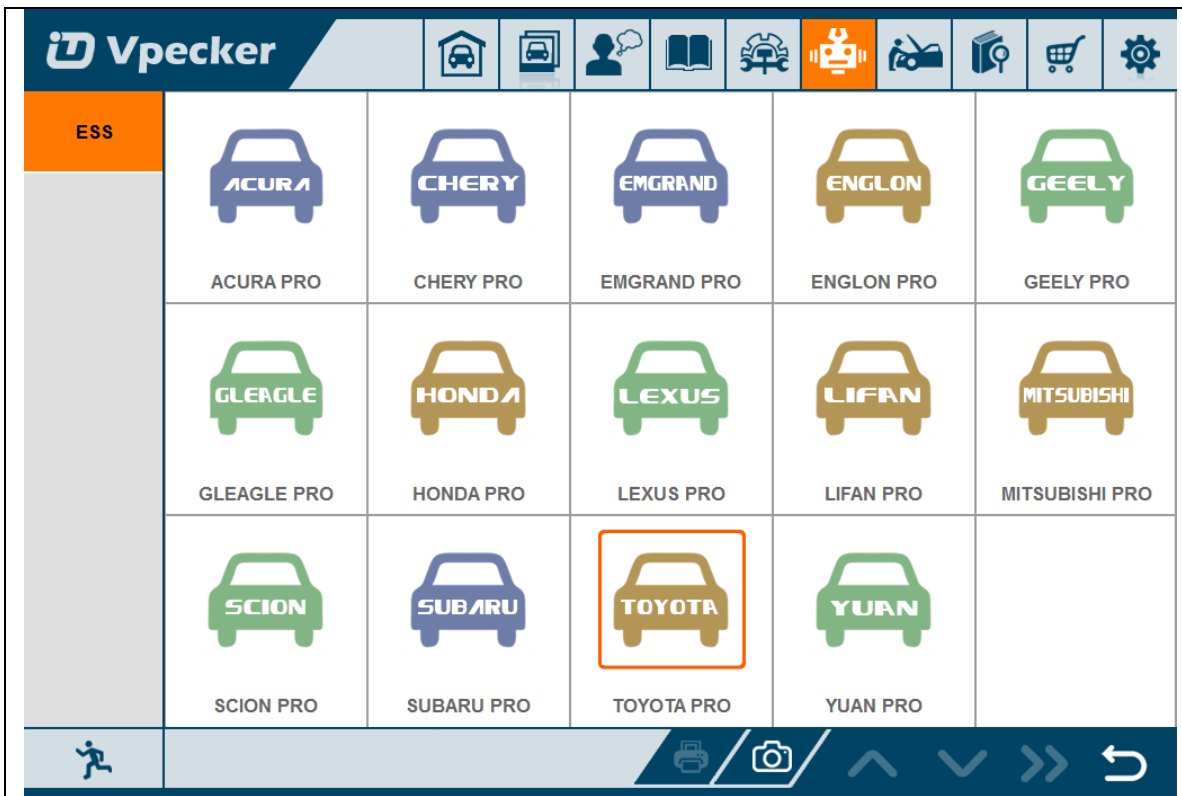
## 4.8 Example

### 4.8.1 Communication

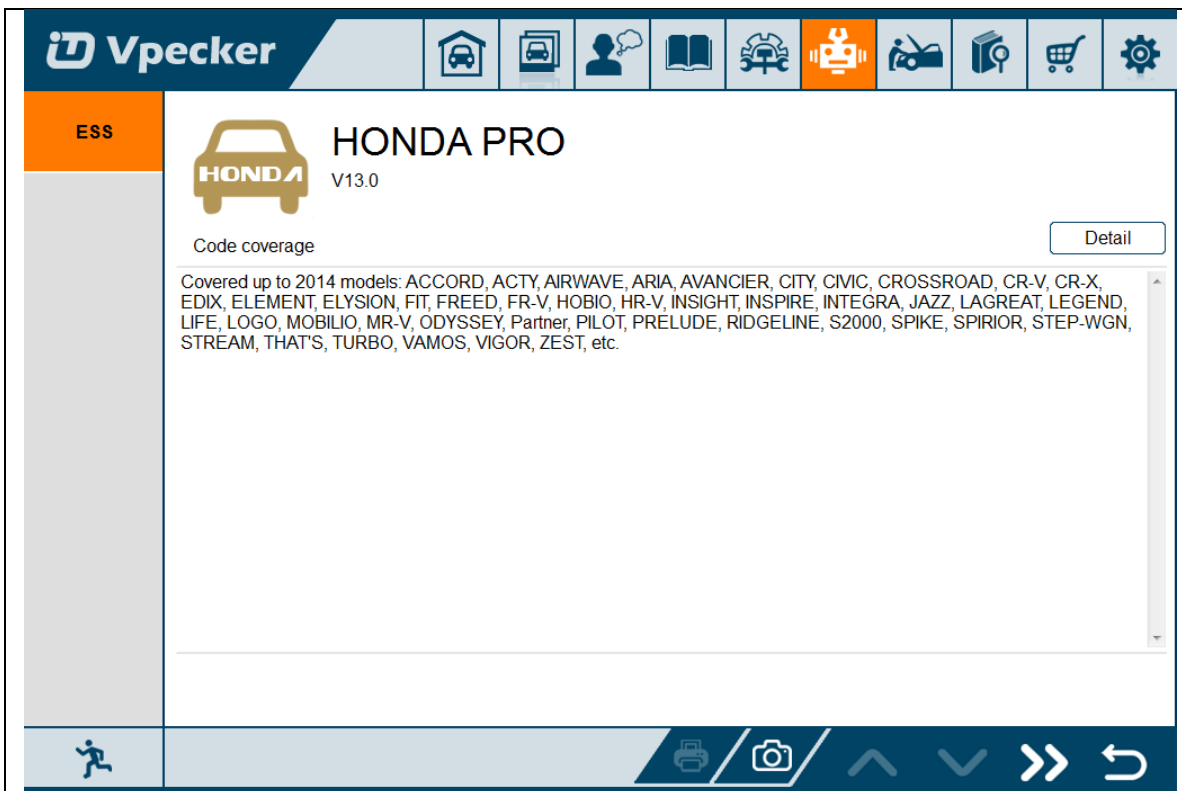
Please connect VPECKER with the car. After connection, the indication light turn on red.

Please check the connection of Wi-Fi or Bluetooth, if connect successfully, the indication light will turn to blue.

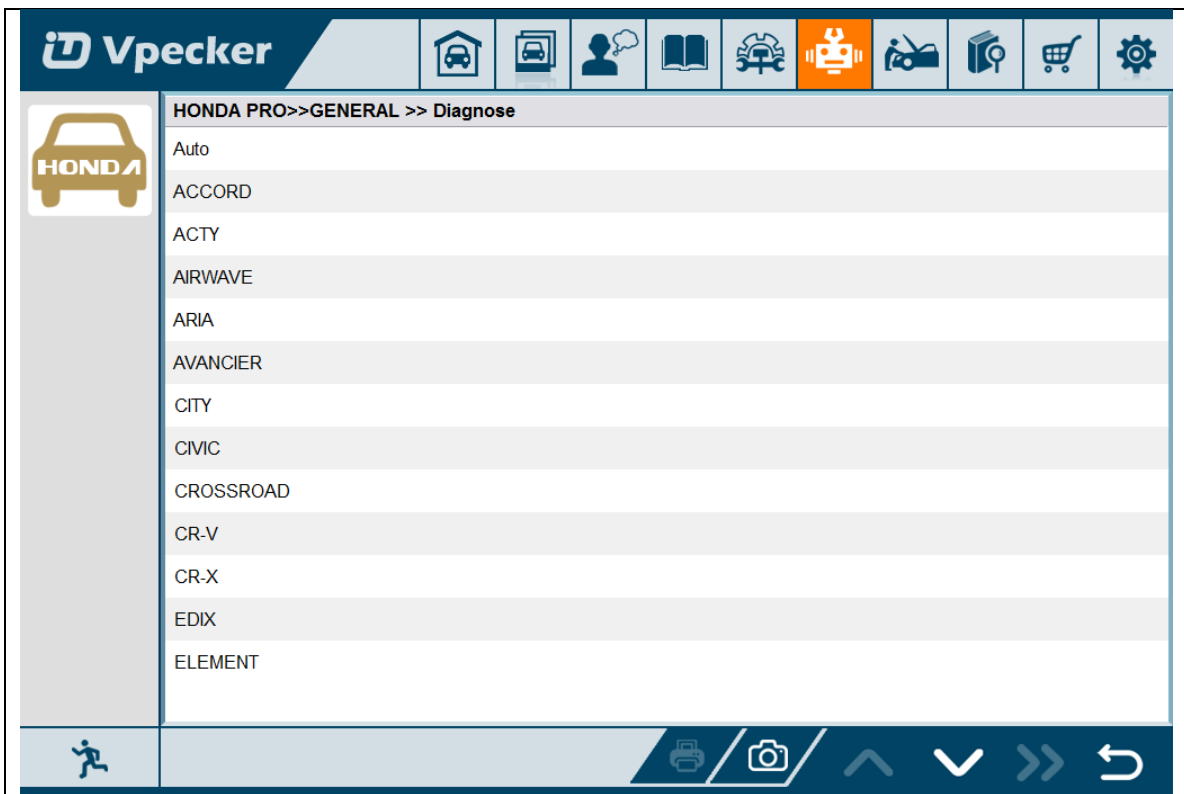
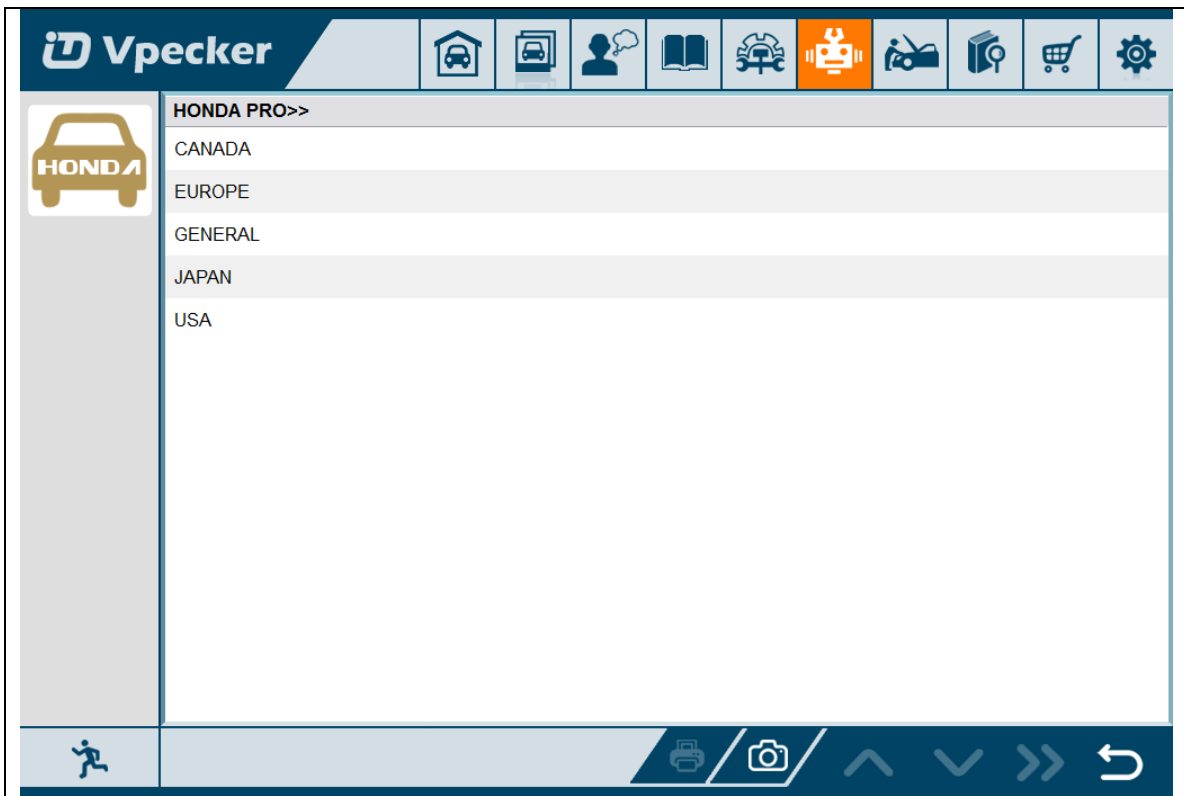
Run the VPECKER, and start to diagnose.

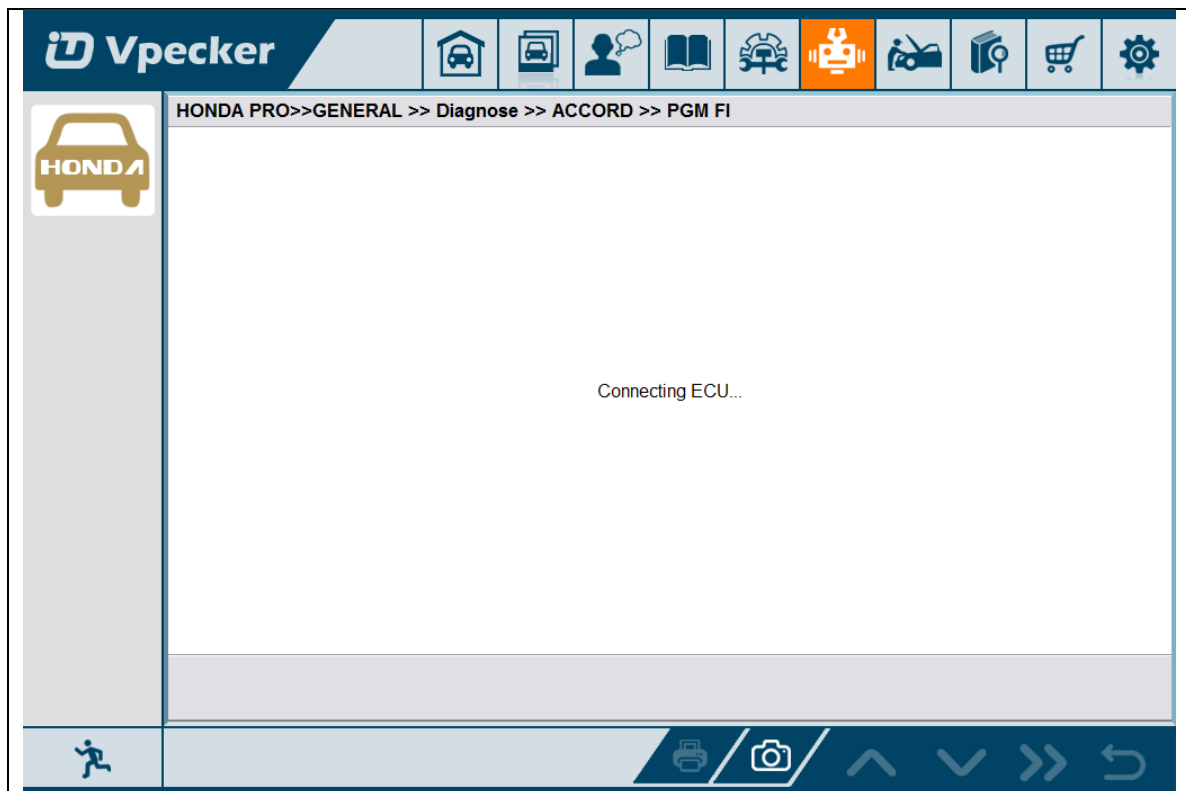
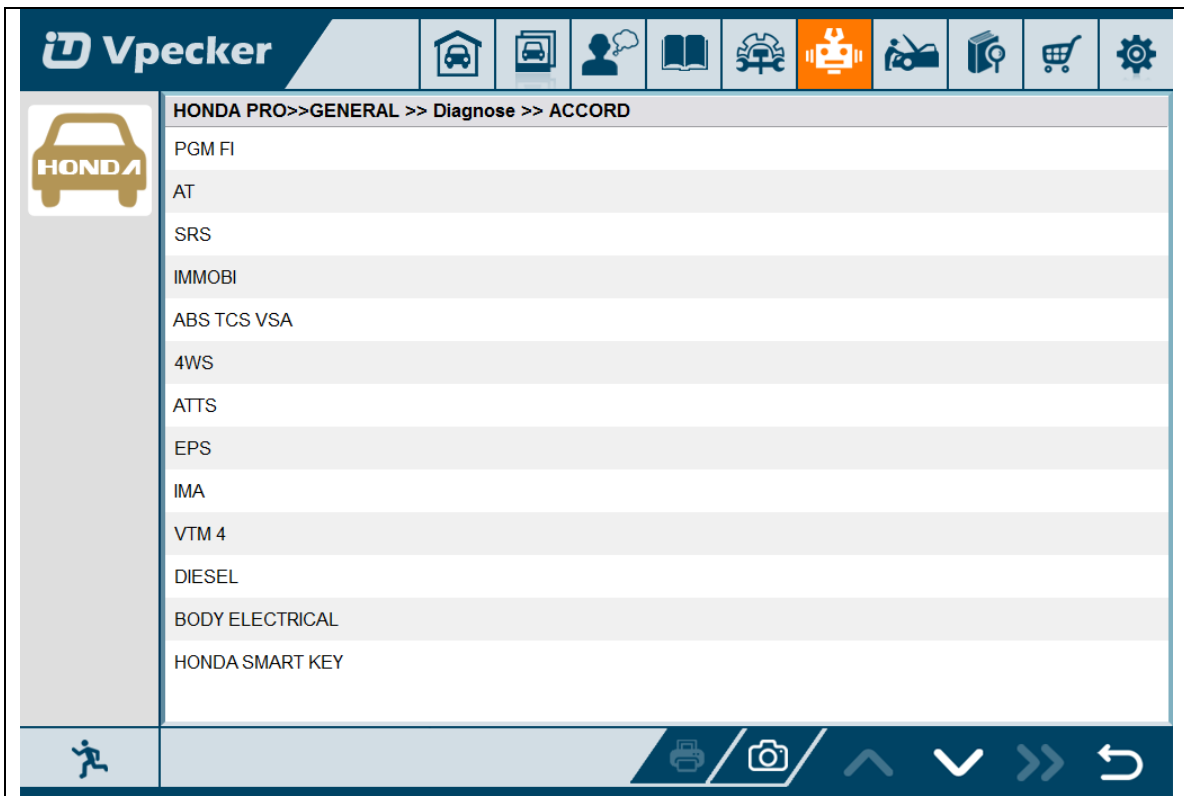


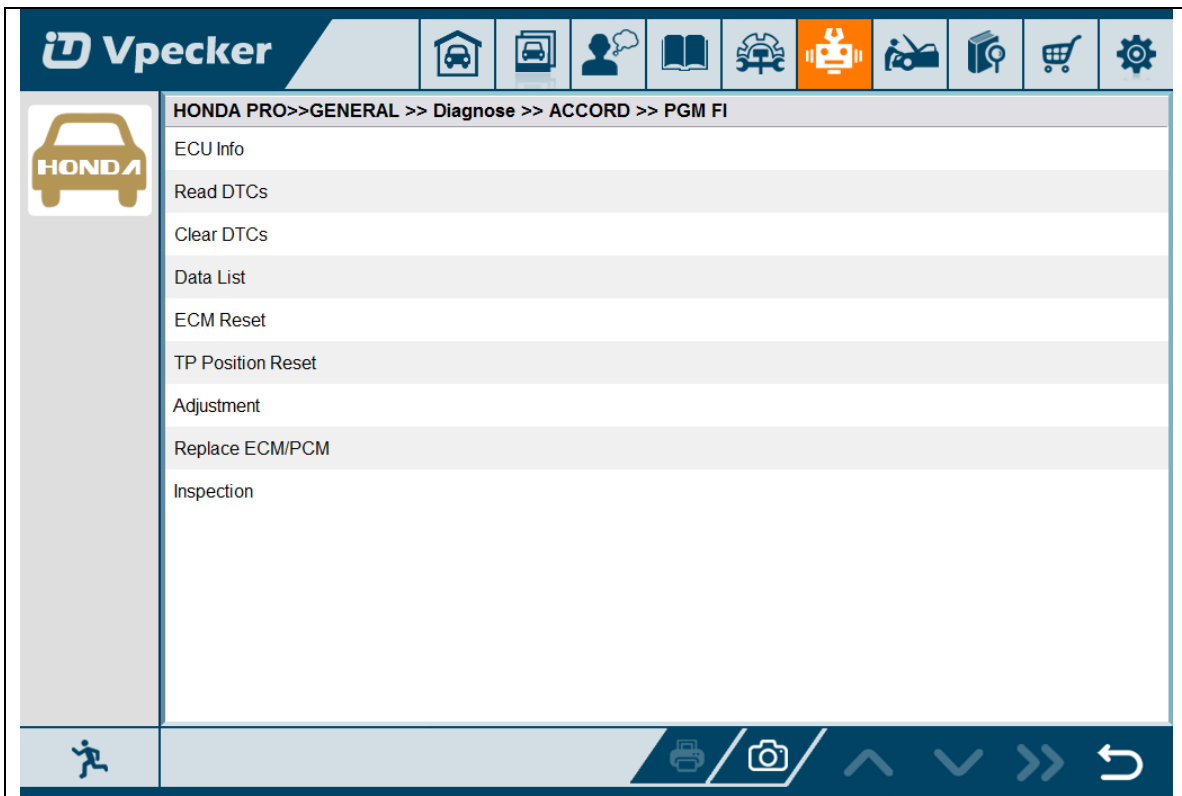
Choose the vehicle you need, and enter the diagnostic system:



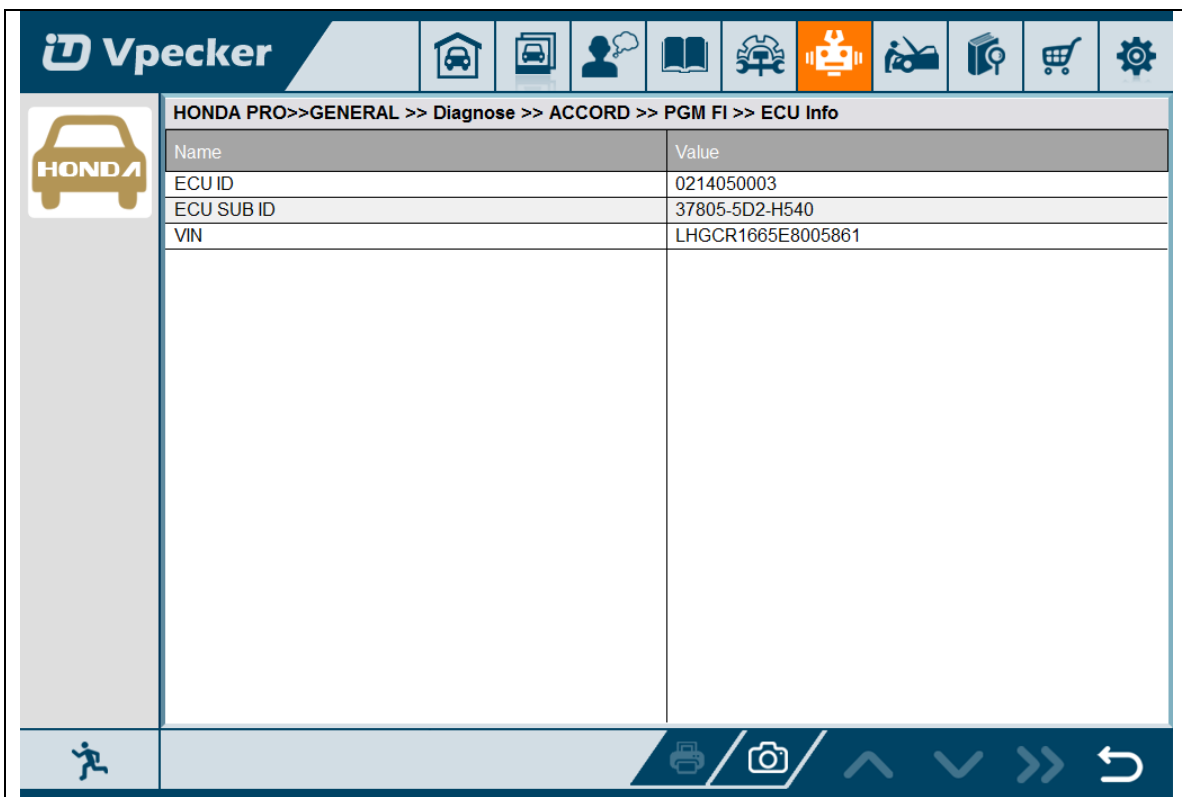
Please press next page.



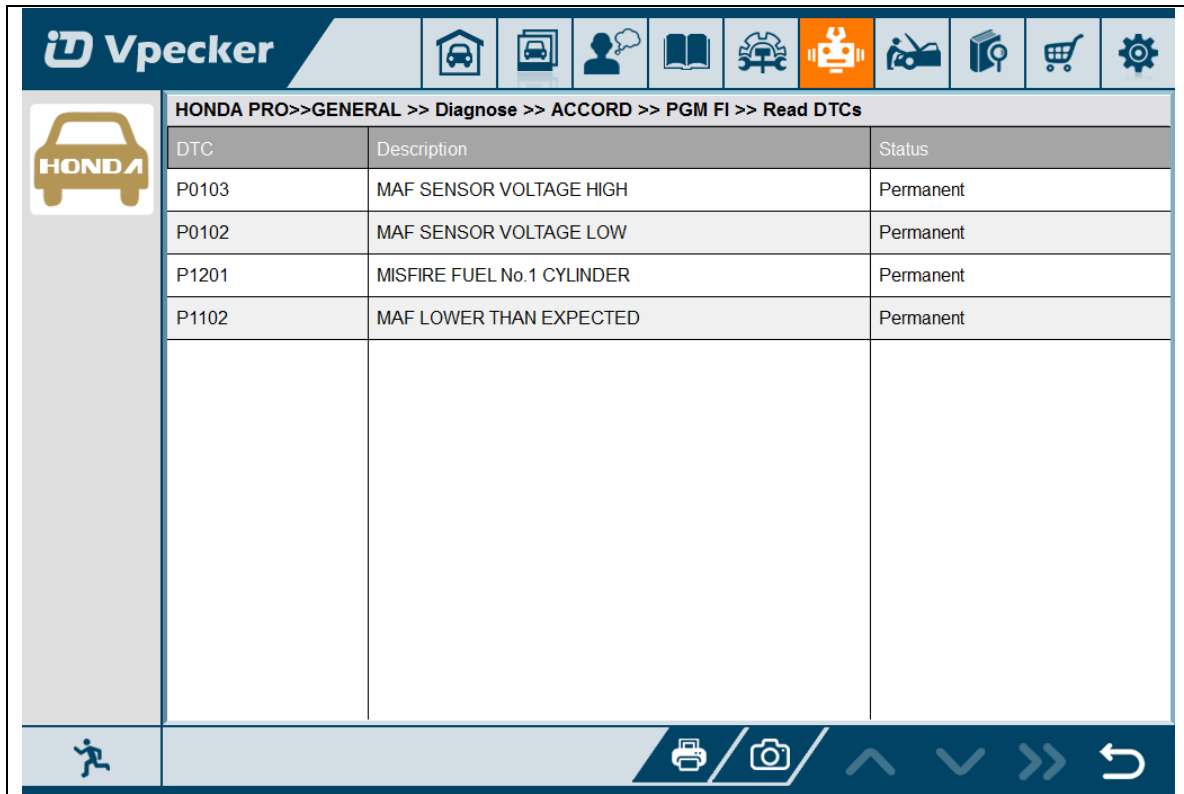




#### 4.8.2 Read ECU information



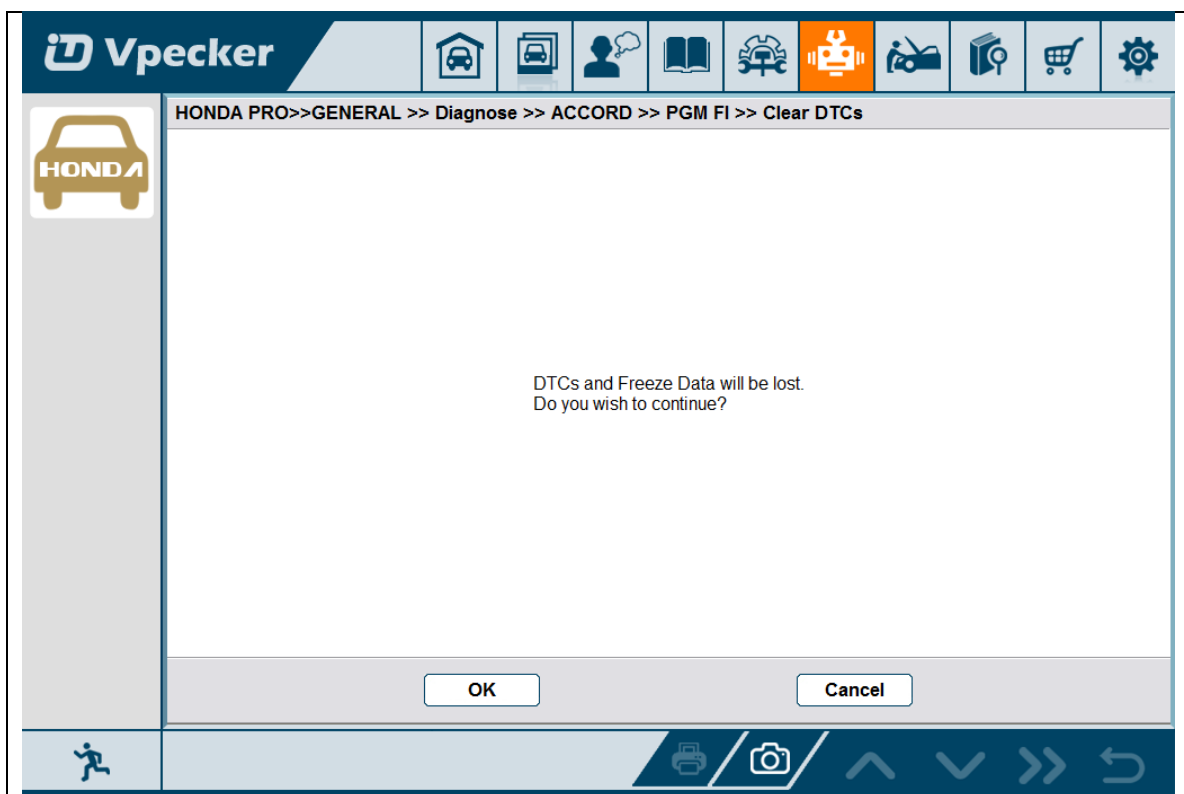
### 4.8.3 Read DTCs



HONDA PRO>>GENERAL >> Diagnose >> ACCORD >> PGM FI >> Read DTCs

DTC	Description	Status
P0103	MAF SENSOR VOLTAGE HIGH	Permanent
P0102	MAF SENSOR VOLTAGE LOW	Permanent
P1201	MISFIRE FUEL No.1 CYLINDER	Permanent
P1102	MAF LOWER THAN EXPECTED	Permanent

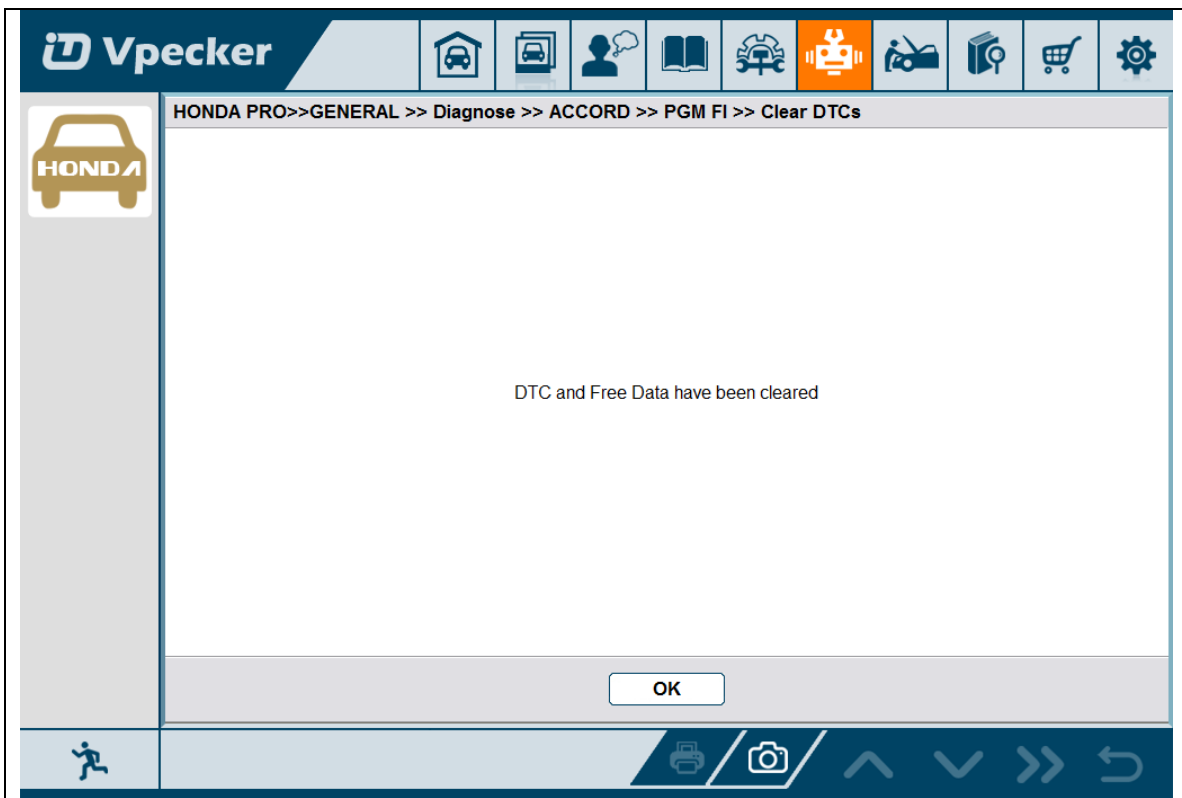
### 4.8.4 Earse DTCs



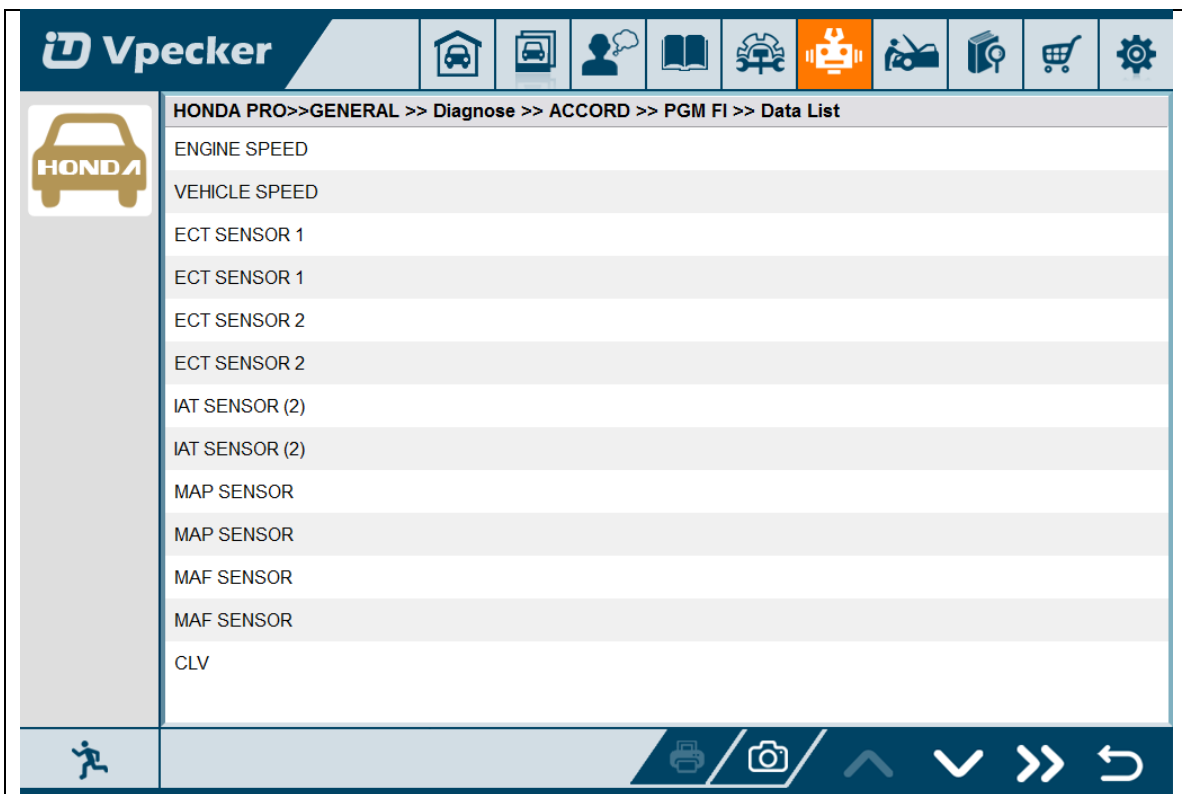
HONDA PRO>>GENERAL >> Diagnose >> ACCORD >> PGM FI >> Clear DTCs

DTCs and Freeze Data will be lost.  
Do you wish to continue?

OK Cancel



#### 4.8.5 Data List





Select some items:

HONDA PRO>>GENERAL >> Diagnose >> ACCORD >> PGM FI >> Data List

- ENGINE SPEED
- VEHICLE SPEED
- ECT SENSOR 1
- ECT SENSOR 1
- ECT SENSOR 2
- ECT SENSOR 2
- IAT SENSOR (2)
- IAT SENSOR (2)
- MAP SENSOR
- MAP SENSOR
- MAF SENSOR
- MAF SENSOR
- CLV

Name	Value	Unit
ENGINE SPEED	4146	RPM
ECT SENSOR 1	0.67	V
ECT SENSOR 2	2.25	V
IAT SENSOR (2)	62.0	degC

Channel Wave Play Record

Select the 1st item, and click the Wave button:

HONDA PRO>>GENERAL >> Diagnose >> ACCORD >> PGM FI >> Data List

Name	Value	Unit
MAX:15257		
MIN:826		
ENGINE SPEED	2237	RPM
ECT SENSOR 1	0.29	V
ECT SENSOR 2	3.92	V
IAT SENSOR (2)	46.0	degC

Channel      Data      Play      Record

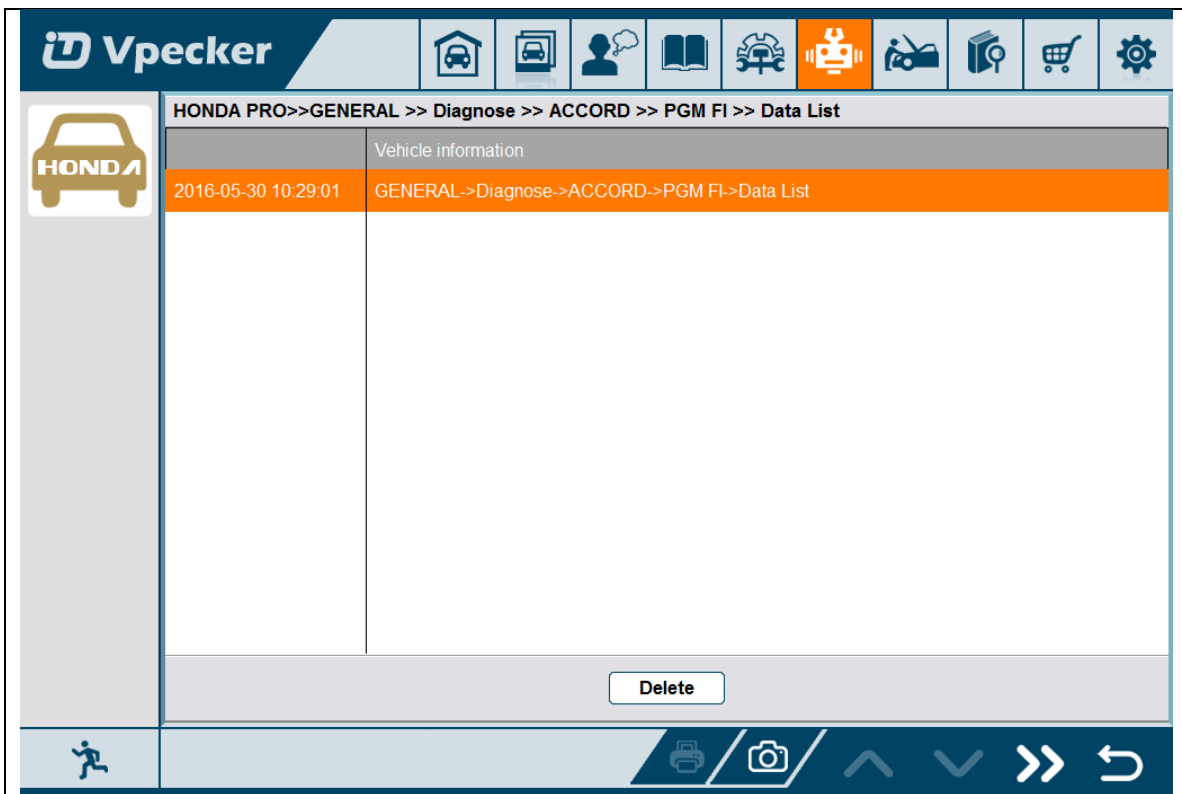
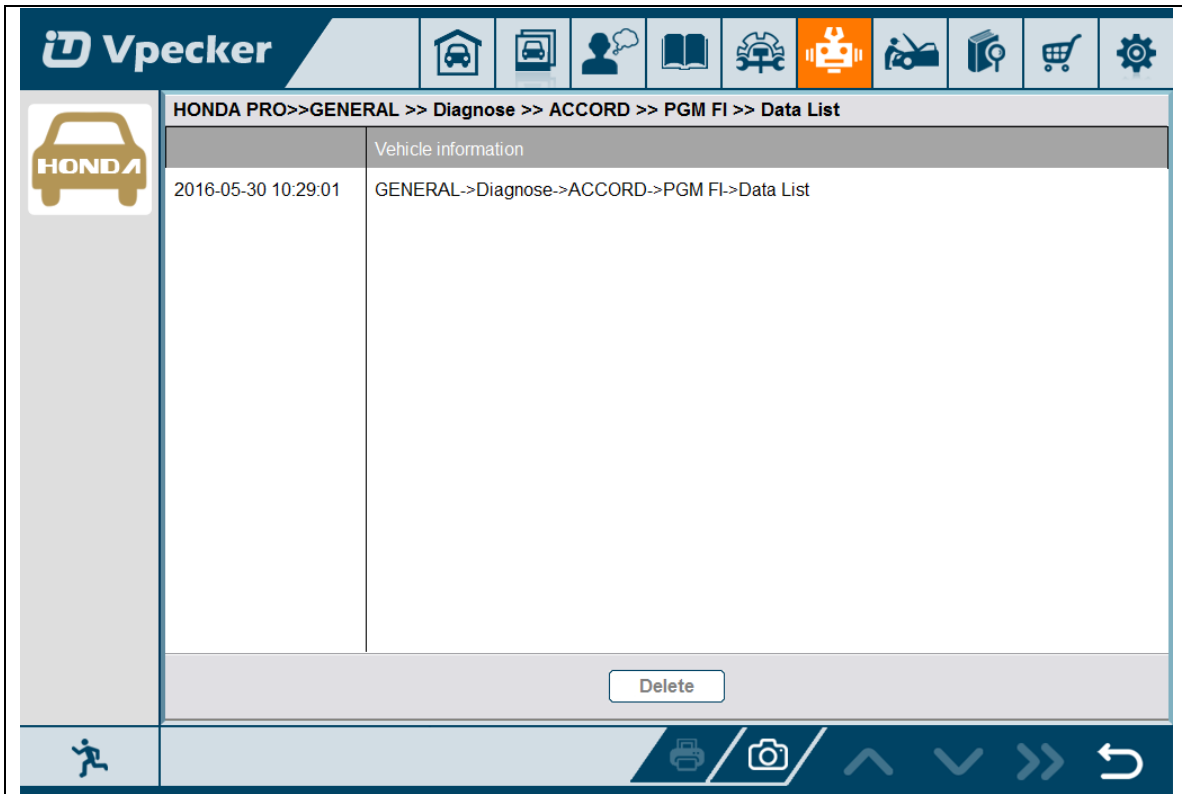
Click the Record button to start data recording, until to click Stop button to stop recording:

HONDA PRO>>GENERAL >> Diagnose >> ACCORD >> PGM FI >> Data List

Name	Value	Unit
ENGINE SPEED	8435	RPM
ECT SENSOR 1	4.65	V
ECT SENSOR 2	1.72	V
IAT SENSOR (2)	0.90	V

Channel      Wave      Play      Record

Click the Play button, it will show the recording data list, select one of them and replay the recording data:



**HONDA PRO>>GENERAL >> Diagnose >> ACCORD >> PGM FI >> Data List**

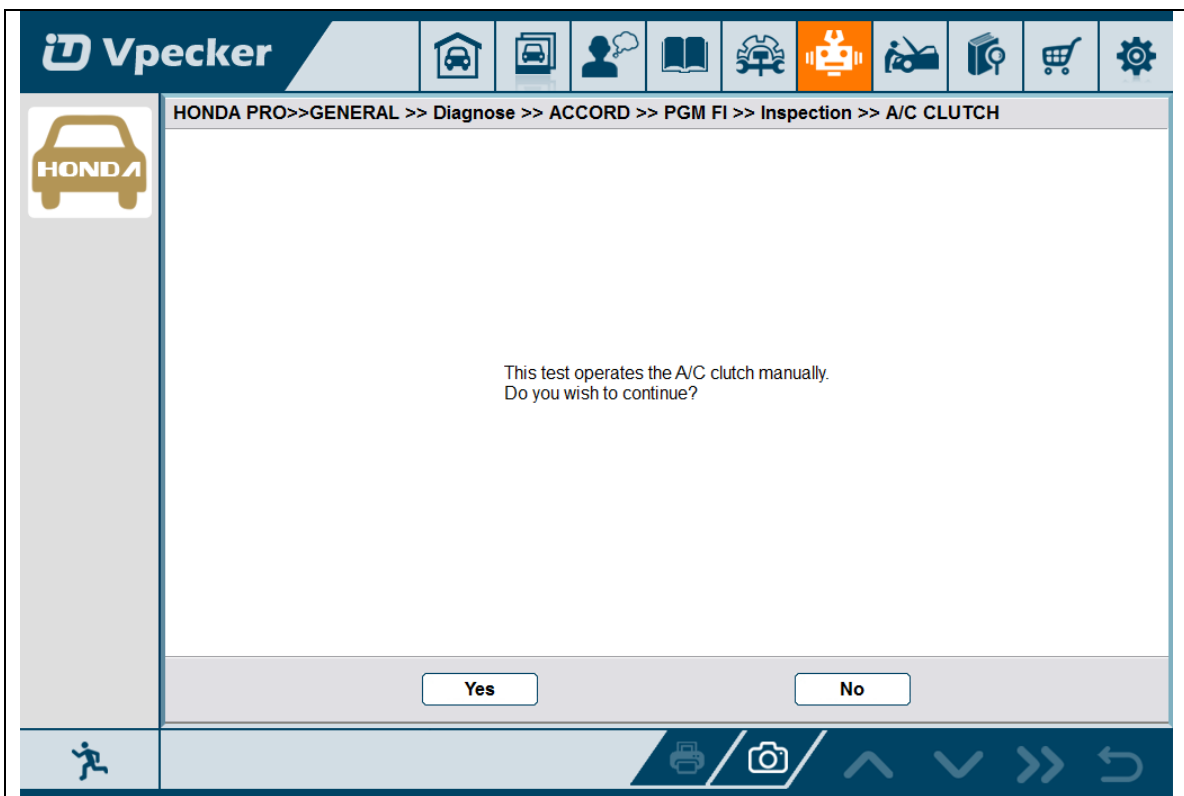
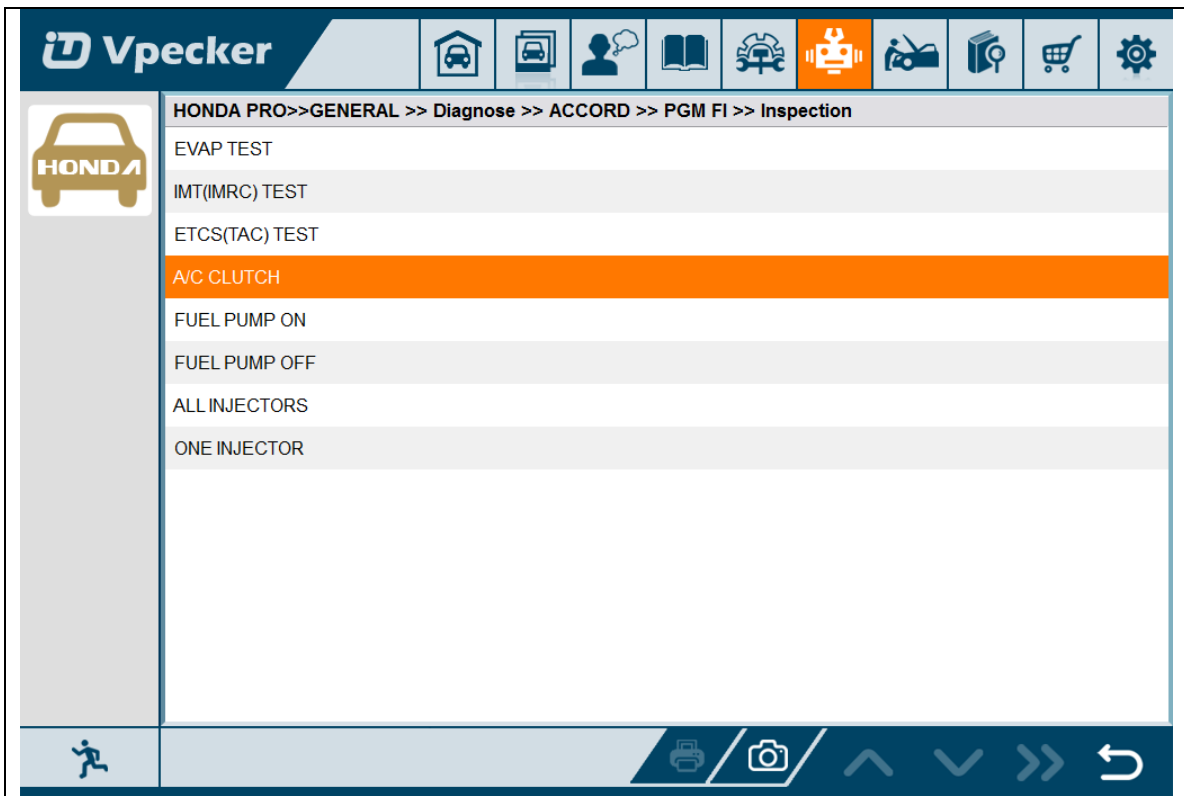
Name	Value	Unit
MAX:15988		
MIN:158		
ENGINE SPEED	4079	RPM
MAX:4.31		
MIN:0.22		
ECT SENSOR 1	4.31	V
MAX:4.80		
MIN:0.25		
ECT SENSOR 2	0.45	V
MAX:209.0		
MIN:-27.0		
IAT SENSOR (2)	209.0	degC

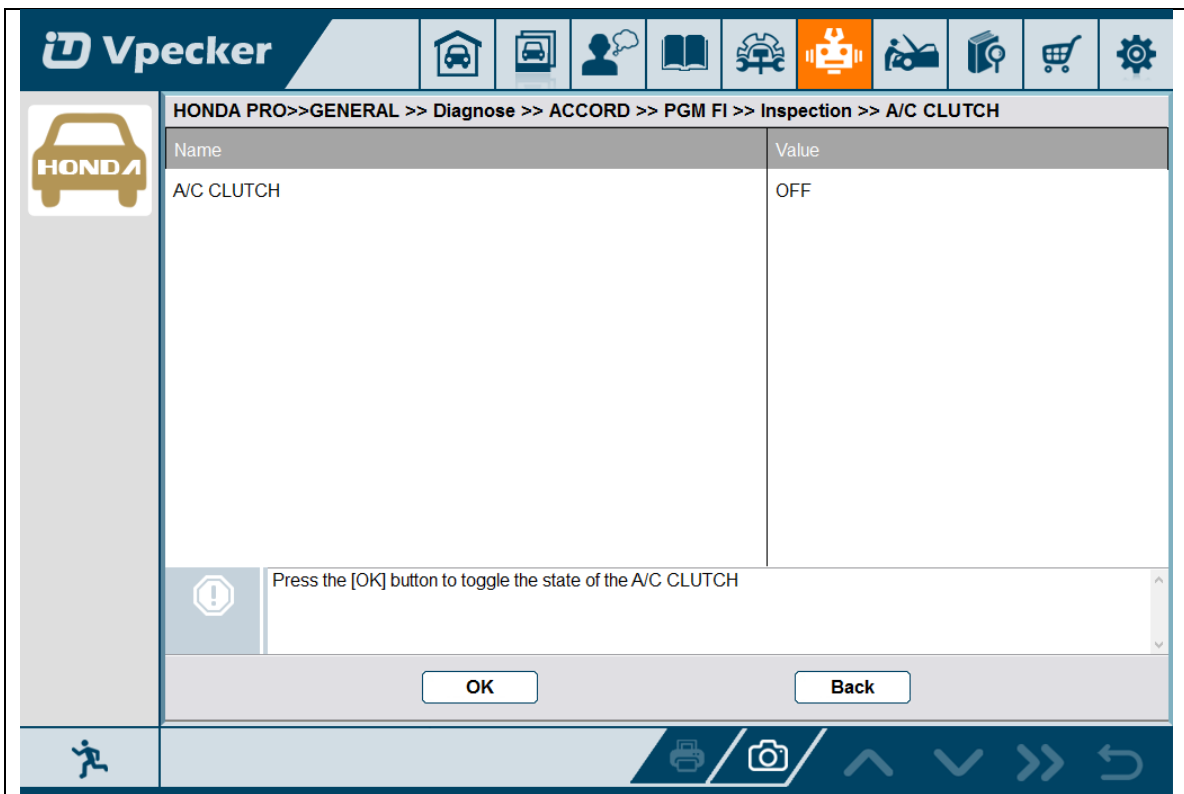
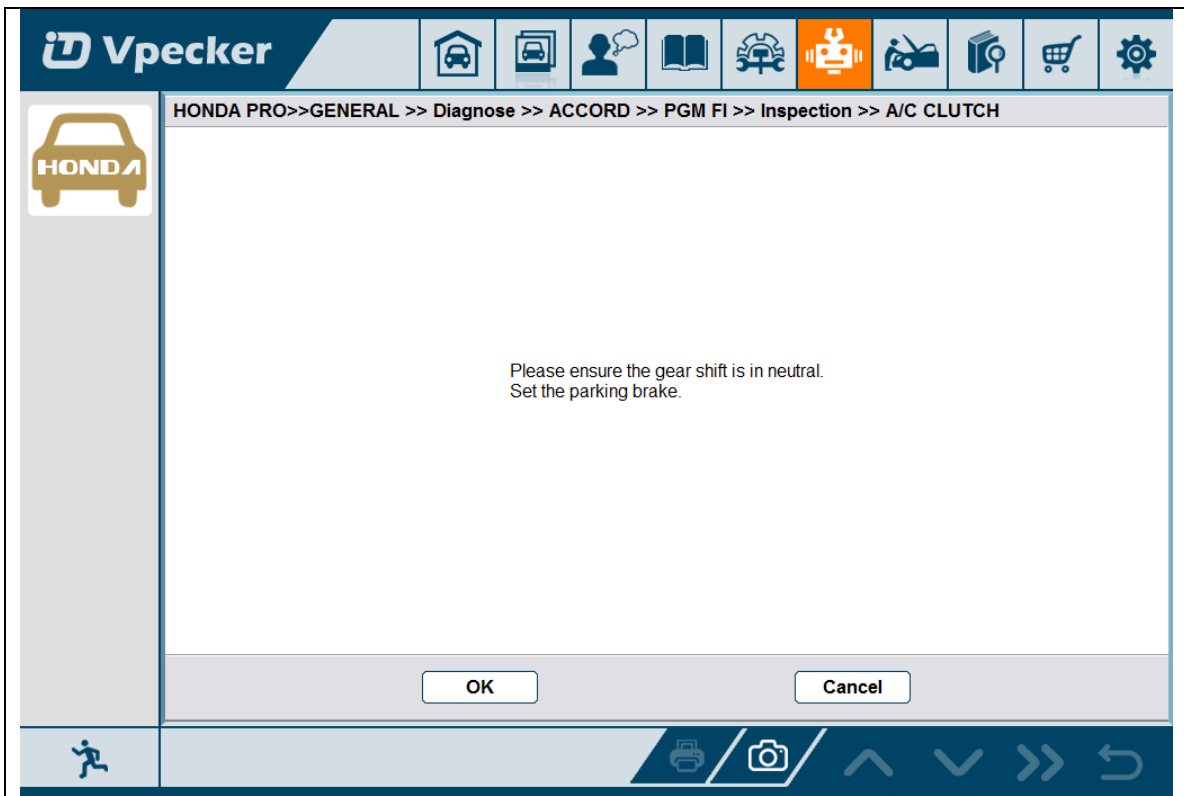
Channel    Data    Play    Record

#### 4.8.6 Inspection

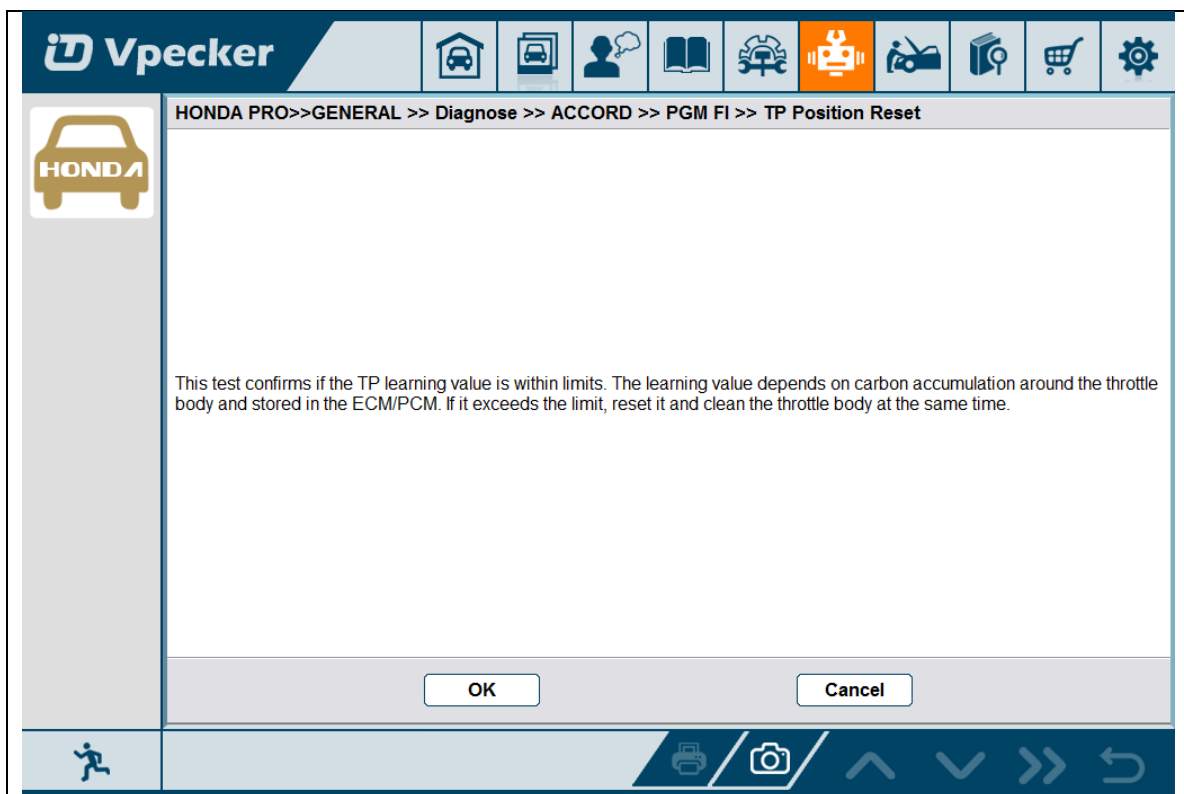
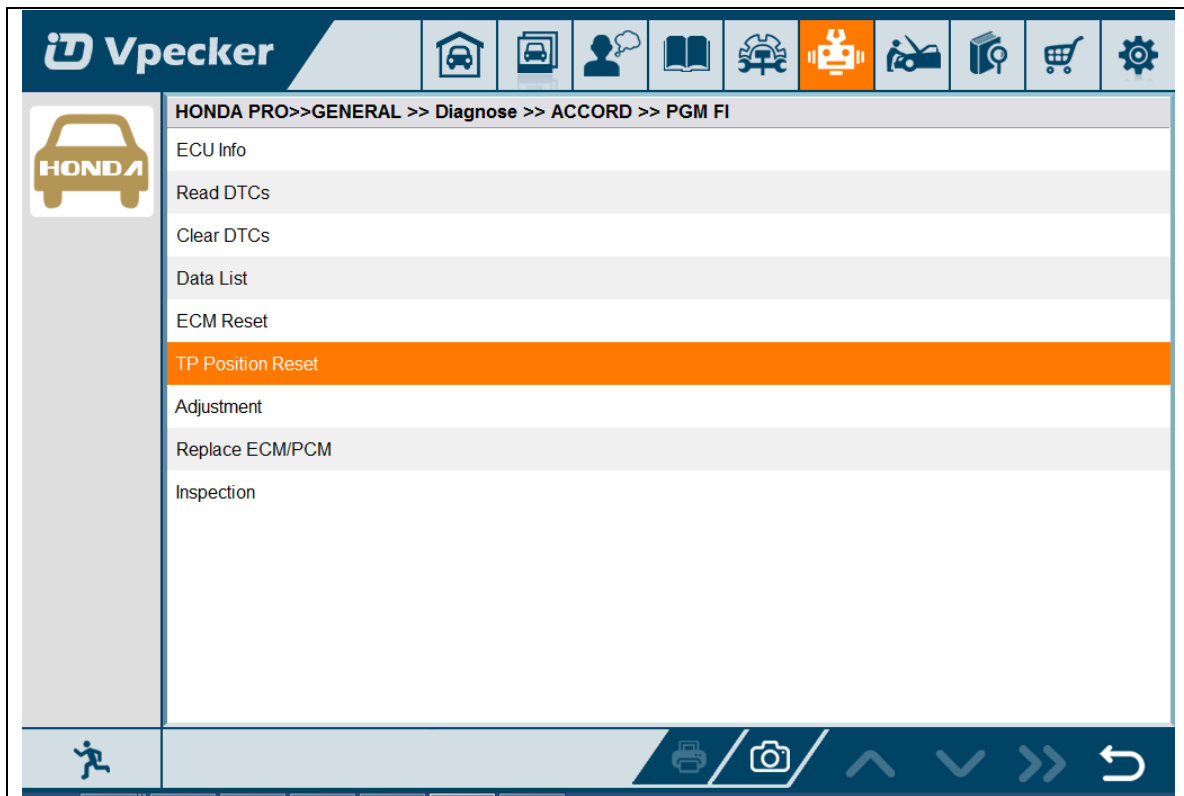
**HONDA PRO>>GENERAL >> Diagnose >> ACCORD >> PGM FI >> Inspection**

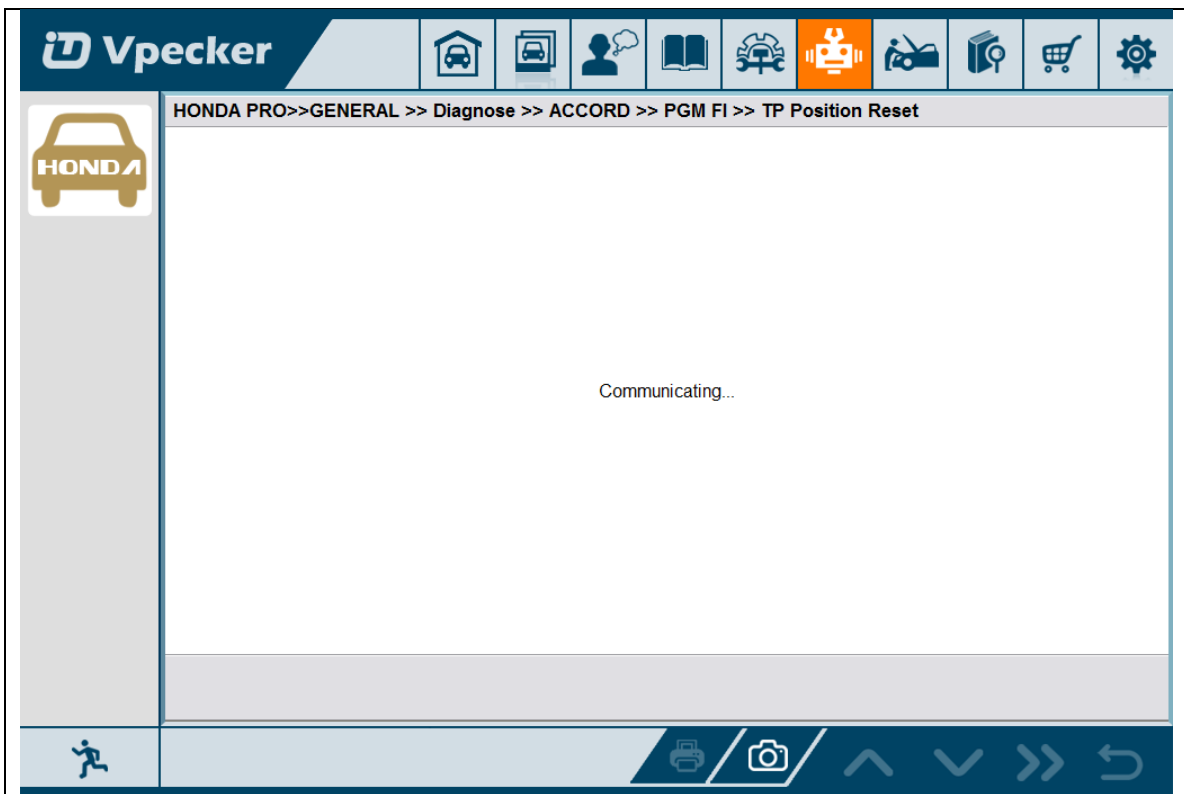
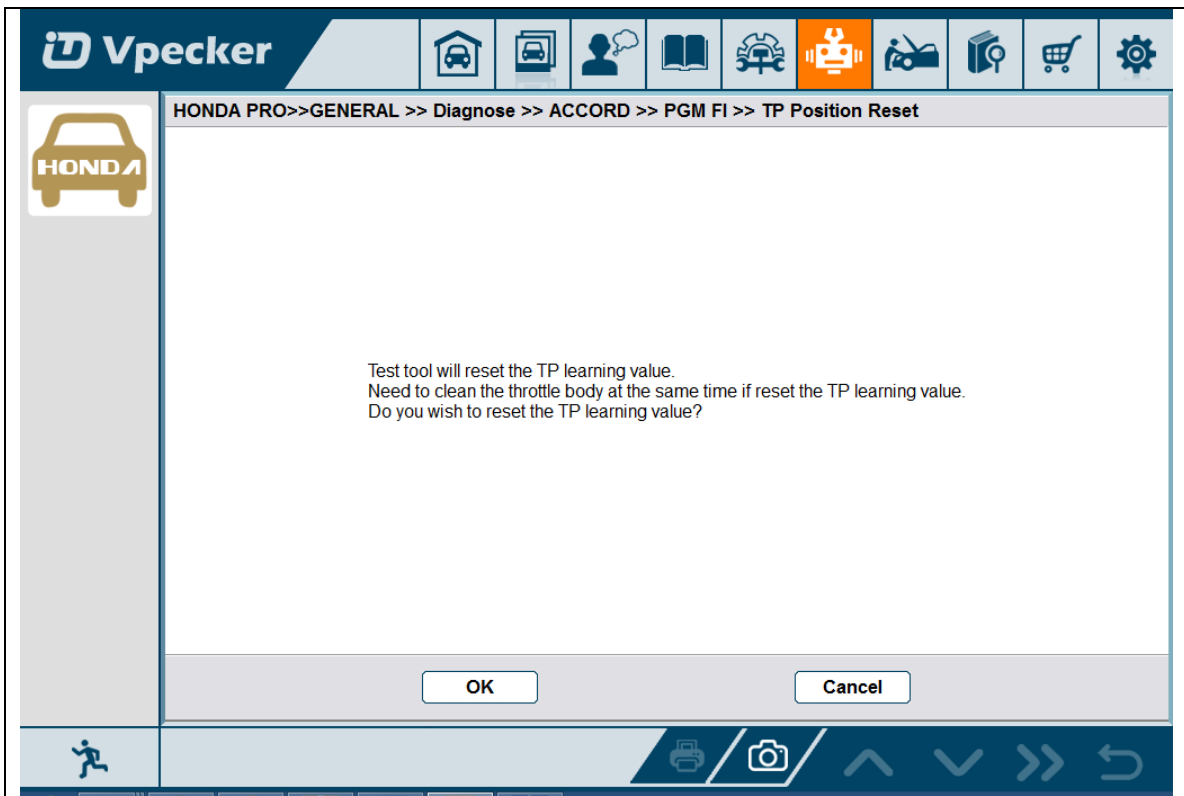
- EVAP TEST
- IMT(IMRC) TEST
- ETCS(TAC) TEST
- A/C CLUTCH
- FUEL PUMP ON
- FUEL PUMP OFF
- ALL INJECTORS
- ONE INJECTOR



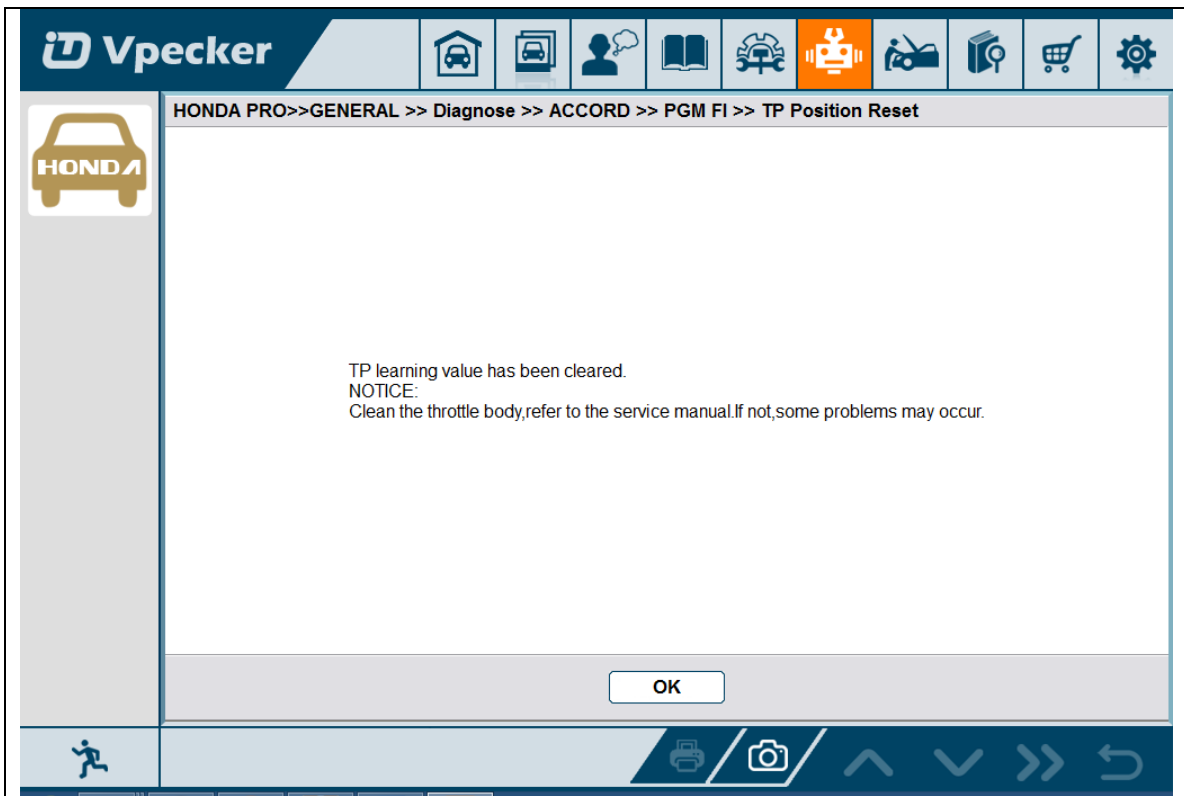


### 4.8.7 TP Position Reset



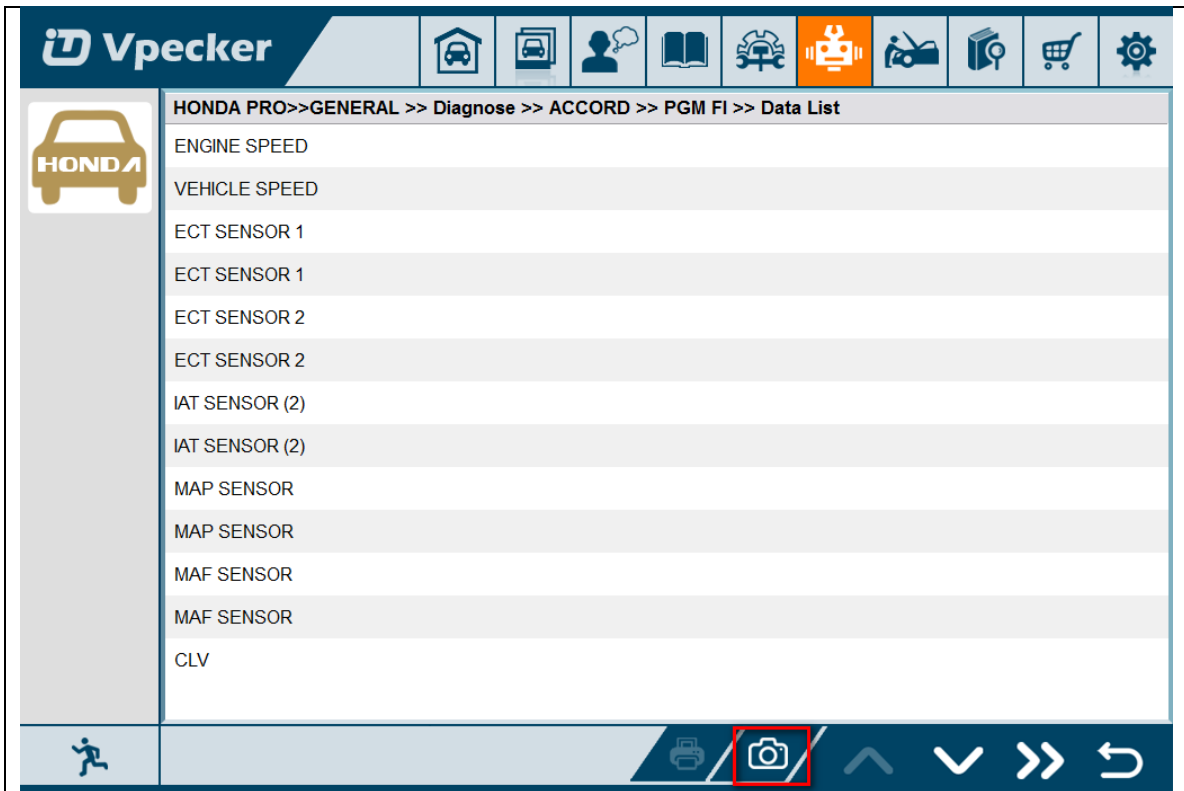




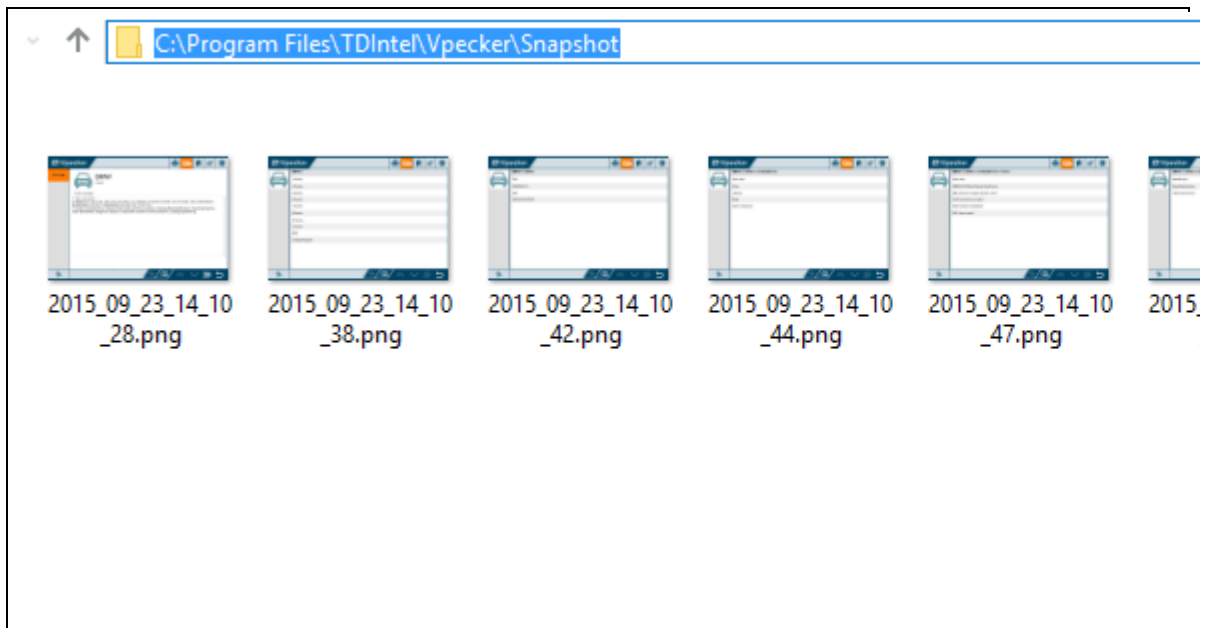


### 4.9 Screenshot

Captures, saves and prints screenshots anytime and anywhere.



The screenshot files save at the path:



## 4.10 Print

Prints out recorded data with Wi-Fi printing capability.

**HONDA PRO>>GENERAL >> Diagnose >> ACCORD >> PGM FI >> Data List**

Name	Value	Unit
ENGINE SPEED	0	RPM
VEHICLE SPEED	0	km/h
ECT SENSOR 1	3.16	V
ECT SENSOR 1	20.0	degC
ECT SENSOR 2	3.21	V
ECT SENSOR 2	18.0	degC
IAT SENSOR (2)	2.37	V
IAT SENSOR (2)	35.0	degC
MAP SENSOR	2.90	V
MAP SENSOR	101	kPa
MAF SENSOR	0.45	V
MAF SENSOR	0.4	g/s
CLV	0	%
BARO SENSOR	2.92	V
BARO SENSOR	101	kPa
TP SENSOR	17	%
REL TP SENSOR	6.71	deg
APP SENSOR	0	%

Channel Wave Play Record

Printer icon highlighted in red box.

**HONDA PRO >> GENERAL >> CITY >> AT >> Data List**

Name	Value	Unit
ENGINE SPEED	5875	RPM
DRIVE PULLEY	6867	RPM
DRIVEN PULLEY		RPM
SECONDARY SHAFT		RPM
VEHICLE SPEED		km/h
SECONDARY SHAFT		km/h
DRIVEN PULLEY SPE		km/h
TP SENSOR		deg
MAP SENSOR		kPa
PNP SWITCH		
A/T R SWITCH		
A/T D SWITCH		
A/T L SWITCH		
SCS		
BRAKE SWITCH		
MODE D SWITCH		
MODE S1/S2 SWITCH	OFF	
S1 INDICATOR	ON	

**Print Dialog Box:**

Printer Name: Microsoft Print to PDF  
 Status: Ready  
 Type: Microsoft Print To PDF  
 Where: PORTPROMPT:  
 Comment:

Print range:  All  
 Pages from: [ ] to: [ ]  
 Selection

Copies: Number of copies: 1  
 Collate

Buttons: OK, Cancel

Bottom Bar: Channel, Wave, Play, Record

Press "OK" to print the test report, as below:



★ Company name:  
 📍 Address:  
 ☎ Tel:  
 📠 Fac:  
 ✉ Email:

Date: 2015-09-23 11:44:19  
 Vehicle: HONDA PRO

Path: HONDA PRO / GENERAL / CITY / AT / Data List

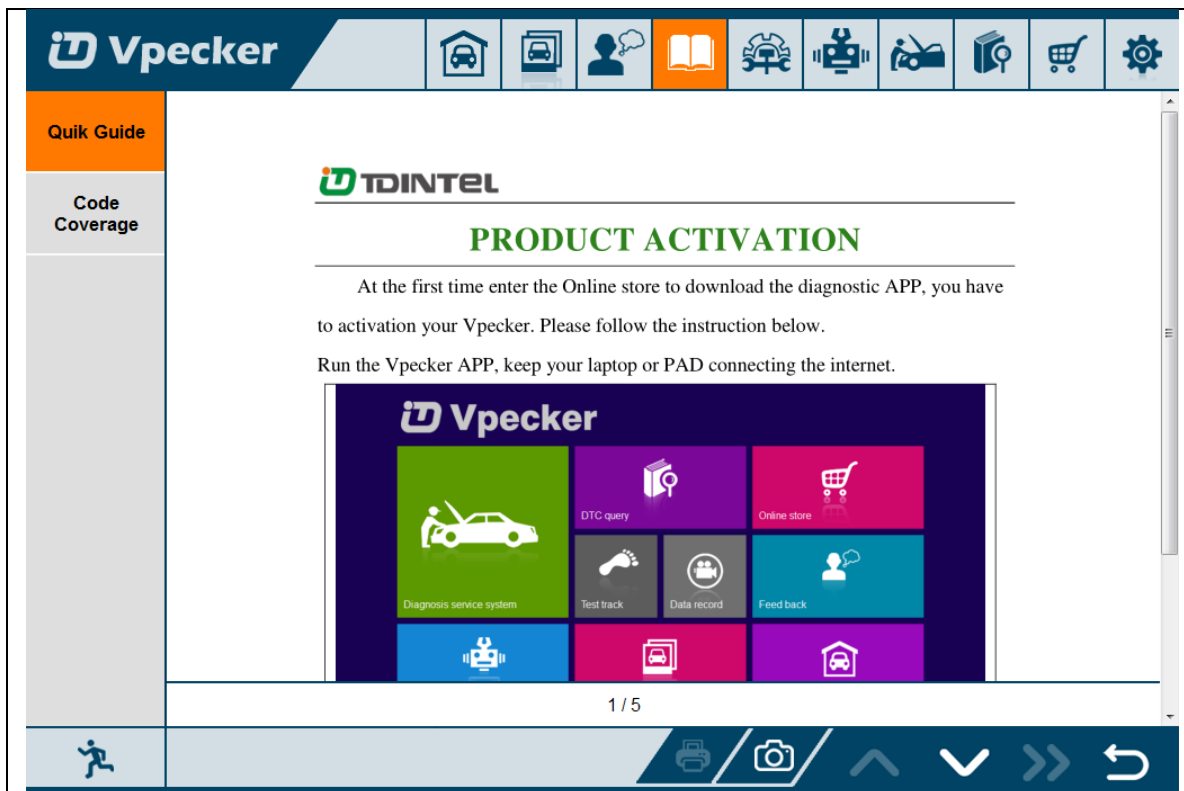
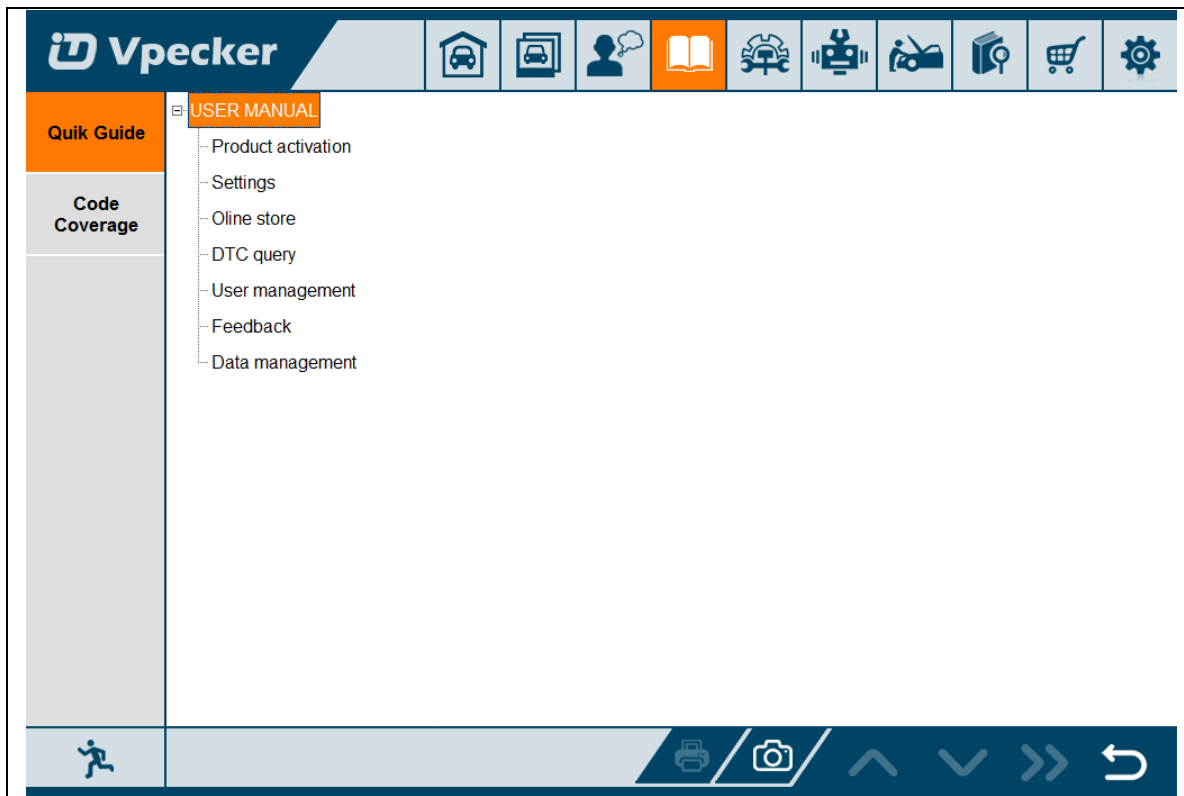
### Live Data

Name	Value	Unit
ENGINE SPEED	10628	RPM
DRIVE PULLEY	8456	RPM
DRIVEN PULLEY	11111	RPM
SECONDARY SHAFT SPEED	7639	RPM
VEHICLE SPEED	125	km/h
SECONDARY SHAFT SPEED	172	km/h
DRIVEN PULLEY SPEED	207	km/h
TP SENSOR	44.3	deg
MAP SENSOR	157	kPa
PNP SWITCH	ON	
A/T R SWITCH	OFF	
A/T D SWITCH	OFF	
A/T L SWITCH	ON	
SCS	SHORT	
BRAKE SWITCH	ON	
MODE D SWITCH	ON	
MODE S1/S2 SWITCH	ON	
S1 INDICATOR	ON	
S2 INDICATOR	OFF	
D INDICATOR	OFF	
INHIBITOR SOL	ON	
COOLING CONTROL	OFF	
FEEDBACK LEARN	Completed	
SHIFT CONTROL SOL	99.24	A
PULLEY CONTROL SOL	81.61	A
START CLUTCH CONTROL SOL	8.49	A

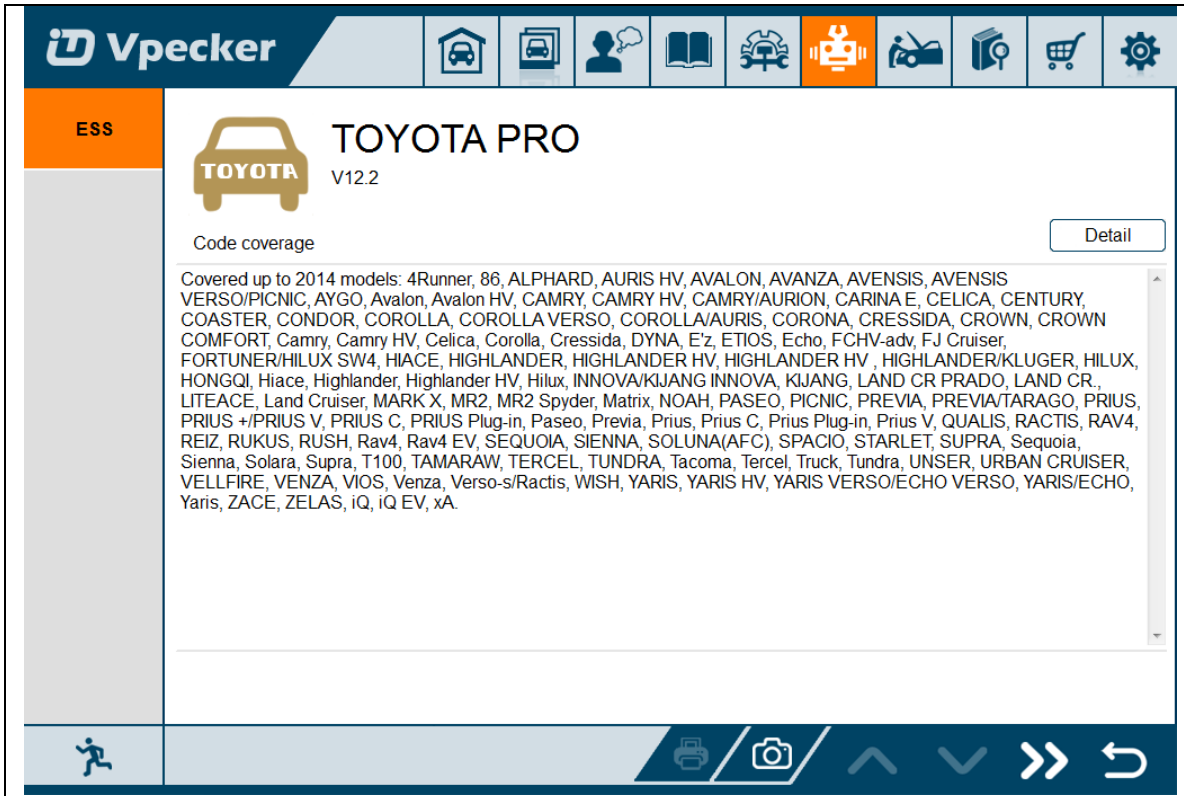
- 1 -

## 4.11 Manual

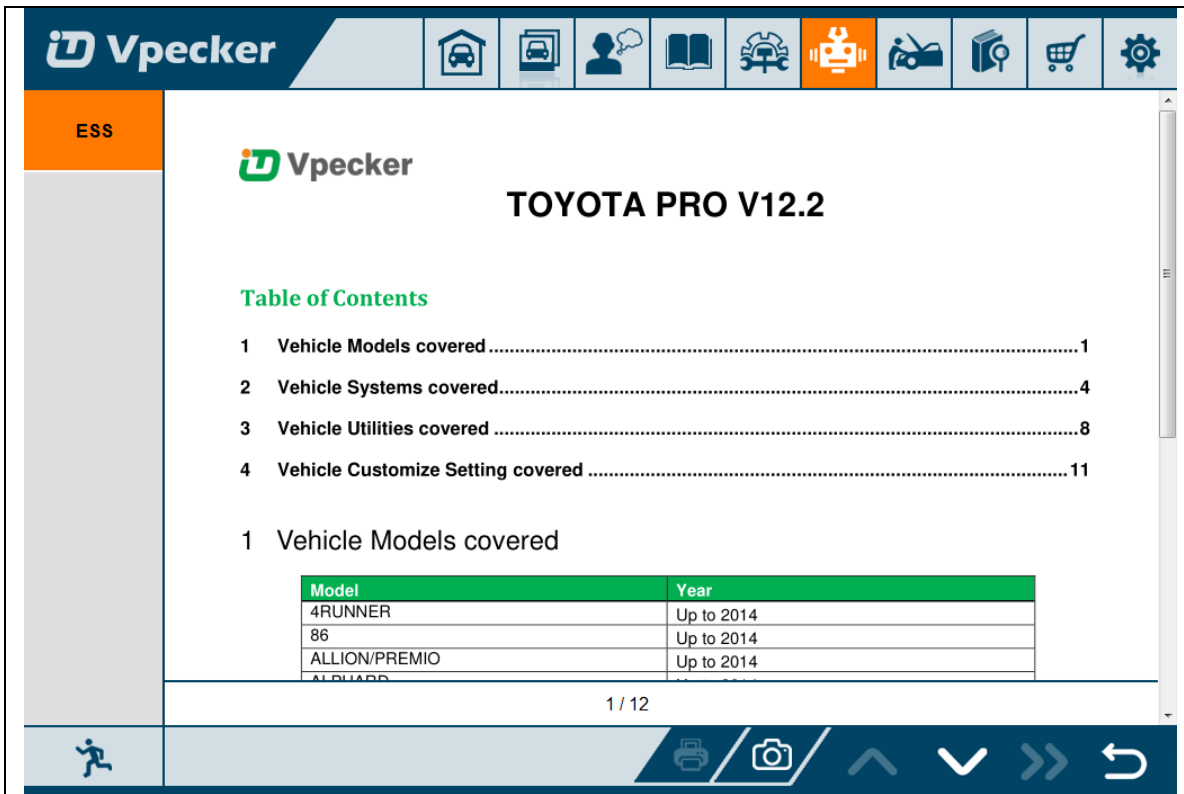
In manual function, you can read the Vpecker quick guide and the vehicle code coverage.



## 4.12 Diagnose function list

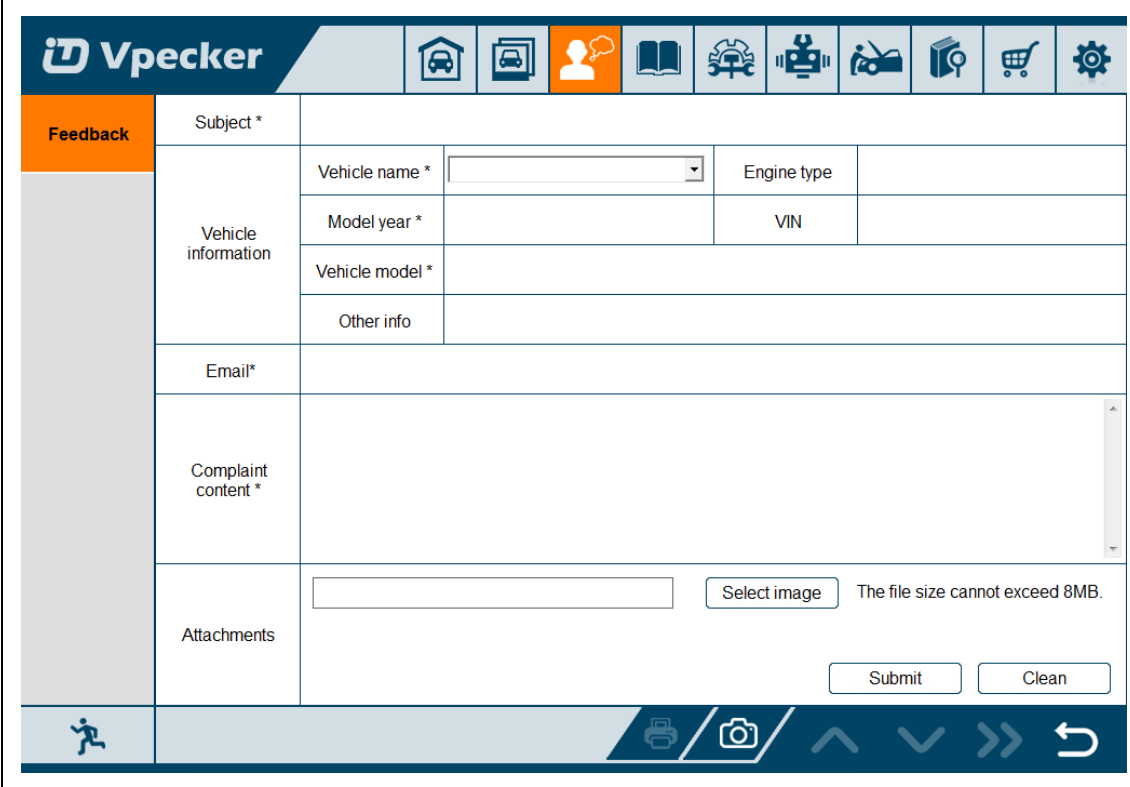


Press "Detail" button



## 4.13 Feedback

The information of diagnostic software problems can be uploaded to the manufacture by this function. It helps the engineers to fix the bugs quickly.



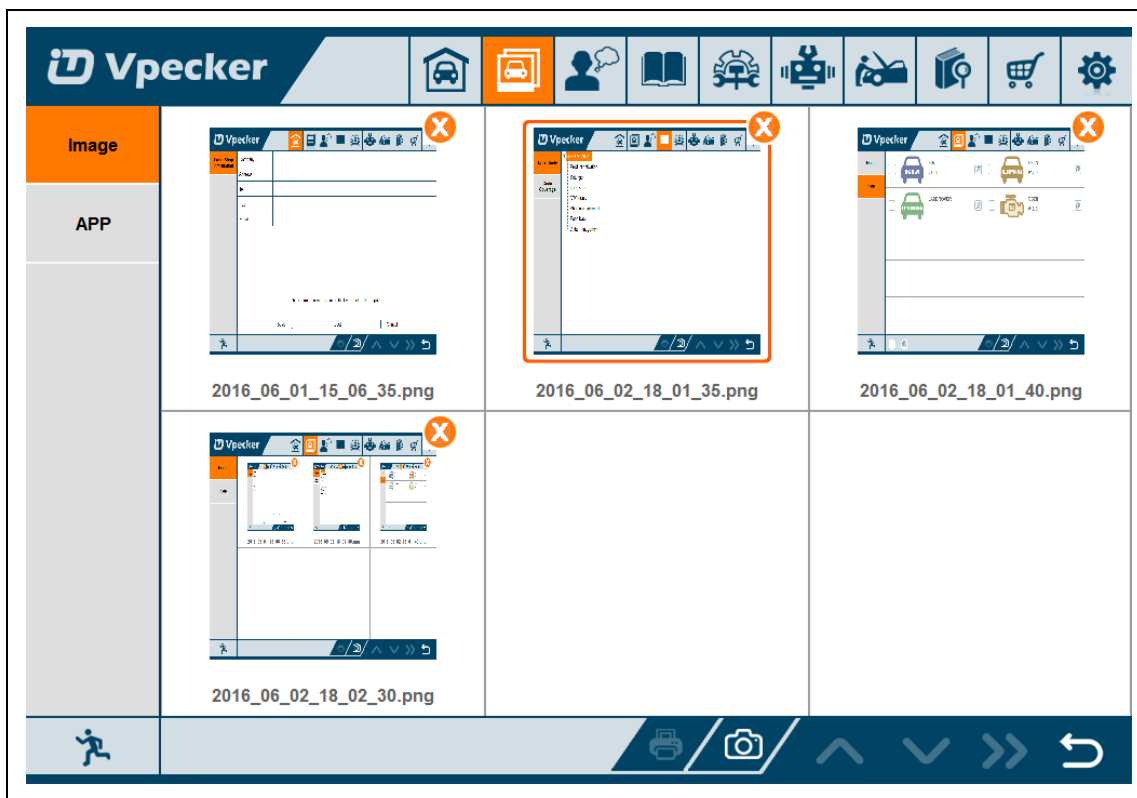
Feedback	
Subject *	
Vehicle information	Vehicle name * <input type="text"/>
	Model year * <input type="text"/>
	Vehicle model * <input type="text"/>
	Other info <input type="text"/>
Email *	<input type="text"/>
Complaint content *	<input type="text"/>
Attachments	<input type="text"/> <input type="button" value="Select image"/> The file size cannot exceed 8MB.
<input type="button" value="Submit"/> <input type="button" value="Clean"/>	

NOTE: With \* information is required; the attachments size cannot exceed 8MB.

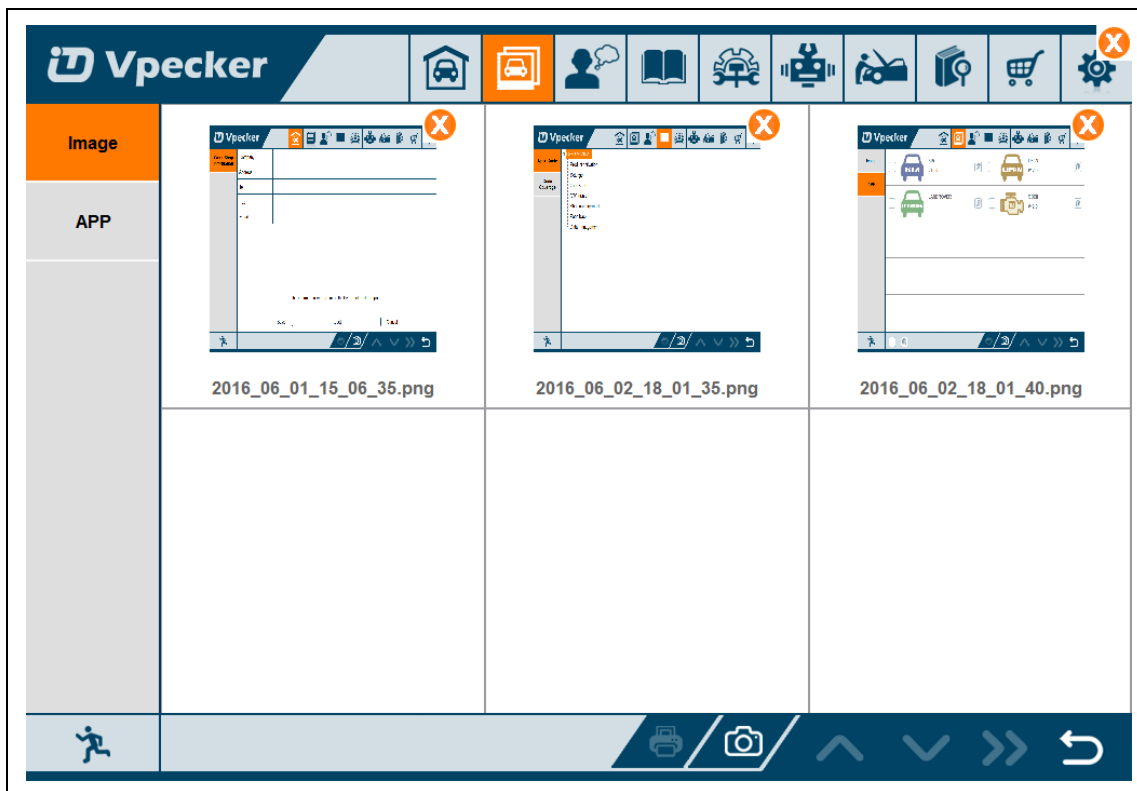
## 4.14 Data Management

### 4.14.1 Image management

Here you can browse or delete the pictures.

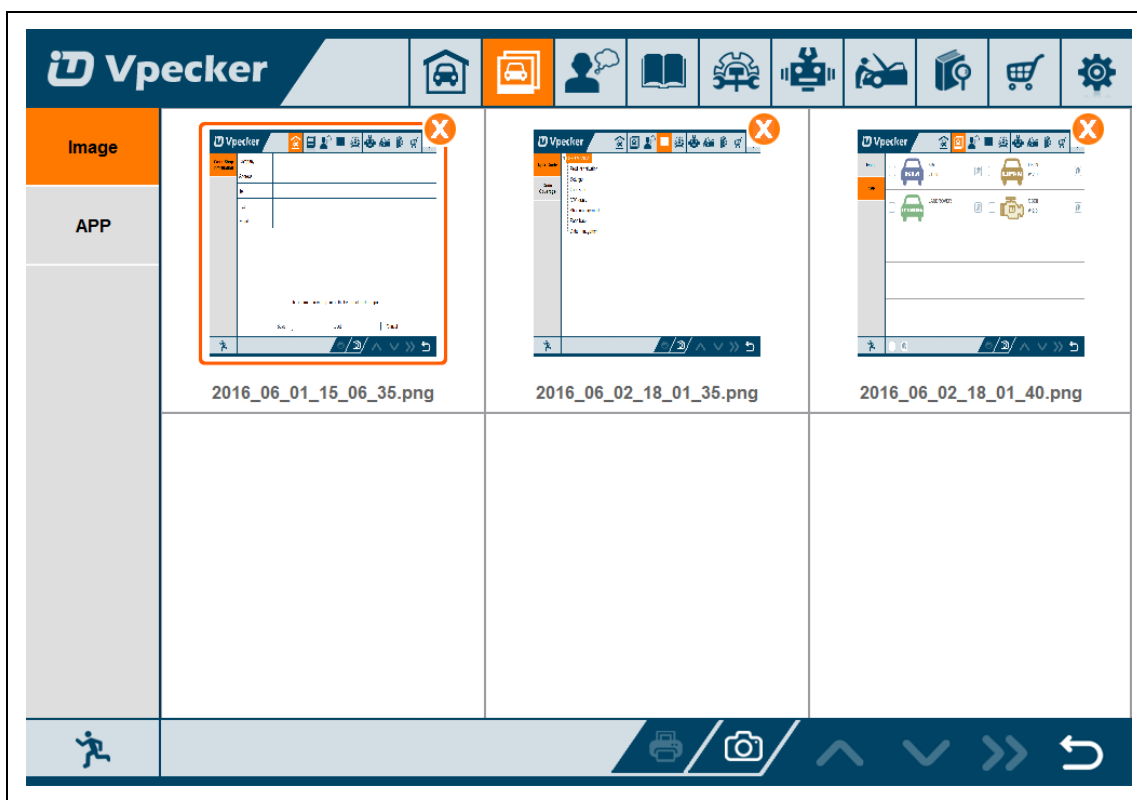


Click the image to browse the picture.



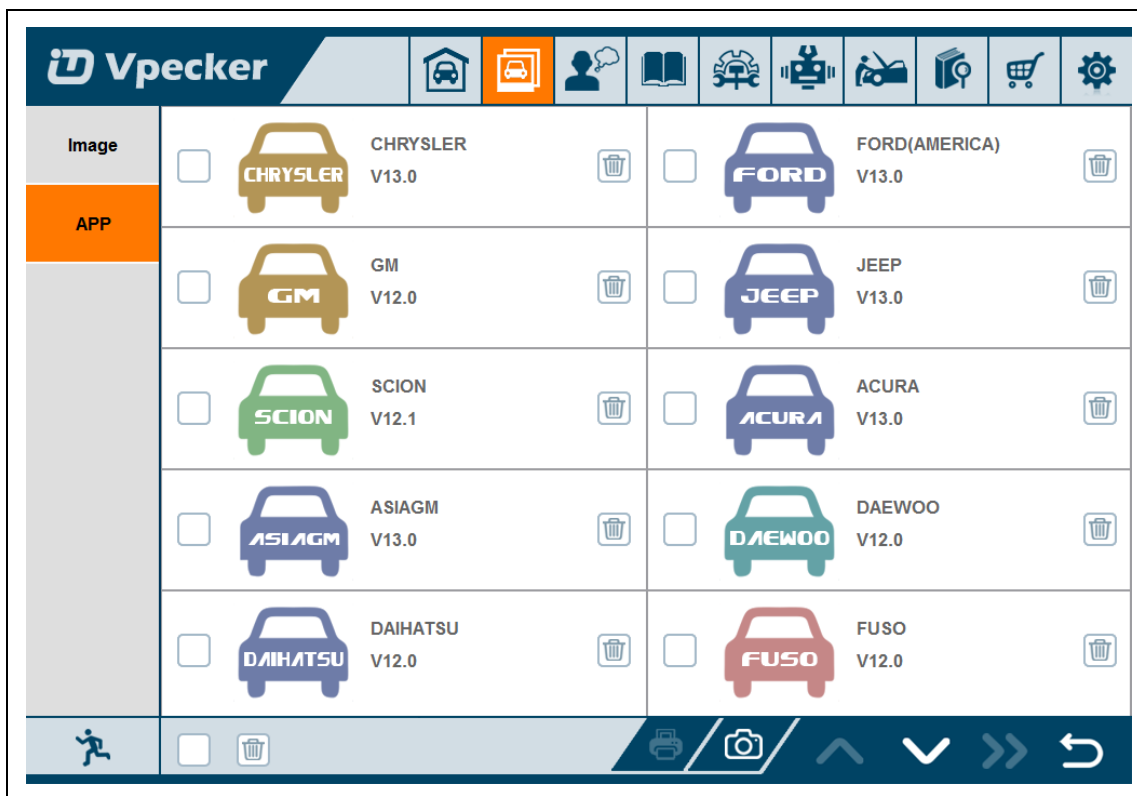
Click the “X” symbol to delete the image.





#### 4.14.2 APP management

Users can delete the diagnostic software here, one by one or all-selected delete.



## 4.15 User Management

Input workshop information, and save the information.

Vpecker		
<b>Work Shop Information</b>	Company	TDIntel
	Address	No.410, Building B of PengNian University Innovation Park,D5 South District of Hong Hua Ling Industrial /
	Tel	+86-(0)755-26407749
	Fax	+86-(0)755-26407749
	Email	Vpecker@tdintel.com
	The information will appear on the header of printed reports.	
<input type="button" value="Save"/> <input type="button" value="Clean"/> <input type="button" value="Cancel"/>		

Click the “Edit” button to change the information.

Vpecker		
<b>Work Shop Information</b>	Company	TDIntel
	Address	No.410, Building B of PengNian University Innovation Park,D5 South District of Hong Hua Ling Industrial /
	Tel	+86-(0)755-26407749
	Fax	+86-(0)755-26407749
	Email	Vpecker@tdintel.com
	The information will appear on the header of printed reports.	
<input type="button" value="Edit"/>		

## 5. Products website

Please focus on our website [www.tdintel.com](http://www.tdintel.com) for the updating information and other news.

## 6. Warranty

VPECKER software is free updating within 1 year from the date of product activation.