

FVDI J2534

—— Operate Guide

Catalogue

I.Safety Precautions and Warnings.....	1
II.Product overview.....	1
2.1 Product appearance and details.....	2
2.2 Specifications.....	3
2.3 Accessories Include.....	4
2.4 System Requirements.....	4
III.Download and Install software.....	4
3.1 Get FVDI J2534 equipment software.....	5
3.2 Install IDS and FVDI J2534 software.....	7
IV IDS Operate Manual.....	11

I.Safety Precautions and Warnings

To prevent personal injury or damage to vehicles and/or the tool, read this instruction manual first and observe the following safety precautions at a minimum whenever working on a vehicle:

- Always perform automotive testing in a safe environment.
- Wear safety eye protection that meets ANSI standards.
- Keep clothing, hair, hands, tools, test equipment, etc. away from all moving or hot engine parts.
- Operate the vehicle in a well ventilated work area: Exhaust gases are poisonous.
- Put blocks in front of the drive wheels and never leave the vehicle unattended while running tests.
- Use extreme caution when working around the ignition coil, distributor cap, ignition wires and spark plugs. These components create hazardous voltages when the engine is running.
- Put the transmission in PARK (for automatic transmission) or NEUTRAL (for manual transmission) and make sure the parking brake is engaged. Keep a fire extinguisher suitable for gasoline/chemical/electrical fires nearby.
- Don't connect or disconnect any test equipment while the ignition is on or the engine is running.
- Keep the tool dry, clean, free from oil/water or grease. Use a mild detergent on a clean cloth to clean the outside of the scan tool, when necessary.

II.Product overview

Thank you for choosing FVDI J2534 automotive diagnostic tool. This manual includes the use of equipment notes, please read this manual carefully before use that you can correctly use it.

2.1 Product appearance and details



1 Vehicle connection of molded DLC3 (OBD II -16)

2 Products information

3 Status LED:

- Work normal: Green LED blinks continuously slowly
- Firmware updating: Red LED blinks continuously quickly

4 PS Push Switch:

- Released: works as ELM327 mode
- Pressed: works as J2534 mode

5 Serial number

2.2 Specifications

Product specifications

Lenth	106.8mm
Width	59mm
High	27.1mm
Weight	78g
Environment	-20°C ~ 45°C
Voltage Requirements	8 VDC ~ 32VDC 100mA(max)
Power	0.6 Watts @ 12 VDC

Technical Specifications

Vehicle Protocols	ISO9141 ISO14230 J1850 VPW J1850 PWM(Ford SCP) ISO11898 HS(500K BPS) ISO11898 MS(125K BPS) ISO15765 HS(500K BPS) ISO15765 MS(125K BPS) FEPS(Flash EEPROM Program Signal) Honda SCS Honda DIAGH KWP1281 J2819(TP2.0)
Supported software for J2534	Ford IDS V110 Mazda IDS V108 Toyota TIS V13.00 Honda HDS V3.102 Land Rover/Jaguar SDD2 V153 Nissan CONSULT III plus R2R V80.11
Supported software for ELM327	ELMconfig Forscan FOCCCUS FF2

Packing specification

Lenth	154mm
Width	154mm
High	51mm
Weight	286g

2.3 Accessories Include

ITEM	Description
Operate Guide	Tool operation instructions
CD	Includes installation package, Operate guide etc...
USB cable	Communicates between tool and PC/Laptop
Packing box	Includes usb cable, CD and Operate Guide

2.4 System Requirements

Requirements	minimum configuration	Recommend configuration
Hardware		
CPU	Pentium 3/1GHZ	Pentium4/1.8GHZ or above
Memory(RAM)	256M	512M or above
HDD	40G	60G or above
Display	800x600	1024x768 or above
OS	Win7(64bit)	Win7(64bit) or above
USB interface	One	One or more

III.Download and Install software

FVDI J2534 is very simple to use and easy to install. You only need to do two steps to Install software. First, Install FVDI J2534 start software, then install the original brand vehicle software, For example, Ford, Mazda, Honda, Toyota. However, it is important to note that these software cannot be installed in the same computer. If you want to use these software via FVDI J2534 equipment, please install different software on different computers.

Note: the software installation are not required installation sequence.

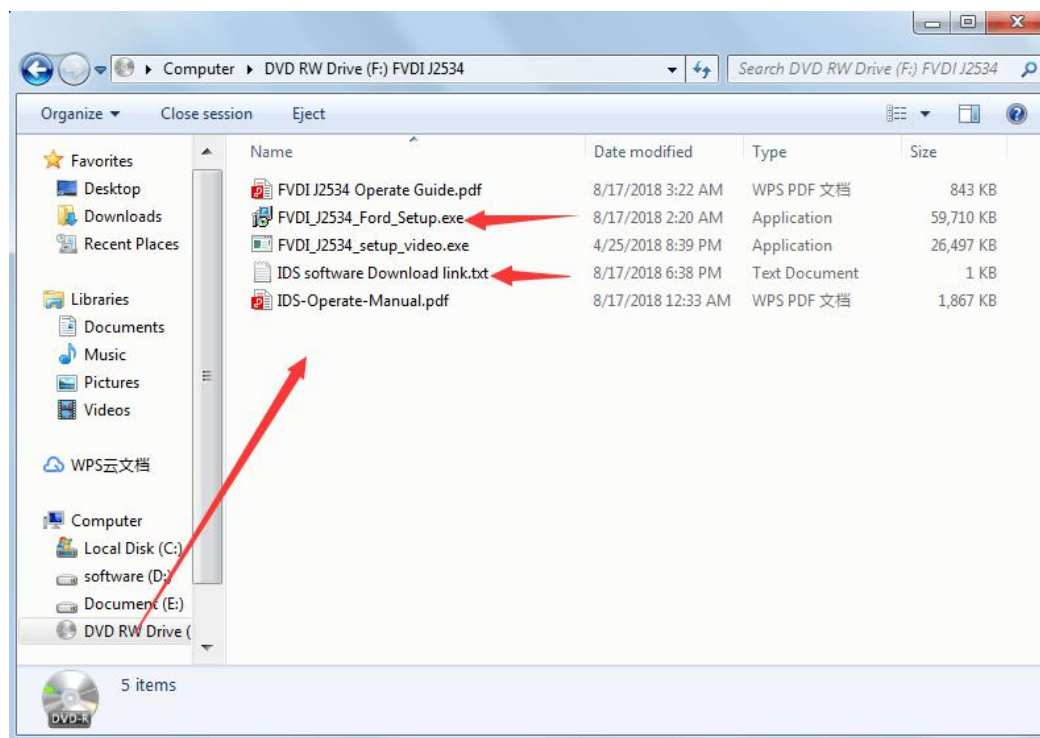
3.1 Get FVDI J2534 equipment software

You can get the FVDI J24534 software in two ways,First,you can find these softwares in the CD when you receive the FVDI J2534 equipment.,Second,you can download these softwares by yourself throught the download link(<http://flyobd.com/shop/download-center>) in our official website .

Note:The software in the download link is always up to date.

3.1.1 Get FVDI J2534 equipment software from compact disc(CD)

- Put the CD in the computer CD drive
- Wait a while before opening the CD in the resource manager,you will see the equipment related software and resources.



3.1.2 Get FVDI J2534 equipment software from official website download link

- Access to <http://flyobd.com/download-center/>
- Please register and log in
- Download FVDI-J2534-FM (FM,Short for Ford and Mazda)
- Download IDSFord or IDSMazda


Software	Version	Download Times	Update Time	Create time	Download	Details
Quickloader	v5.6	288	2018-8-1	2018-7-19	Download	Details
TM100	v7.12	253	2018-8-7	2018-7-9	Download	Details
FVDI-J2534-FM	v1.0	96	2018-8-17	2018-7-18	Download	Details
FVDI2015	v9.0	260	2018-8-1	2018-7-19	Download	Details
FVDI2018	v3.0	249	2018-8-1	2018-7-19	Download	Details
HDS	v3.102	50	2018-8-1	2018-7-19	Download	Details
Techstream	v13.00	47	2018-8-1	2018-7-19	Download	Details
VVDI2	v4.2.1	70	2018-8-1	2018-7-19	Download	Details
JLR-SDD	v153.0	49	2018-7-21	2018-7-19	Download	Details
Tango	v1.111	64	2018-8-1	2018-7-19	Download	Details
IDSFord	v110.xx	76	2018-7-21	2018-7-19	Download	Details
IDSMazda	V108	29	2018-8-1	2018-7-19	Download	Details
Nissan-C4	v09.21	23	2018-7-24	2018-7-19	Download	Details
Nissan-C3	v09.21	10	2018-7-24	2018-7-19	Download	Details
Nissan-C3-Plus	v75.20	30	2018-7-26	2018-7-19	Download	Details

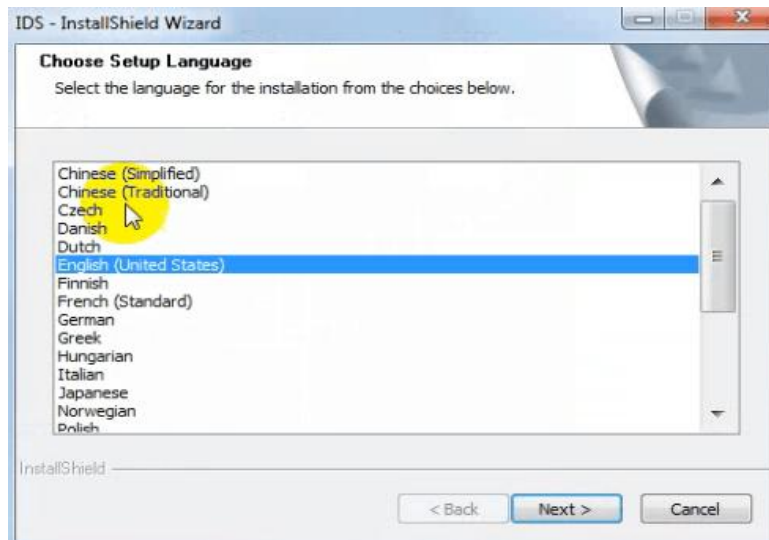
Download the latest release IDS software and save it to local.

Software Download Links		
Software	Latest Release	Use With
IDS Software	IDS 110 Update IDS 110.05	VCM, VCM II, or VCMM
Bosch Ford Product Group FPG (Firmware) VCI Manager	FPG v2.4.73.53 Included in R110	VCM II or VCMM
Vehicle Measurement System VMS	VMS v1.1.506.0	VCMM
Measurement Library (Firmware)	Measurement Library v0.67.127.181	VCMM
Ford Diagnosis and Repair System FDRS	FDRS 16.5.4 Not currently for use in Europe	VCM II, VCMM, or other J2534 Device

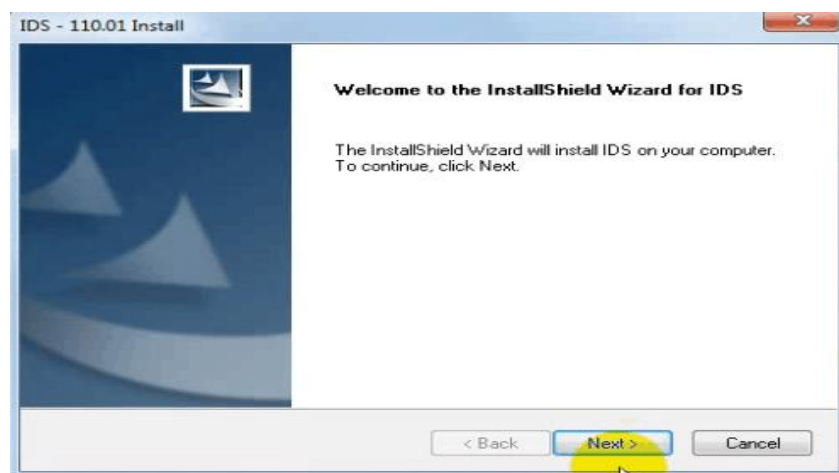
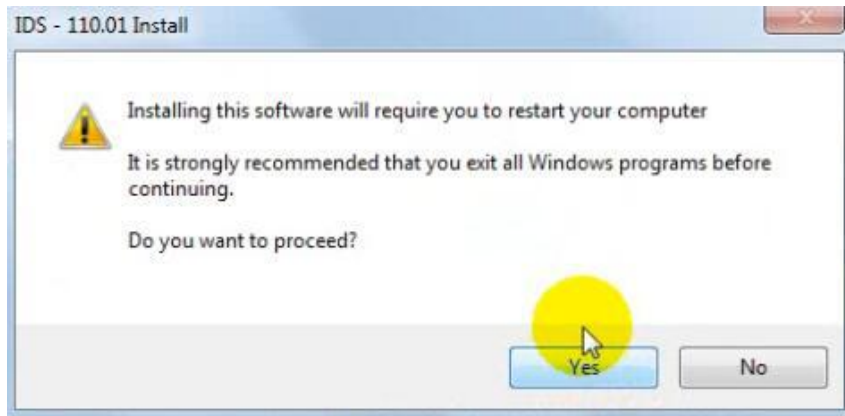
3.2 Install IDS and FVDI J2534 software

3.2.1: Install the latest release IDS software

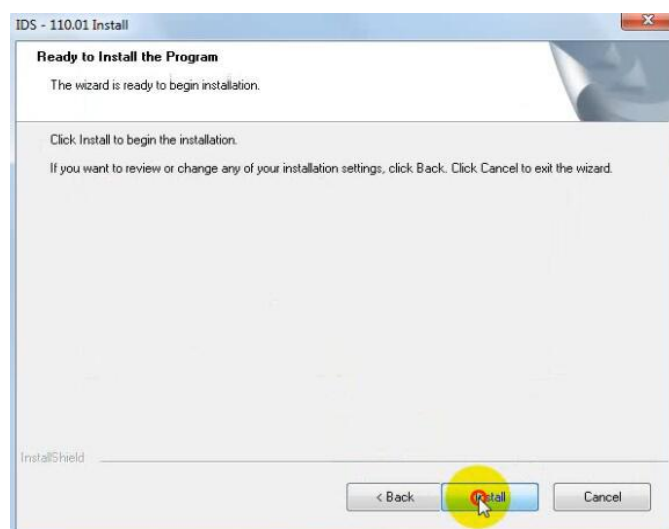
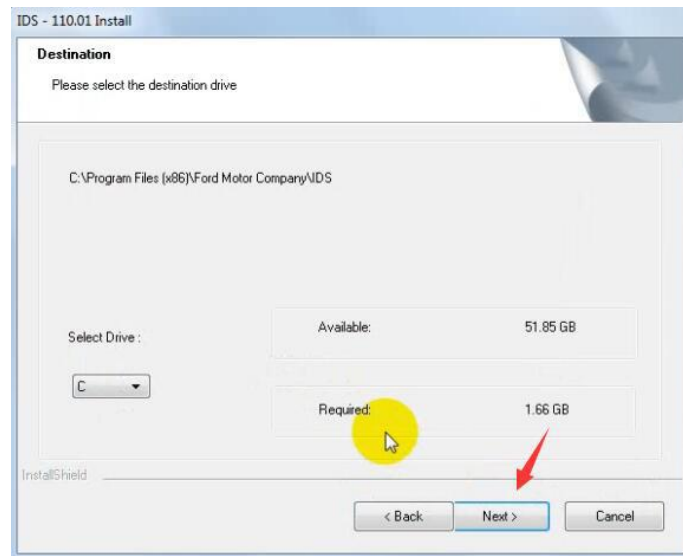
- Double-click the “IDS-110.01_Full.exe” to start installation  IDS-110.01_Full.exe
- Select language, and click “next” button



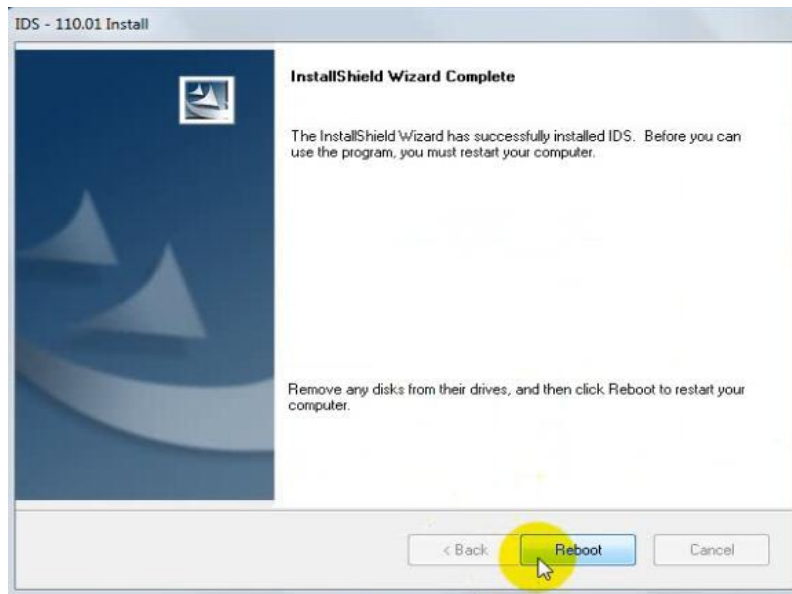
- Wait a while, and the following windows will pop out, click “Yes”, then click “next”



- Select “i accept the terms of the license agreement”, and then click “next”, and then click “next”, and then click “install”. The installation process will take some time, please wait patiently.

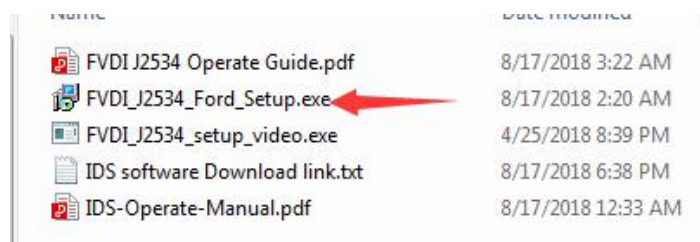


- Reboot your computer after installation



3.2.2 Install the FVDI J2534 software

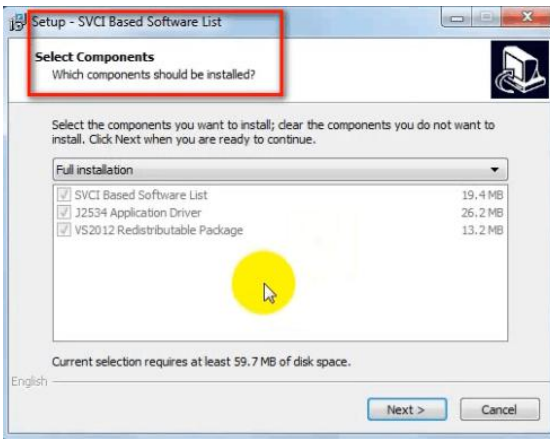
- Open compact Disc and find FVDI-J2534 software and double-click the “FVDI_J2534_Ford_Setup.exe” software



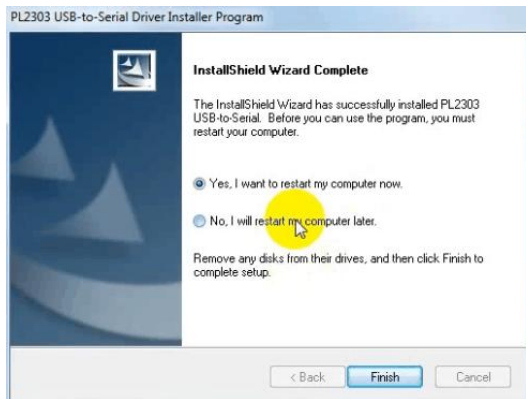
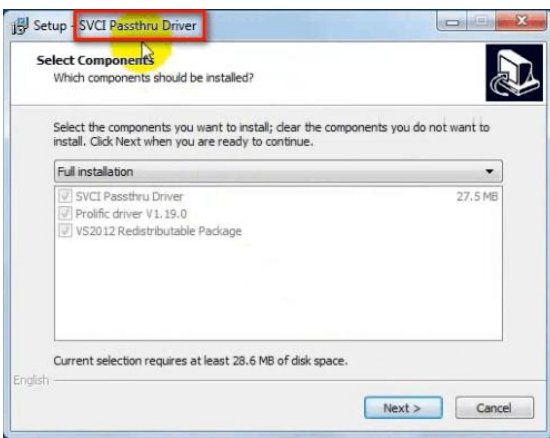
- Select Setup Language and Click “Ok”



- It will install SVCI Based software list, Click “next” directly, and then Click “next” all the time until it jump a window “Select Setup Language”, which is selected the device driver’s installation language.



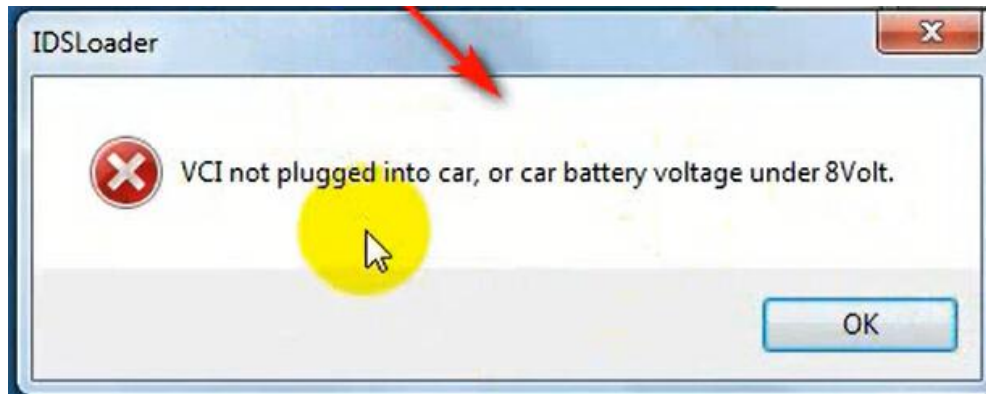
- Install the device driver, and click “Next” all the time until install Shield wizard complete, and then click “finish”.



- When you open FVDI J2534 for ford software after installation, an error window will pop out. That means you have not connect FVDI J2534 equipment with your computer, as show in the below. connect your device with computer, and the FVDI J2534 software will be opened normally.



- when you put FVDI J2534 equipment to connect the computer and open the software, it will pop below error message, it means you do not connected vehicle ECU module and the ECU voltage can not less than 8 volts. After using the OBD interface of FVDI J2534 to connect the ECU, and the software can be opened normally and put into use.



Note: Cannot open the IDS software on the desktop directly, it is recommended to delete the IDS software shortcut on the desktop.

IV IDS Operate Manual

If you are a novice or do not understand the operation of ford software, you can refer to the IDS operation manual, which contains a very detailed introduction and operation steps, which is applicable to not only ford software, but also Mazda software.

IDS operation manual:

<http://flyobd.com/document/IDS-Operate-Manual.pdf>