

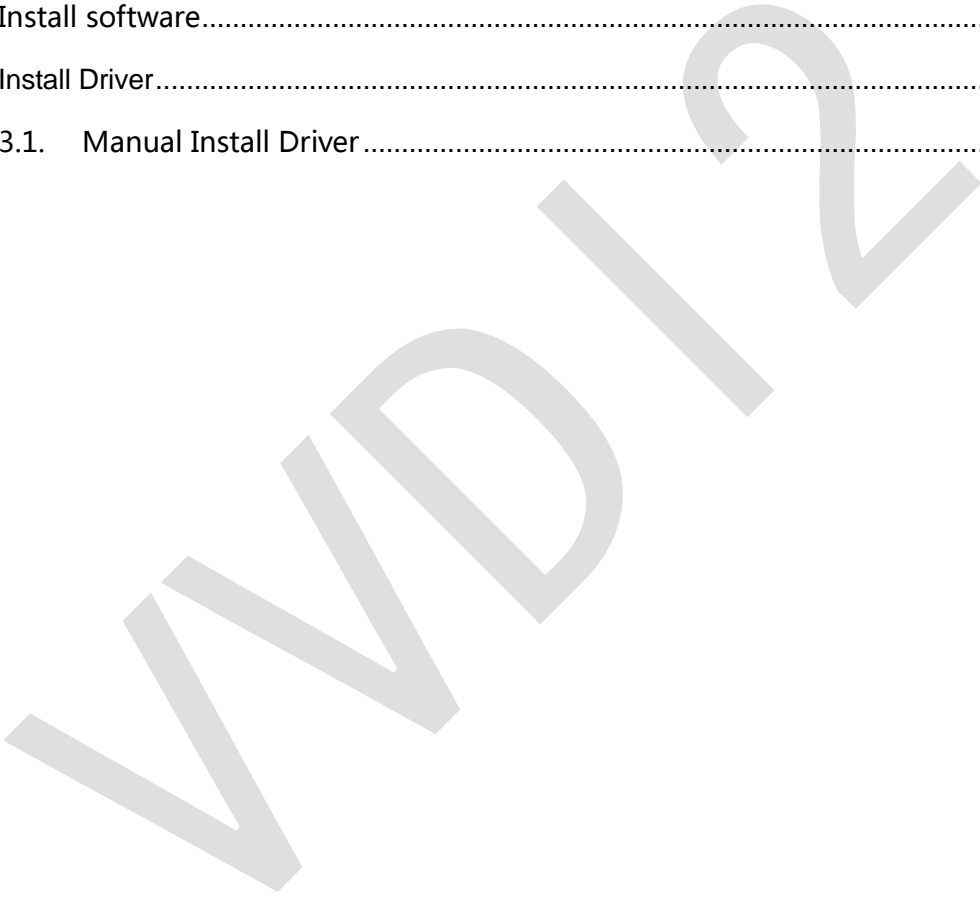
---

# VVDI2 – Install Software and Driver

VVDI

# Table of Contents

- 1. Document Declaration.....3
- 2. Install software.....4
- 3. Install Driver.....8
  - 3.1. Manual Install Driver .....8



# 1.Document Declaration

Please view the following declaration carefully:

- ◆ VVDI2 – Install Software and Driver can help you install software and VVDI2 driver.  
**Please DON'T used for illegal purpose, Please follow the national law**
- ◆ VVDI2 – Install Software and Driver is written by VVDI2, **please DON'T used for commercial purposes without authorize**
- ◆ Install driver and set latency timer is very important, please view carefully
- ◆ **Any illegal use VVDI2 – Install Software and Driver, illegal use VVDI2 device, The user should take all risks, the company does not assume any responsibility**

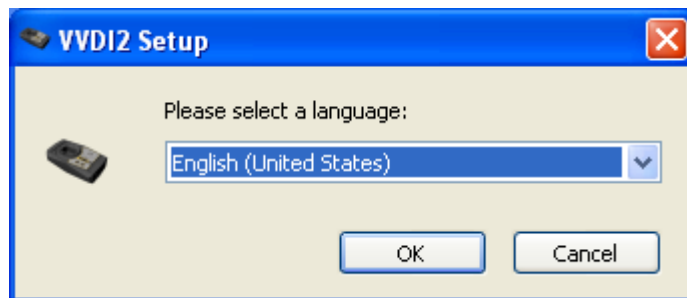
VVDI2

## 2. Install software

Install software is very easy, just follow the window. Show with window steps:



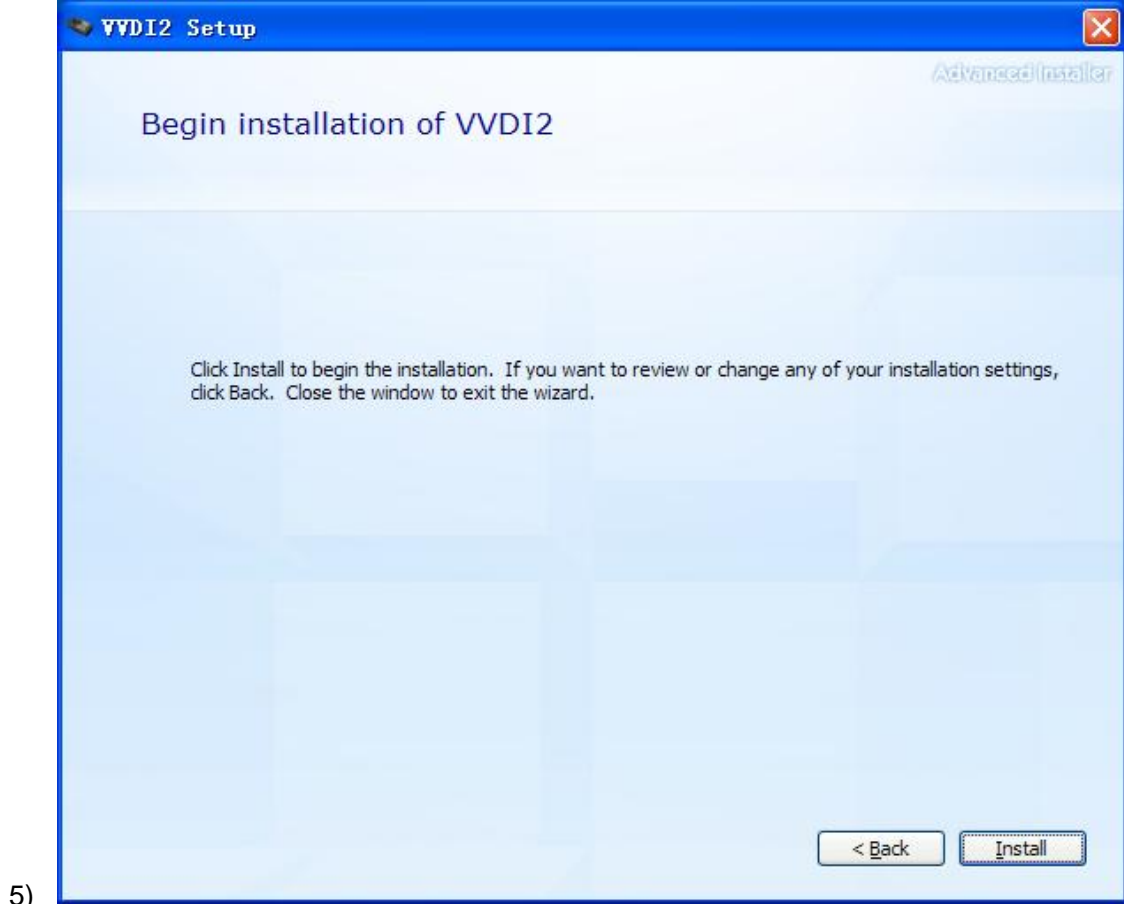
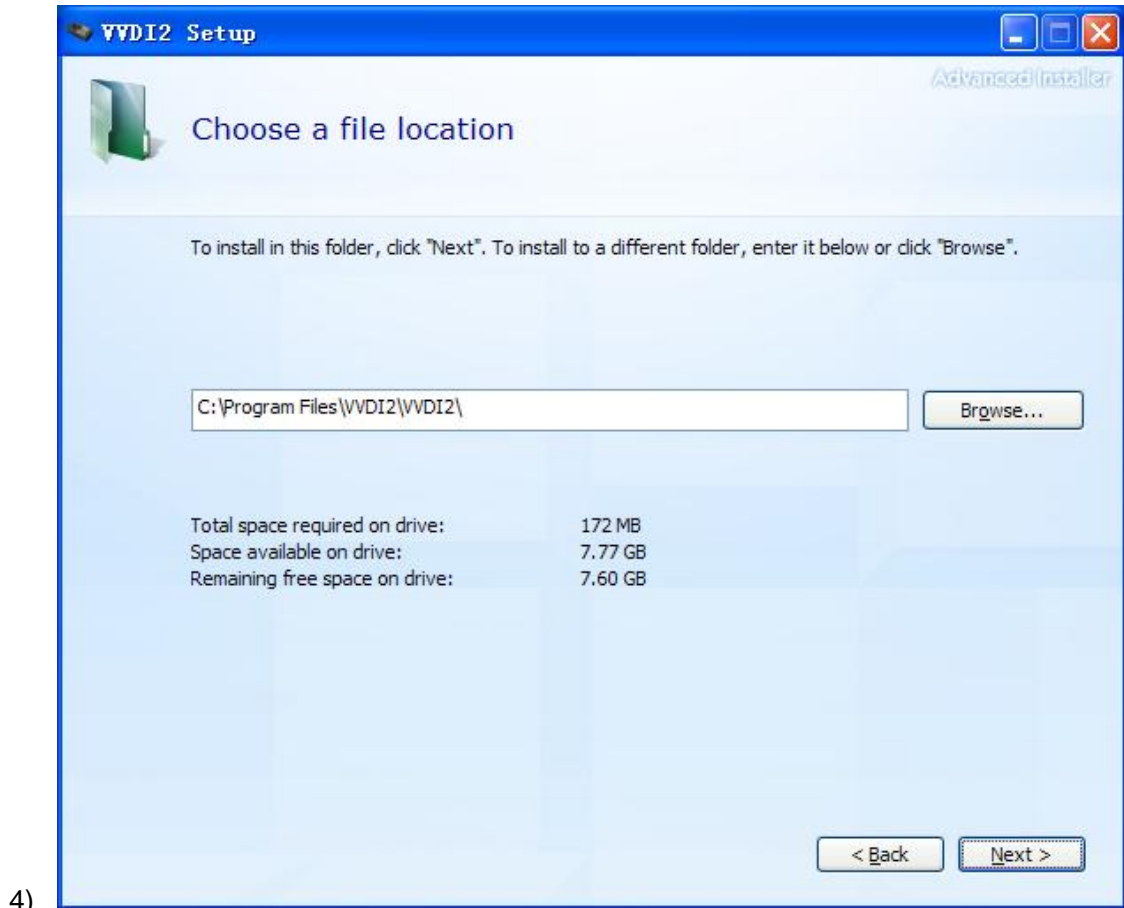
- 1) Double click install programs: `VVDI2-Installer.exe`

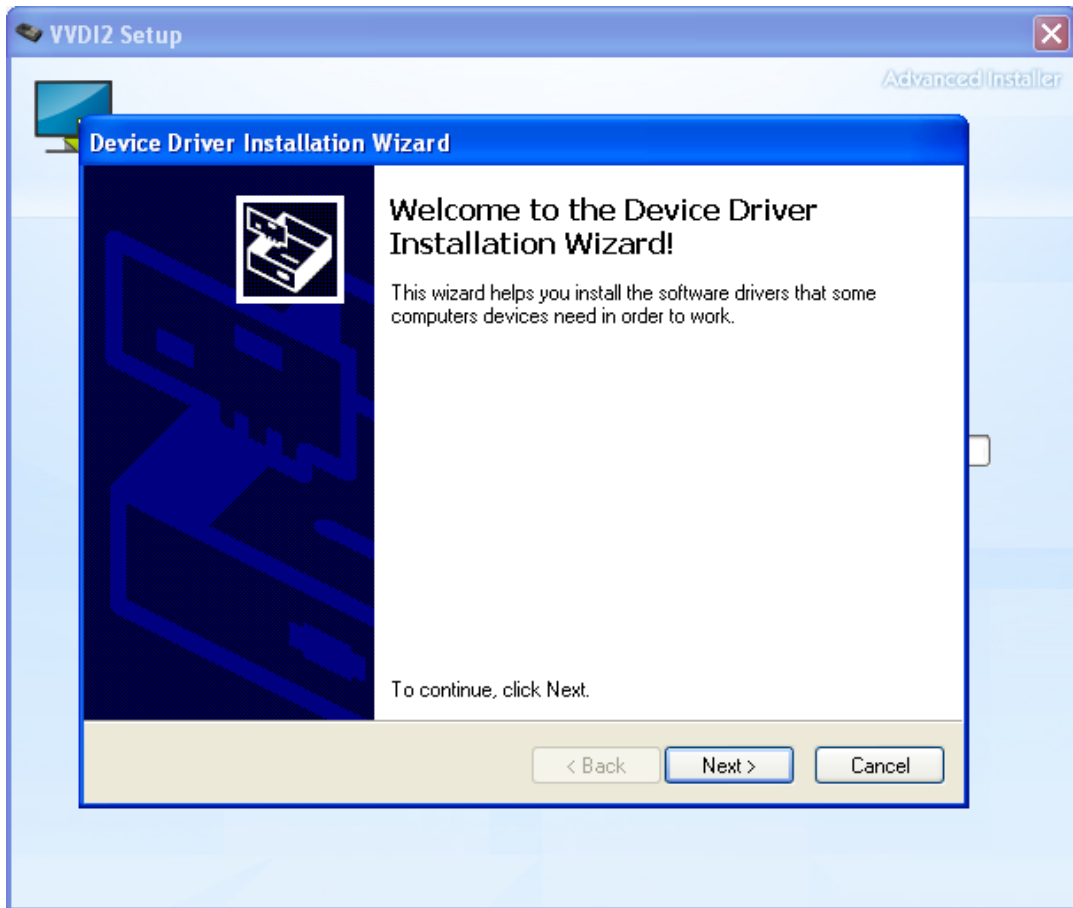


- 2) Choose install language:

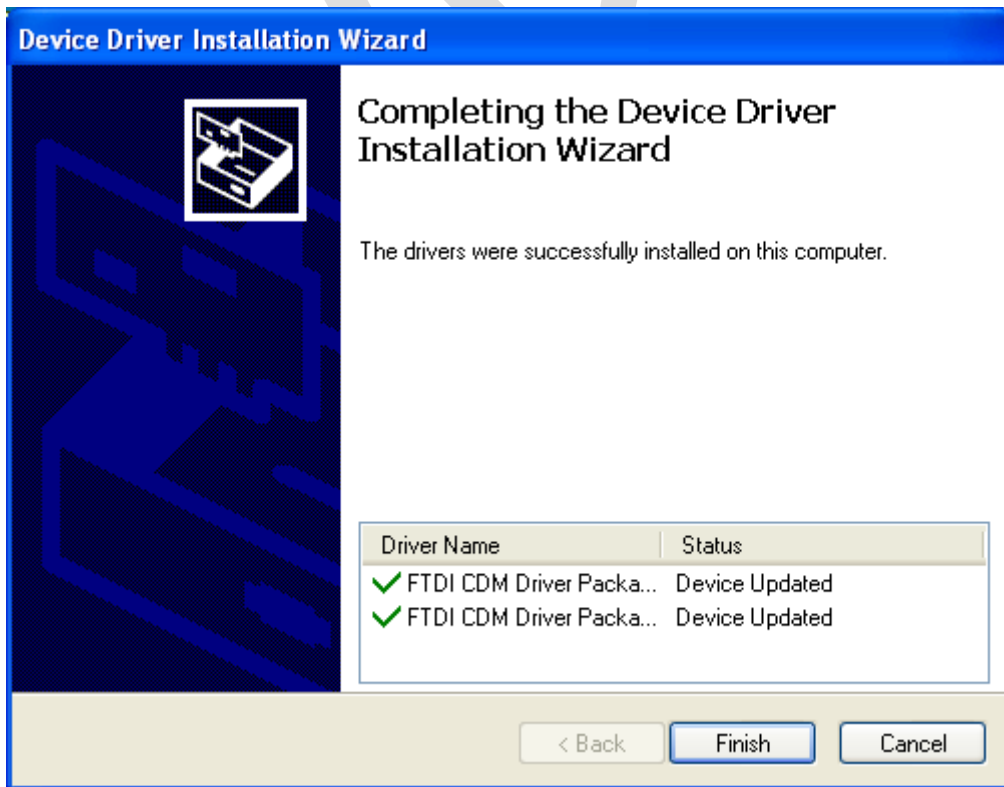


- 3)

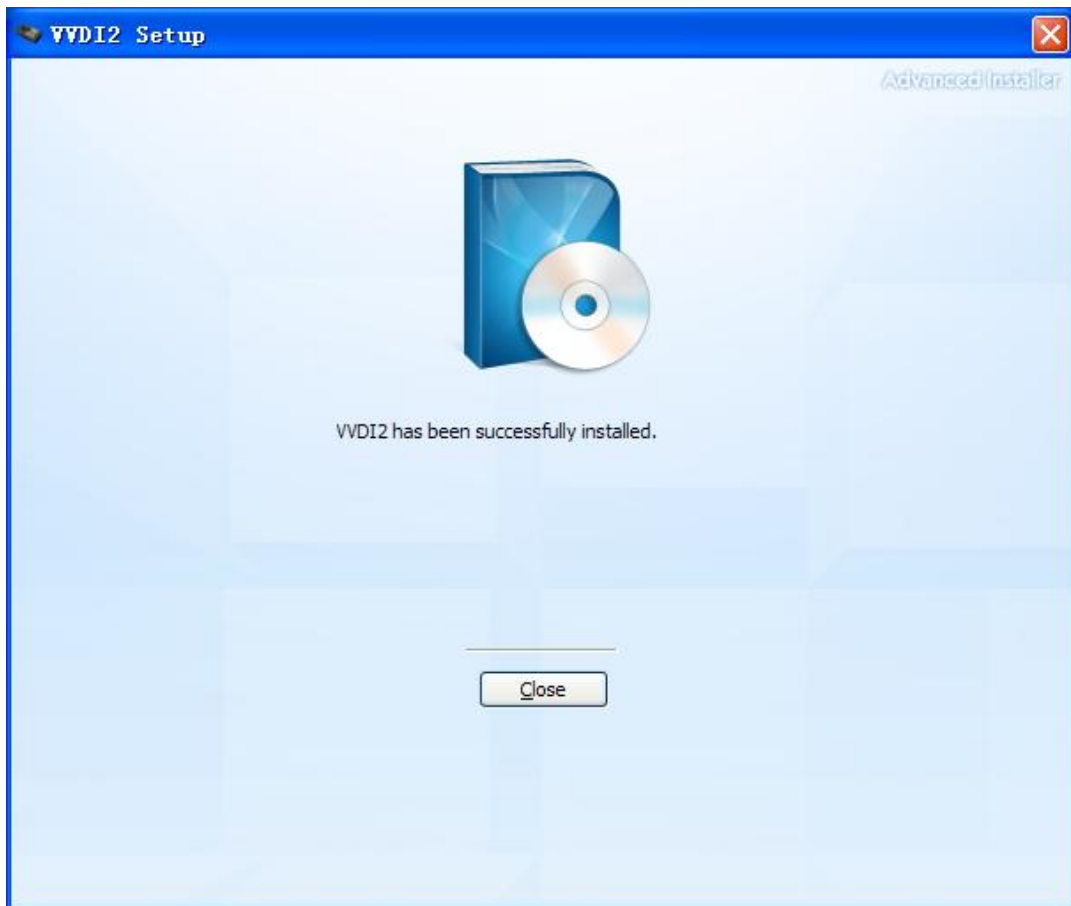




- 6)  
 Attention: If you are install VVDI2 software (any version) for first time, you need choose NEXT, else you can choose CANCEL



- 7)



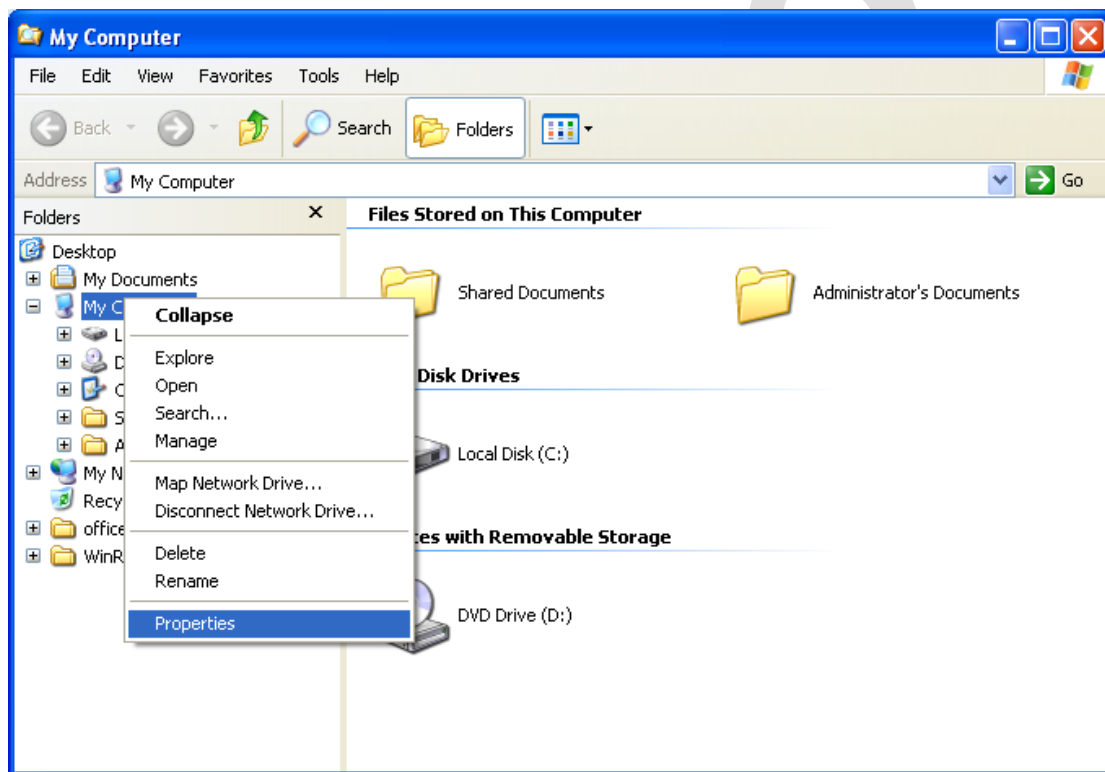
- 8)  
Install complete. There will be a quick start on your desktop

## 3. Install Driver

- ◆ Generally, VVDI2 driver can install automatically with install software.
- ◆ If install driver failed or your programs can not connect to VVDI2, you need manual install driver accord chapter 3.1

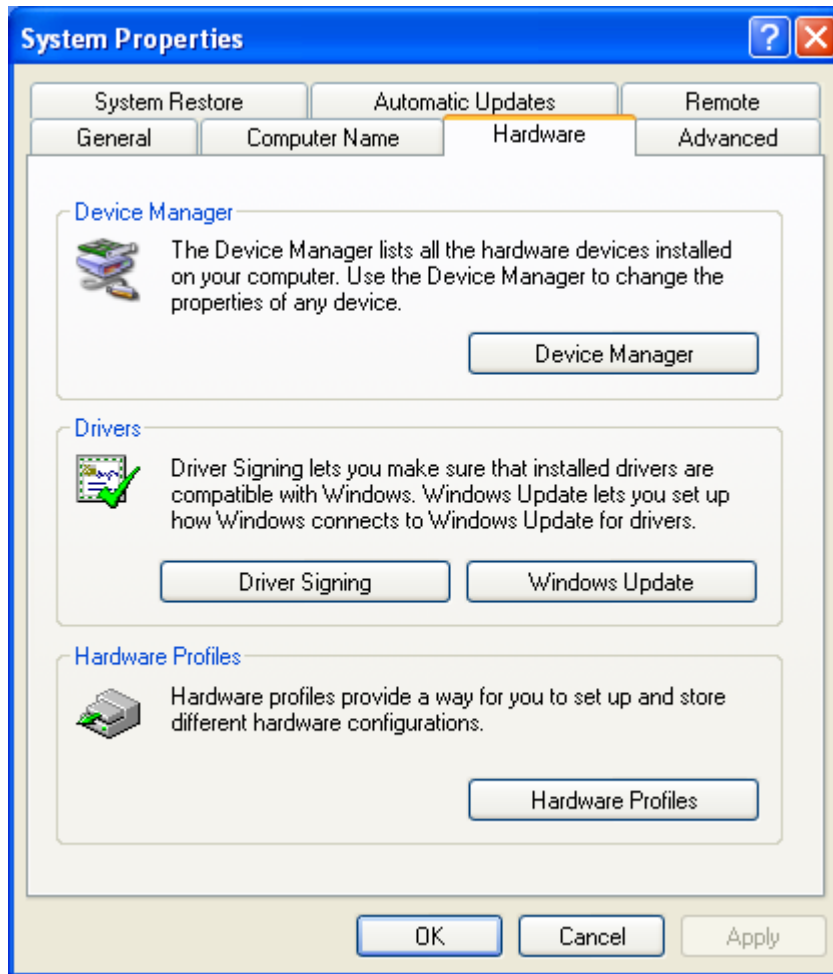
### 3.1. Manual Install Driver

- ◆ **Open Device Manager:** Open windows explorer, right click “My computer” and select “Properties” [\(PICTURE 3. 1\)](#), open “System properties” [\(PICTURE 3. 2\)](#), select “Hardware” -> “Device Manager”, Open Device Manager [\(PICTURE 3. 3\)](#)

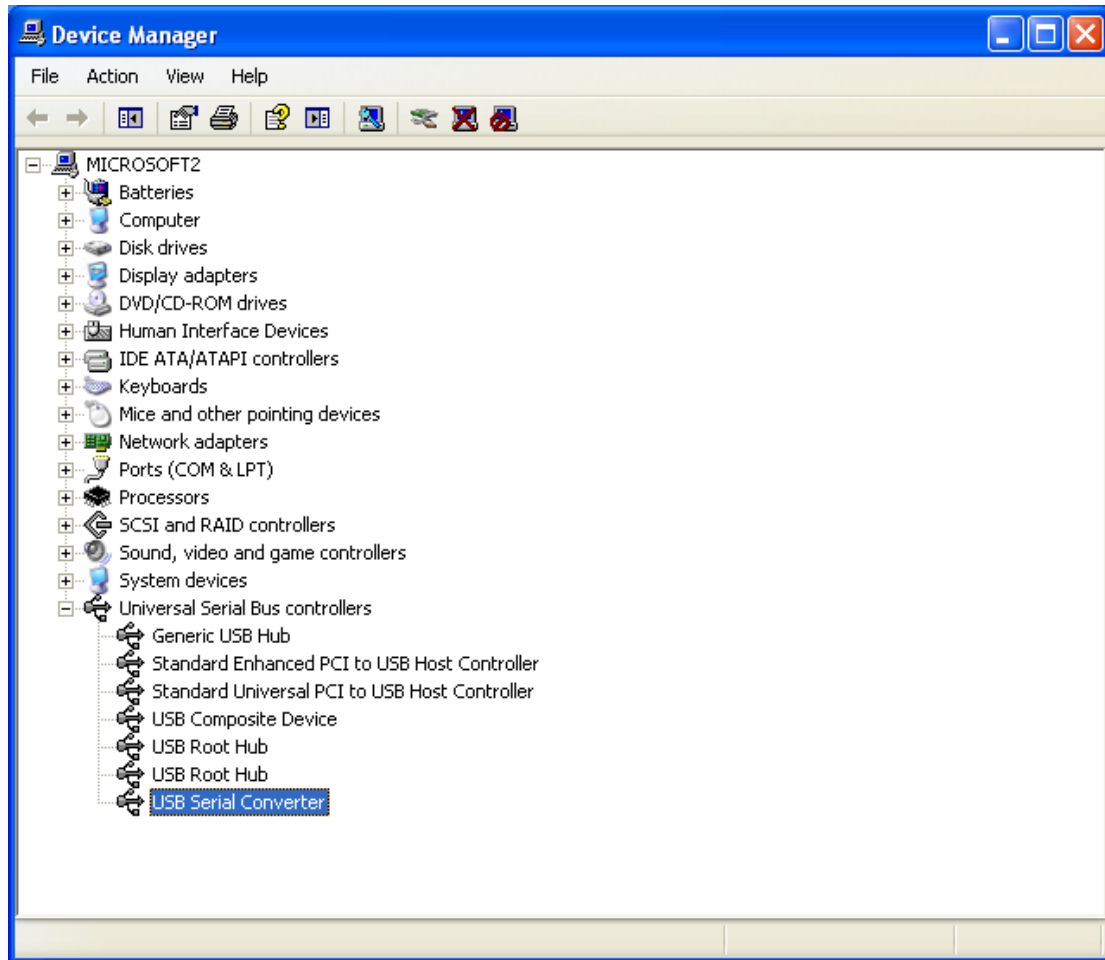


[\(PICTURE 3. 1\)](#)





(PICTURE 3.2)



(PICTURE 3.3)

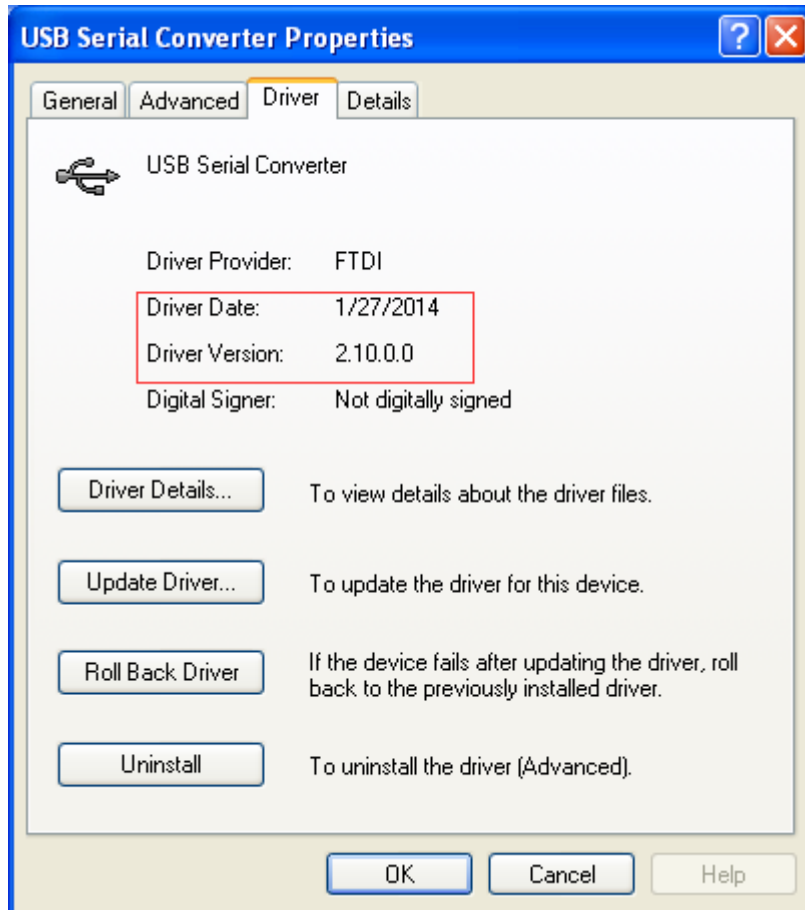
- ◆ **Install bus driver:** Disconnect other USB cable from PC(Mouse and keyboard should keep connect)

- **VVDI2 install with other version drivers:** In [\(PICTURE 3.3\)](#) select “**Universal Serial Bus controllers**” -> “**USB Serial Converter**”, double click on it, get properties window [\(PICTURE 3.4\)](#)

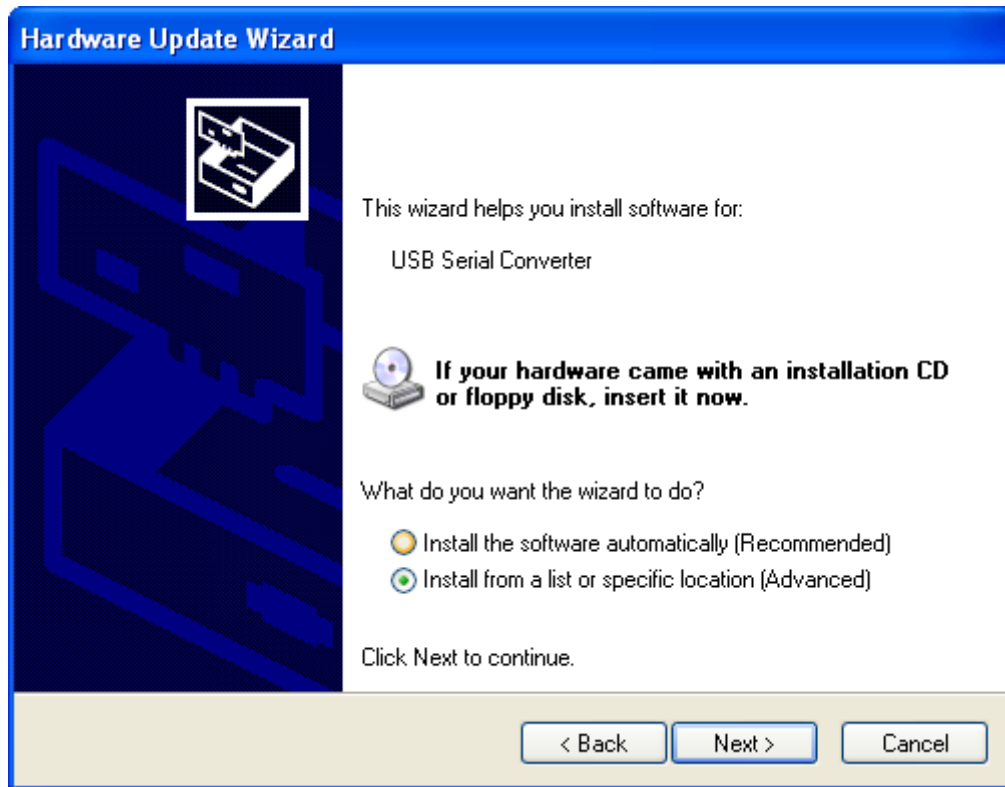
View “**Driver**” page: “**Driver Date**” should be: **3/18/2011**, “**Driver Version**” should be: **2.8.14.0** [\(PICTURE 3.11\)](#). If all right, don't install driver again. If not shown as before, you need install driver with following steps:

- 1) In [\(PICTURE 3.4\)](#), select “**Driver**” -> “**Update Driver**”. Open “**Hardware Update Wizard**” [\(PICTURE 3.5\)](#)
- 2) In [\(PICTURE 3.5\)](#), select “**Install from a list or specific location (Advanced)**”, next to get window [\(PICTURE 3.6\)](#)
- 3) In [\(PICTURE 3.6\)](#), select “**Don't search. I will choose the driver to install.**” next to get window [\(PICTURE 3.7\)](#). Sometimes you will get [\(PICTURE 3.8\)](#) directly, at this situation, go to step 5)
- 4) In [\(PICTURE 3.7\)](#), select “**Universal Serial Bus controllers**”, next to get window [\(PICTURE 3.8\)](#)

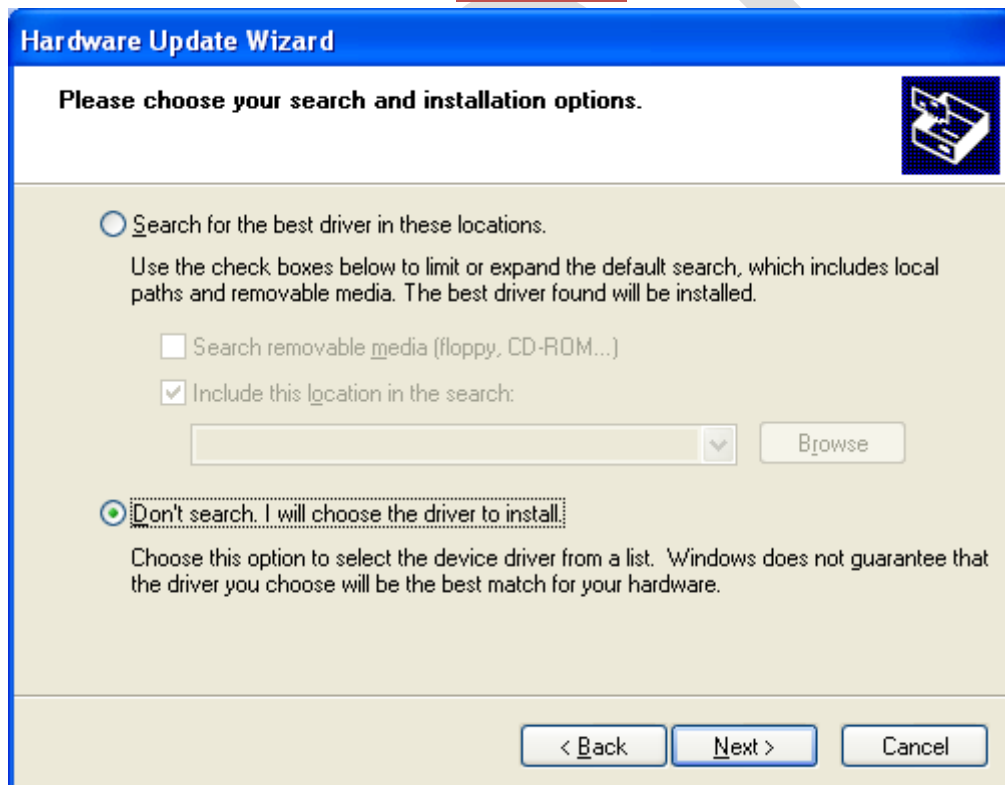
- 5) In [\(PICTURE 3.8\)](#), select “**Have Disk...**”, get install from disk window [\(PICTURE 3.9\)](#)
- 6) In [\(PICTURE 3.9\)](#), input absolute path for USB Driver folder in install directory (Browse... and choose install directory, or you can find the path from Start->Programs->VVDI2->USB Drivers). Press **OK** and wait complete. Sometimes system will ask again for Are you sure to install this driver? Continue is need



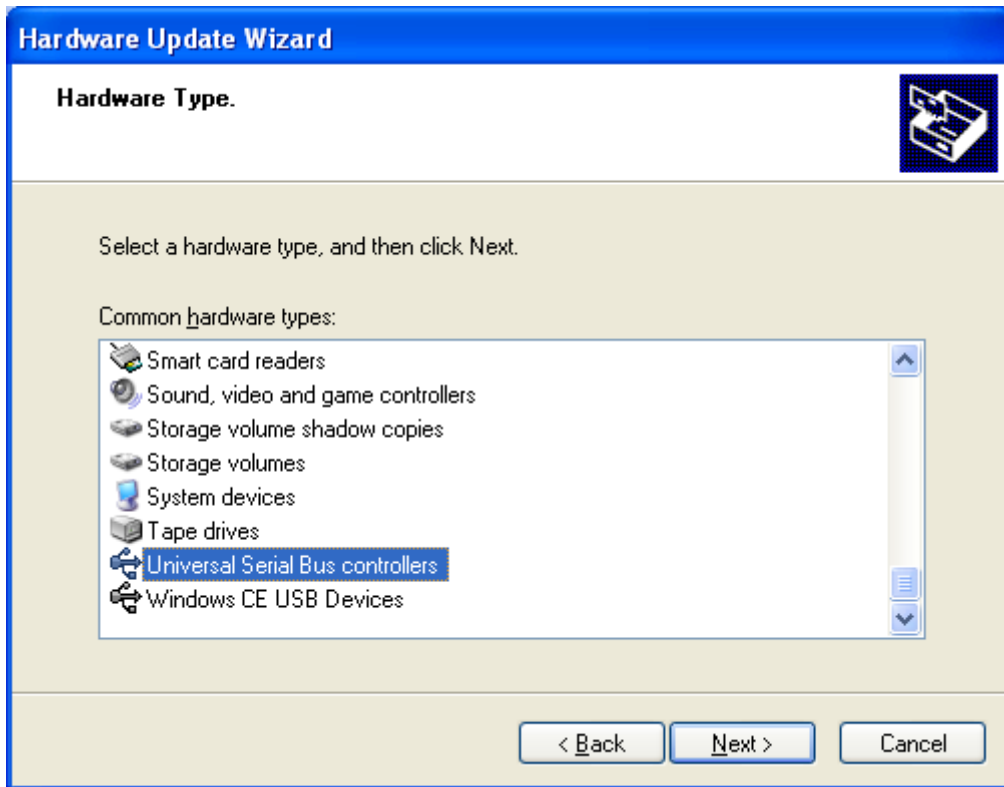
[\(PICTURE 3.4\)](#)



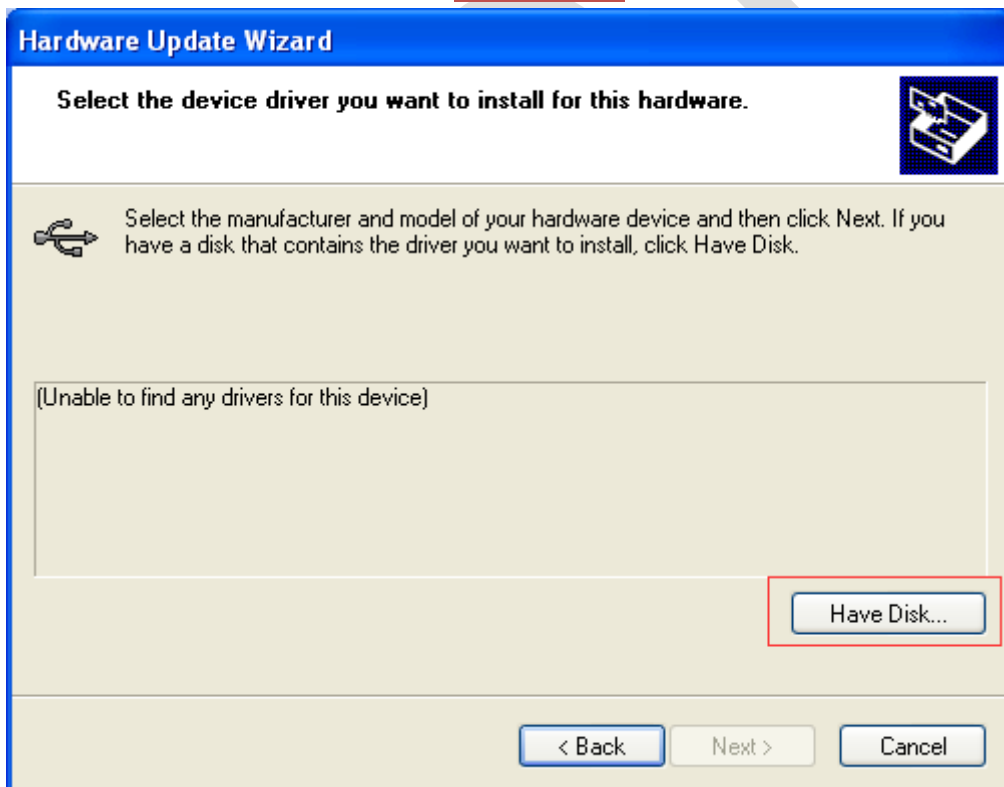
(PICTURE 3. 5)



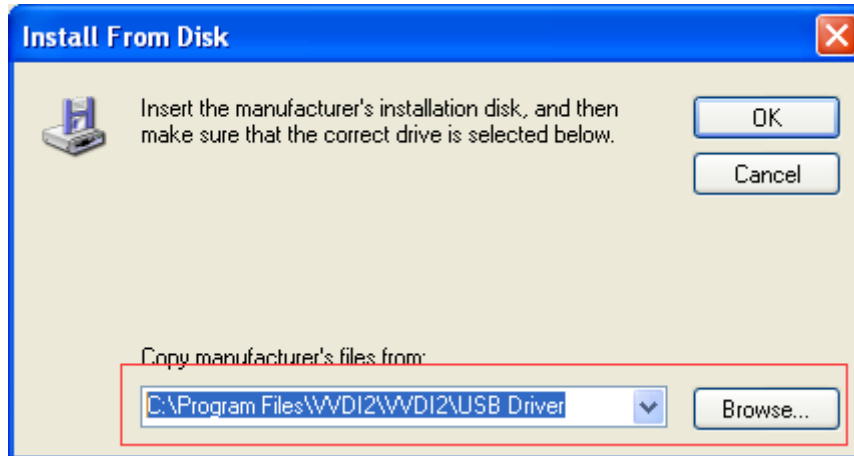
(PICTURE 3. 6)



(PICTURE 3. 7)

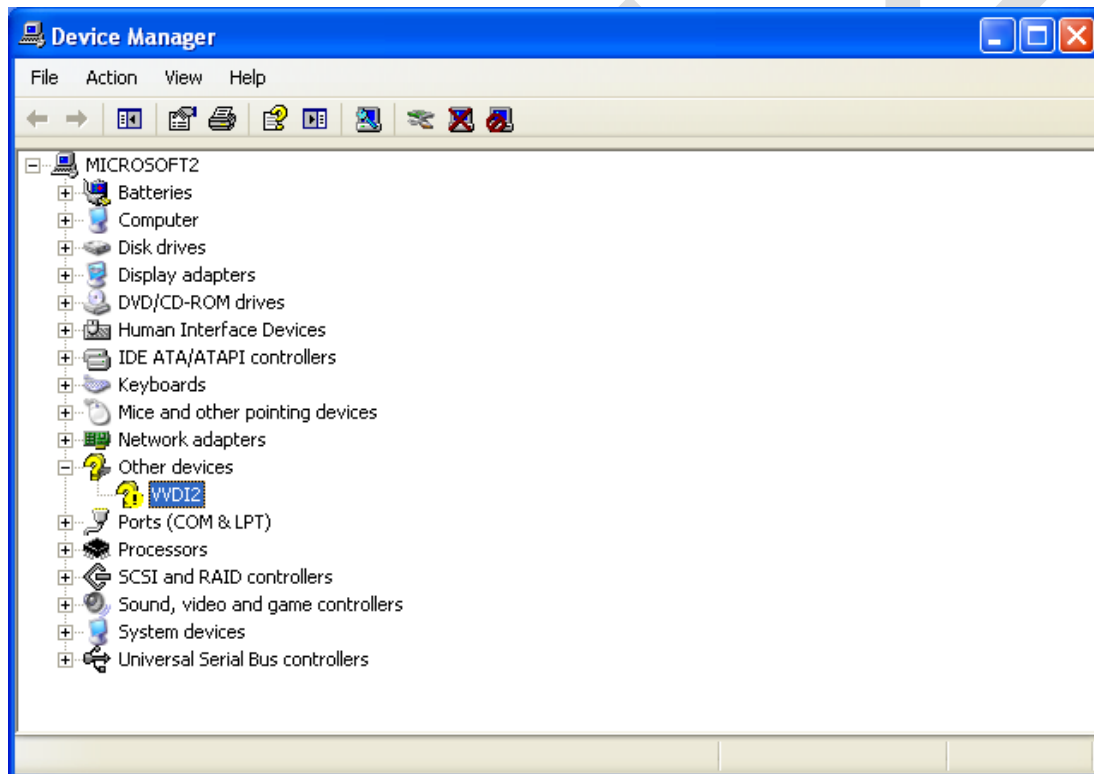


(PICTURE 3. 8)



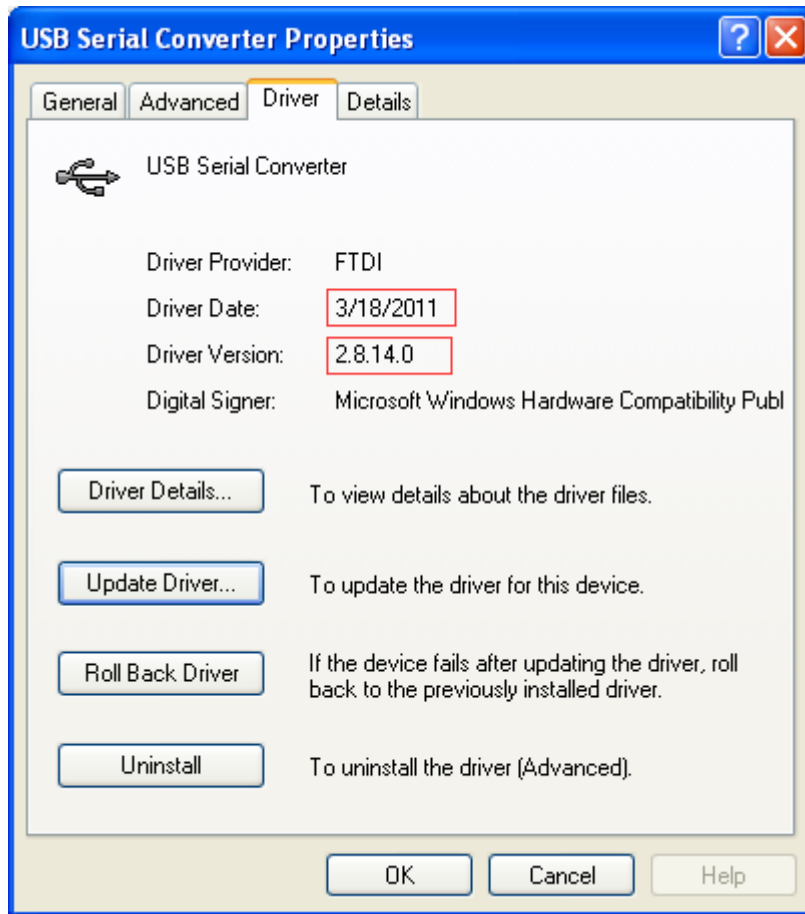
(PICTURE 3.9)

- **VVDI2 is not recognized:** you can find VVDI2(with yellow !) in “Other devices” list from device manager (PICTURE 3.10), double click get properties window. Then install driver accord **VVDI2 install with other version drivers**



(PICTURE 3.10)

- ◆ **Verify Bus Driver:** Open properties window after install driver, view Driver page: “**Driver Date**” should be: **3/18/2011**, “**Driver Version**” should be: **2.8.14.0**([PICTURE 3.11](#))



([PICTURE 3.11](#))